

**LIGHTING FIXTURE SCHEDULE**

TYPE	MANUFACTURER & MODEL NO.	DESCRIPTION	LAMPS	WATTS	LUMENS	VOLTS	REMARKS
A	JUNO JSF-5IN07LM-30K-90CRI-MVO LIZT-WH	5" RECESSED	LED	10	700	120/277	0-10V DIMMING, MOUNT TO UNDERSIDE OF CANOPY, PROVIDE MOTION CONTROL UNDER NORTH CANOPY
B	COOPER LIGHTING 9002-W1-RW-LED3090-W-BK	EXTERIOR WALL SCONCE	LED	10	726	120/277	BUILDING MOUNTED FIXTURE REFER TO MOUNTING HEIGHT ON PLAN
B1	COOPER LIGHTING 9003-W1-RW-LED3090-W-BK	EXTERIOR WALL SCONCE	LED	20	1358	120/277	BUILDING MOUNTED FIXTURE REFER TO MOUNTING HEIGHT ON PLAN
SA	LITHONIA DSXO-LED-P1-30K-BLC-MVOLT-SPA	POLE LIGHT	LED	38	3586	120/277	PROVIDE 11' POLE LITHONIA# SSS-10-4C-DM19AS-DBLXD, ON 2' BASE, MOUNTING HEIGHT OF 13' AFG.
SA	LITHONIA DSXO-LED-P1-30K-T3S-MVOLT-SPA-HS	POLE LIGHT	LED	38	3586	120/277	PROVIDE 11' POLE LITHONIA# SSS-10-4C-DM19AS-DBLXD, ON 2' BASE, MOUNTING HEIGHT OF 13' AFG.
SB	COOPER LIGHTING BRT6-A1-730-U-T3-30-BK	BOLLARD	LED	5.4	489	120/277	
WP	LITHONIA WDGE2-LED-P1-30K-80CRI-VW-MVOLT	WALL PACK	LED	10	1122	120/277	WALL PACK TO BE MOUNTED AT 8' AFG. WALL PACK TO DIM TO 0% WHEN UNOCCUPIED, 50% WHEN MOTION IS DETECTED

**SITE PHOTOMETRIC PLAN**

SCALE: 1/8" = 1'-0"



LIGHTING ISOLINES LEGEND	
COLOR	FOOTCANDLES
RED	1.0
BLUE	0.5
GREEN	0.1

LIGHTING LEVELS TABLE				
Description	Symbol	Avg	Max	Min
PARKING AREA	+	1.80 fc	19.2 fc	0.1 fc

PERMIT REVIEW SET 09/08/21

278 MAIN STREET



DATE: 09.08.2021  
DRAWN BY: CDJ



### D-Series Size 0 LED Area Luminaire

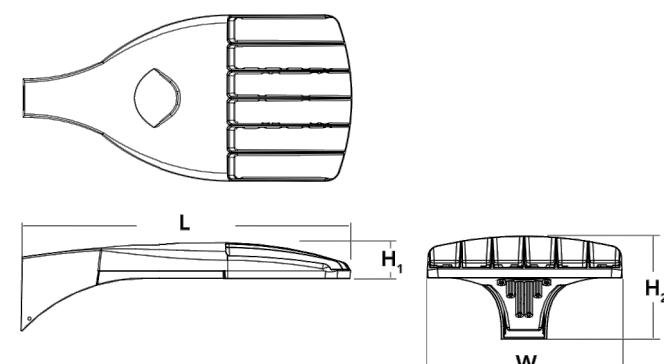


Crating number: \_\_\_\_\_  
 Pole: \_\_\_\_\_  
 Pole SA: \_\_\_\_\_

For the full buy or review visit the page to see all interactive elements.

#### Specifications

EPA: 0.95 ft<sup>2</sup> (0.09 m<sup>2</sup>)  
 Length: 26" (660 mm)  
 Width: 13" (330 mm)  
 Height: 3" (76 mm)  
 Height: 7" (178 mm)  
 Weight: 16 lbs (7.2 kg)  
 Weight (max): \_\_\_\_\_



#### Introduction

The modern styling of the D-Series is striking yet unobtrusive - making a bold, progressive statement even as it blends seamlessly with its environment. The D-Series distills the benefits of the latest in LED technology into a high performance, high efficacy, long-life luminaire. The outstanding photometric performance results in sites with excellent uniformity, greater pole spacing and lower power density. It is ideal for replacing up to 400W metal halide with typical energy savings of 70% and expected service life of over 100,000 hours.

#### Ordering Information

EXAMPLE: DSX0 LED P6 40K T3M MVOLT SPA NLTAIR2 PIRHN DBBXD

Series	LEDs	Color Temperature	Distribution	Voltage	Mounting	
DSX0 LED	Forward optics	30K	3000K	T15	Type I short (Automotive)	
		40K	4000K	T25	Type II short	
		50K	5000K	T3M	Type II medium	
		50K	5000K	T3S	Type III short	
Rotated optics	P1*	P5	40K	4000K	T25	Type II short
		P6	50K	5000K	T3M	Type II medium
		P7*	50K	5000K	T3S	Type III short
		P4*	50K	5000K	T3M	Type III medium
Rotated optics	P10*	P12*	50K	5000K	T3M	Type III medium
		P13*	50K	5000K	T3S	Type III short
		P11*	50K	5000K	T3M	Type III medium
		P13*	50K	5000K	T3S	Type III short

Control options	Other options	Finish
<b>Shipped installed</b> NTAIR2 High light All generation 2 enabled <sup>1,2</sup> PIRHN Network, high low motion/ambient sensor <sup>3</sup> PER NEMA two-lock receptacle only (control ordered separately) <sup>3</sup> PER5 Five-pin receptacle only (control ordered separately) <sup>3,4,5</sup> PER7 Seven-pin receptacle only (leads exit fixture) (control ordered separately) <sup>3,4,5</sup> DMG 0-10V dimming extend out back of housing for external control (control ordered separately) <sup>3</sup>	PIR High/low motion/ambient sensor, 8-15' mounting height, ambient sensor enabled at 16" <sup>6,8</sup> PIRH High/low motion/ambient sensor, 15-30' mounting height, ambient sensor enabled at 16" <sup>6,8</sup> PIRHFCV High/low motion/ambient sensor, 8-15' mounting height, ambient sensor enabled at 16" <sup>6,8</sup> PIRHFCV High/low motion/ambient sensor, 15-30' mounting height, ambient sensor enabled at 16" <sup>6,8</sup> FAO field adjustable output <sup>2</sup>	DBRBD Dark bronze DBLXD Black DNAXD Natural aluminum DWDKD White DBRBD Textured dark bronze DBLXD Textured black DNAXD Textured natural aluminum DWDKD Textured white <b>Shipped separately</b> BS Bird spikes <sup>9</sup> EGS External glare shield



### D-Series Size 0 LED Area Luminaire

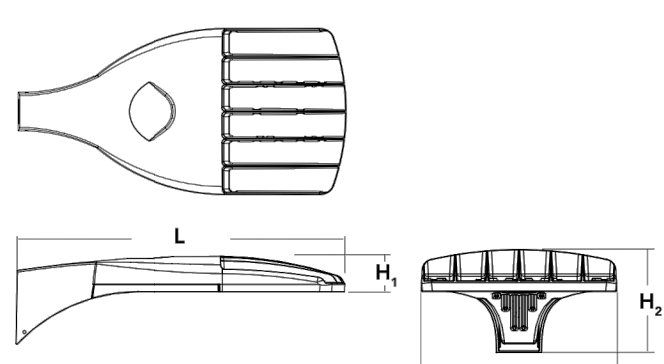


Crating number: \_\_\_\_\_  
 Pole: \_\_\_\_\_  
 Pole SA1: \_\_\_\_\_

For the full buy or review visit the page to see all interactive elements.

#### Specifications

EPA: 0.95 ft<sup>2</sup> (0.09 m<sup>2</sup>)  
 Length: 26" (660 mm)  
 Width: 13" (330 mm)  
 Height: 3" (76 mm)  
 Height: 7" (178 mm)  
 Weight: 16 lbs (7.2 kg)  
 Weight (max): \_\_\_\_\_



The modern styling of the D-Series is striking yet unobtrusive - making a bold, progressive statement even as it blends seamlessly with its environment. The D-Series distills the benefits of the latest in LED technology into a high performance, high efficacy, long-life luminaire. The outstanding photometric performance results in sites with excellent uniformity, greater pole spacing and lower power density. It is ideal for replacing up to 400W metal halide with typical energy savings of 70% and expected service life of over 100,000 hours.

#### Ordering Information

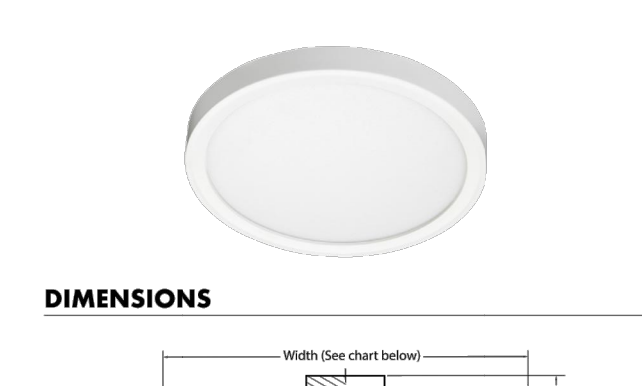
EXAMPLE: DSX0 LED P6 40K T3M MVOLT SPA NLTAIR2 PIRHN DBBXD

Series	LEDs	Color Temperature	Distribution	Voltage	Mounting	
DSX0 LED	Forward optics	30K	3000K	T15	Type I short (Automotive)	
		40K	4000K	T25	Type II short	
		50K	5000K	T3M	Type II medium	
		50K	5000K	T3S	Type III short	
Rotated optics	P1*	P5	40K	4000K	T25	Type II short
		P6	50K	5000K	T3M	Type II medium
		P7*	50K	5000K	T3S	Type III short
		P4*	50K	5000K	T3M	Type III medium
Rotated optics	P10*	P12*	50K	5000K	T3M	Type III medium
		P13*	50K	5000K	T3S	Type III short
		P11*	50K	5000K	T3M	Type III medium
		P13*	50K	5000K	T3S	Type III short

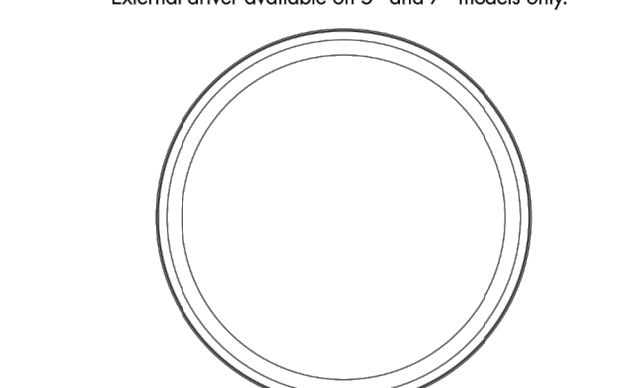
Control options	Other options	Finish
<b>Shipped installed</b> NTAIR2 High light All generation 2 enabled <sup>1,2</sup> PIRHN Network, high low motion/ambient sensor <sup>3</sup> PER NEMA two-lock receptacle only (control ordered separately) <sup>3</sup> PER5 Five-pin receptacle only (control ordered separately) <sup>3,4,5</sup> PER7 Seven-pin receptacle only (leads exit fixture) (control ordered separately) <sup>3,4,5</sup> DMG 0-10V dimming extend out back of housing for external control (control ordered separately) <sup>3</sup>	PIR High/low motion/ambient sensor, 8-15' mounting height, ambient sensor enabled at 16" <sup>6,8</sup> PIRH High/low motion/ambient sensor, 15-30' mounting height, ambient sensor enabled at 16" <sup>6,8</sup> PIRHFCV High/low motion/ambient sensor, 8-15' mounting height, ambient sensor enabled at 16" <sup>6,8</sup> PIRHFCV High/low motion/ambient sensor, 15-30' mounting height, ambient sensor enabled at 16" <sup>6,8</sup> FAO field adjustable output <sup>2</sup>	DBRBD Dark bronze DBLXD Black DNAXD Natural aluminum DWDKD White DBRBD Textured dark bronze DBLXD Textured black DNAXD Textured natural aluminum DWDKD Textured white <b>Shipped separately</b> BS Bird spikes <sup>9</sup> EGS External glare shield



**PRODUCT DESCRIPTION**  
 Slim, ultra-low profile energy efficient LED surface mount downlights in multiple sizes from 5" to 13" • Provides economical installation by mounting directly over standard and fire-rated junction boxes • Optional finish trim and shrouds available for custom, designer look similar to standard recessed downlights • Provides general illumination in residential and commercial applications including multi-family and hospitality • Ideal for use in corridors, living spaces, closets, hallways, pantries, stairways, outdoor covered areas without Emergency Option and much more.  
**PRODUCT SPECIFICATIONS**  
**Construction** Shallow, less than 1", solid ring with white finish • Non conductive fixture for shower/light applications • Optional, field installable finish trim available for 5" and 7" versions to change the exterior finish of fixture • Optional, field installable decorative baffle and cone shrouds for 5" and 7" versions provide the aesthetic and source shielding similar to the experience of a fully recessed downlight.  
**Optics** Light guide technology combined with diffusing lens conceals the LEDs from direct view and provides uniform lens luminaire.  
**LED Light Engine** LEDs mounted directly to heatsink designed to provide superior thermal management and ensure long life • 2700K, 3000K, 3500K or 4000K LED color temperature • LEDs binned for 4-step MacAdam ellipse color consistency • 90 CRI minimum.  
**LED Driver** Choice of dedicated 120 volt (120) driver or universal voltage (MVOLT) driver that accommodates input voltages from 120-277 volts AC at 50/60Hz • Power factor > 0.9 at 120V input • 120 volt driver is dimmable with the use of most incandescent, magnetic low voltage and electronic low voltage wall box dimmers • Universal voltage driver is dimmable with the use of most 0-10V wall box dimmers • External driver is only available on 5" and 7" models • For a list of compatible dimmers, see [JUNOSLIMFORM.COM/DM](#).  
**Emergency Battery Option** Available on fixture sizes 11" and larger • Battery factory assembled to fixture with integral test switch (E, option) • Drives LEDs for 90 minutes to meet Life Safety Code (NFPA-101), National Electrical Code (NEC), and UL requirements • Emergency battery not available in California due to Title 20 restrictions • EBX option provides back box without battery for consistent look when used in some space as fixtures with EL emergency option • Dump location only with emergency option.  
**Life** Rated for 50,000 hours at >70% lumen maintenance.  
**Labels** ENERGY STAR® certified • Certified to the high efficiency requirements of California T24 1A8-2016 • CSA listed for US and Canada • Suitable for wet locations (covered ceilings) • Dump location only with emergency option.  
**Testing** All reports are based on published industry procedures; actual performance may differ as a result of the end-use environment and applications. All values are design or typical values, measured under laboratory conditions at 25 °C.  
**Warranty** 5-year limited warranty. Complete warranty terms located at: [www.acuitybrands.com/support/warranty/terms-and-conditions](#)  
 Specifications subject to change without notice.  
**INSTALLATION**  
**Junction Box Mounting** Fixture provided with leads for direct wire connection in J-box • Installs directly to industry standard junction boxes • Compatible boxes include 4" metal or plastic octagonal standard and fire-rated junction boxes (3 1/2" junction box screw-hole spacing required for installation) • Minimum 2 1/8" deep junction box required for 5" and 7" fixtures (no depth requirement for 11" and larger fixtures) • Quick mount bracket provides fast installation of fully assembled fixture to junction box • Suitable for ceiling mount • Suitable for use within closet storage spaces when installed per NEC requirements.  
**Junction box sizes vary - Verify compatibility with fixture prior to installation**



External driver available on 5" and 7" models only.

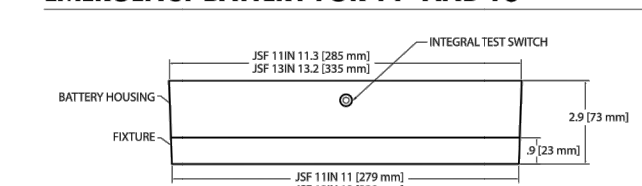


#### ROUND SPECIFICATIONS

Series	Width	Depth
JSF 5IN	5.25 (13.34)	0.75 (1.91)
JSF 7IN	7.77 (19.74)	0.75 (1.91)
JSF 11IN	11.08 (28.14)	0.9 (2.29)
JSF 13IN	13.05 (33.15)	0.9 (2.29)

All dimensions are in inches (millimeters) unless otherwise indicated.

#### EMERGENCY BATTERY FOR 11" AND 13"



**PERFORMANCE DATA**

	JSF 5IN	JSF 7IN	JSF 11IN	JSF 13IN
	120V MVOLT	120V MVOLT	120V MVOLT	120V MVOLT
Lumens	700	700	1000	1000
CRI	90CRI	90CRI	90CRI	90CRI
CCT	27K, 30K, 35K, 40K	27K, 30K, 35K, 40K	27K, 30K, 35K, 40K	27K, 30K, 35K, 40K
Voltage	120V	120V-277V	120V	120V-277V
Input Power	10W	10W	15W	15W
Input Current	110mA	50mA	150mA	60mA
Frequency	50/60Hz	50/60Hz	50/60Hz	50/60Hz
Power Factor	>0.9	>0.9	>0.9	>0.9

Example: JSF 5IN 07UM 27K 90CRI 120 FRPC WH

**ORDERING INFORMATION**

Series	Size/Lumens	Color Temperature	CRI	Voltage/Driver	Finish	Emergency Battery <sup>1,2</sup>
JSF SlimForm Surface Mount Downlight - Round	5IN 07UM	5", 700 Lumens	27K 2700K	120 FRPC	Dedicated 120V Forward Reverse Phase Dimming	ELI Battery Back-up Option
	7IN 10LM	7", 1000 Lumens	35K 3500K	MVOLT	Universal Voltage 120V-277V, 0-10V Dimming	EBE Empty Back Box for Aesthetics
	11IN 18LM	11", 1800 Lumens	40K 4000K			
	13IN 18LM	13", 1800 Lumens	40K 4000K			

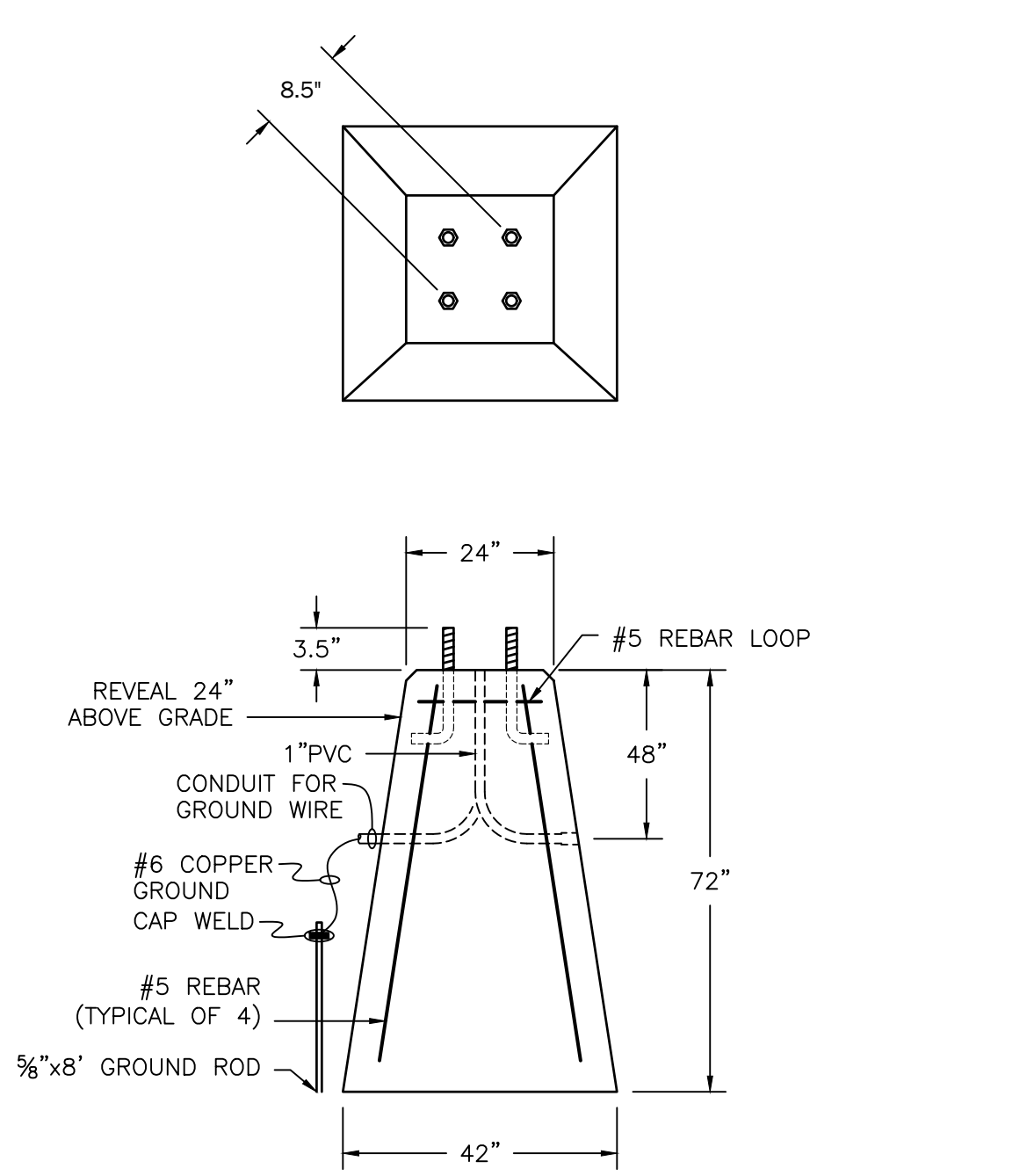
#### ACCESSORIES

**TRIM** - Optional, field installable finish trim rings available to change the exterior finish of fixture. Example: JSFTRIM 5IN BL

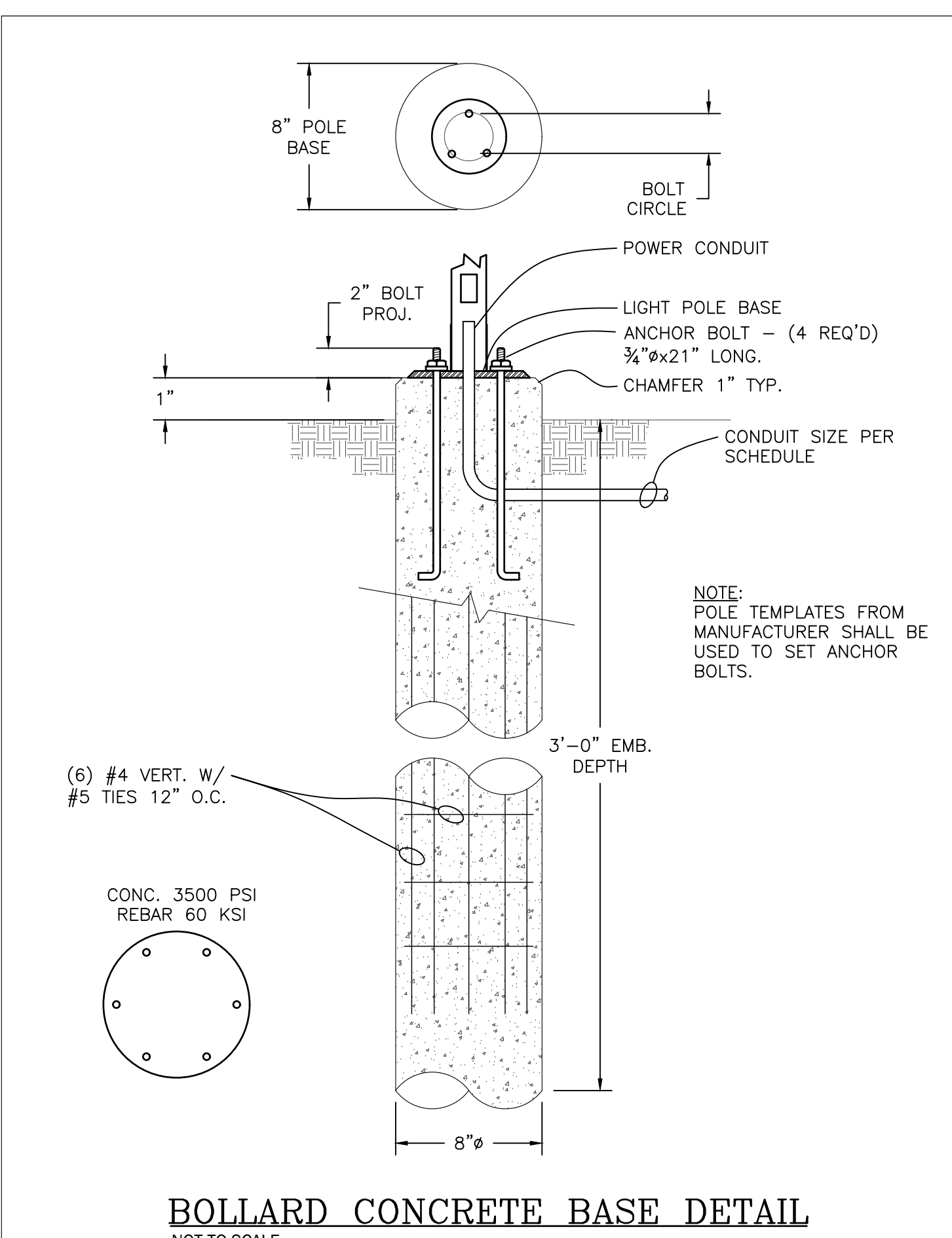
Series	Size	Finish
JSFTRIM SlimForm Accessory Trim	5IN	5 inches
	7IN	7 inches
	BL	Black
	BZ	Bronze
	SN	Satin Nickel

**SHROUD** - Optional, field installable decorative baffle and cone shrouds provides the aesthetic and source shielding similar to the experience of a fully recessed downlight. Example: JSFSHROUD 5IN DB WWH

Series	Size	Shroud Style	Finish
JSFSHROUD SlimForm Accessory Shroud - Round	7IN	7 inches	DB Downlight Baffle
			WWH White trim, white shroud



TAPERED LIGHT POLE BASE DETAIL NOT TO SCALE



BOLLARD CONCRETE BASE DETAIL NOT TO SCALE

278 MAIN STREET

PERMIT REVIEW SET 09/08/21

**Pearson & Associates**  
 MECHANICAL & ELECTRICAL ENGINEERS  
 A SUBSIDIARY OF DuBOIS & KING INC.

DATE: 09.08.2021  
 DRAWN BY: CDJ

**DESCRIPTION**

Lanterra 9002-W1 (Up or Down) and 9002-W2 (Up and Down) are small 2.5" O.D., line voltage cylinder fixtures with dimmable LED. The luminaire comes in various mountings, surface mount with integral driver in the housing, remote driver mount with round and square wall plates and square wall integral driver, all of which can be mounted over standard 4 inch j-box. The luminaire also comes with various field replaceable optics. It also comes with various lens, louvers and colors or dichroic filters, which can combine up to two at once to create multiple lighting effects. The fixture may be used indoors or outdoors and carries IP66 rating.

**SPECIFICATION FEATURES**

**Material**  
Housing and hood are precision-machined from corrosion resistant billet stock 6061-T6 aluminum, C802 bronze, C902 bronze\*, C110 copper or 3003D4 stainless steel.

**Finish**  
Fixtures constructed from 6061-T6 aluminum are double protected by an ROHS\* chemical film undercoating and polyester powder coat paint finish, surpassing the rigorous demands of the outdoor environment. A variety of standard colors are available.

**Natural Metals**  
Fixtures constructed from brass, bronze, copper or stainless steel are left unpainted to reveal the natural beauty of the material. Brass, bronze\* and copper will patina naturally over time.

**Hood**  
Hood is removable and accepts up to two internal accessories at once (lenses, louvers and filters) to achieve multiple lighting effects. Weep holes prevents water and mineral stains from collecting on the lens, even in

Catalog #	Type
	B
Project	Date
Comments	
Prepared by	

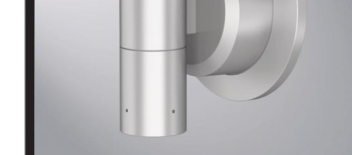
**Lumiere**

surge protection. LEDs are available in 2700K, 3000K, 3500K at 80CRI and 97CRI, 4000K at 80CRI and 97CRI, 5000K at 80CRI and are industry leading high output with 80% lumen maintenance at 60,000hrs.

**Compliance**  
Components are UL recognized and luminaires are cULus listed for 50°C ambient environments unless noted otherwise. Wet location listed, and ROHS\* compliant, IP66 Rated. DesignLights Consortium® Qualified and classified for both DLC Standard and DLC Premium, refer to www.designlights.org for details.

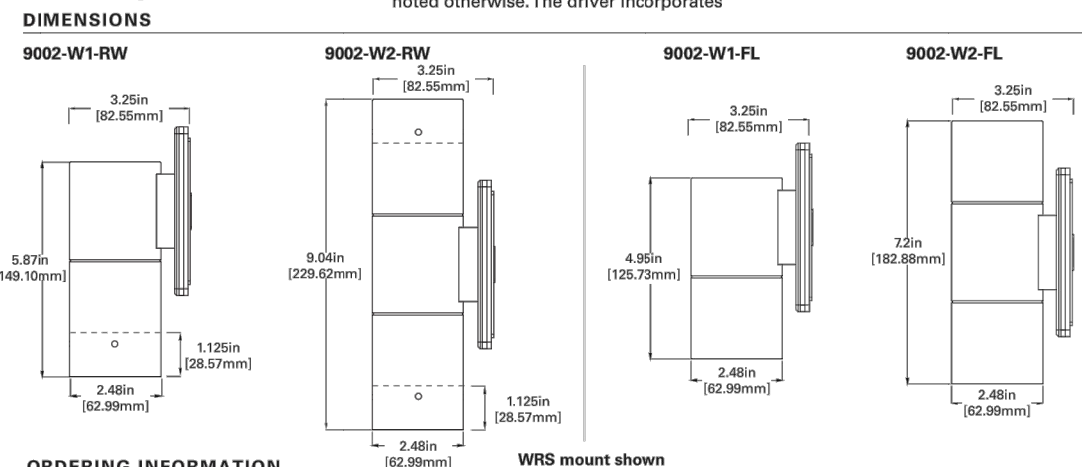
**Warranty**  
Lumiere warrants the Lanterra series of fixtures against defects in material and workmanship for five (5) years. Auxiliary equipment such as LED drivers carries the original manufacturer's warranty.

**Electrical**  
Long life LED system coupled with electronic driver (120-277V/50-60Hz) is compatible with TRIAC (Leading Edge Dimming), ELV (Trailing Edge Dimming) and 0-10V dimming to deliver optical performance. Light can be dimmed from 100-1% while maintaining constant CCT. It will operate in -30°C to 50°C unless noted otherwise. The driver incorporates



**Lanterra 9002**

LED  
INTERIOR / EXTERIOR  
CYLINDER FLOOD LIGHT  
CERTIFICATION DATA  
cULus - 1598  
Wet Location Listed - IP66  
LM79/LM80 Compliant  
ROHS\* Compliant  
10W LED, L70/90,000@ 25° Celsius



**ORDERING INFORMATION**

SERIES	DIRECTION	HOOD	LED CCT & CR	FIELD REPLICABLE OPTIC	FINISH	LIGHT LEVEL (10W)	VOLTAGE	INSTALLATION	OPTIONS
9002	W1 W2	Up or Down Up and Down	Standard-Recessed LED2700-3000K 80 CRI LED3000-3500K 80 CRI LED4000-4000K 80 CRI LED3500-3500K 80 CRI LED4000-4000K 80 CRI	S Spot M Medium F Flood W Wide	Standard Paint Finish BK Black BZ Bronze CS City Silver W1 White NBR Natural Brass NCP Natural Copper NSD Natural Stainless Steel	120 277V	120-277V	Surface Mount - Wall, Ceiling, Recessed RSM Round Surface Mount - recessed directly to junction box Remote Driver Housing WRS* Remote Driver Housing - Round Wall Plate WRS* Remote Driver Housing - Square Wall Plate Integral Driver Mount WIS* Wall Integral Driver Plate Thermal Protection Surface temperature sensor 60C 9002-W1-FL has L70=90,000	SNVPD* Standard integral sensor Thermal Protection Surface temperature sensor 60C 9002-W1-FL has L70=90,000

Notes: 1. Only available for double hood option (RSD). 2. Premium metal not available for RSD option. 3. Only available for Single Hood, Up or Down (W1) with RSM only. 4. Wet location listed requires listed with RSM only. 5. Remote Driver up to 8' ft. \*ROHS Compliant - For Natural materials consult factory. TD560023EN 11-28-18

Specifications and dimensions subject to change without notice.

**DESCRIPTION**

Lanterra 9003-W1 (Up or Down) and 9003-W2 (Up and Down) are 3.25" O.D., line voltage cylinder fixtures with dimmable LED. The luminaire comes in various mountings, surface mount with integral driver in the housing, remote driver mount with round and square wall plates and square wall integral driver, all of which can be mounted over standard 4 inch j-box. The luminaire also comes with various beam optics. It also comes with various lens, louvers and colors or dichroic filters, which can combine up to two at once to create multiple lighting effects. The fixture may be used indoors or outdoors and carries IP66 rating.

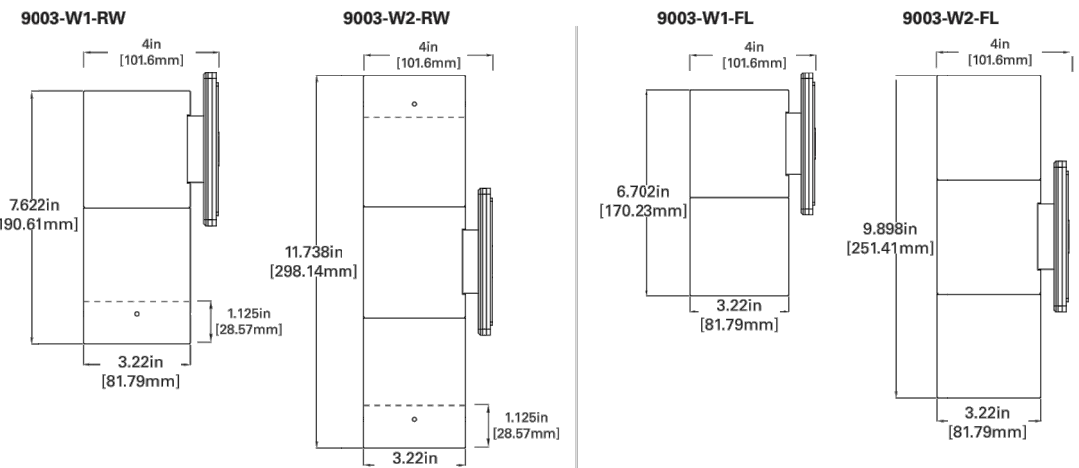
**SPECIFICATION FEATURES**

**Material**  
Housing and mounting stem are precision-machined from corrosion resistant billet stock 6061-T6 aluminum.

**Finish**  
Fixtures constructed from 6061-T6 aluminum are double protected by an ROHS\* chemical film undercoating and polyester powder coat paint finish, surpassing the rigorous demands of the outdoor environment. A variety of standard colors are available.

**Hood**  
Hood is removable and accepts up to two internal accessories at once (lenses, louvers and filters) to achieve multiple lighting effects. Weep holes prevents water and mineral stains from collecting on the lens, even in the straight up position. The flush lens design reduces fixture length, minimizes debris collection and prevents water and mineral stains from collecting on the lenses.

**Electrical**  
Long life LED system coupled with electronic driver (120-277V/50-60Hz) is compatible with TRIAC (Leading Edge Dimming), ELV (Trailing Edge Dimming) and 0-10V dimming to deliver optical performance. Light can be dimmed from 100-1% while maintaining constant CCT. It will operate in -30°C to 50°C unless noted otherwise. The driver incorporates surge protection. LEDs are available in 2700K, 3000K, 3500K at 80CRI and 97CRI, 4000K at 80CRI and 97CRI, 5000K



**ORDERING INFORMATION**

SERIES	DIRECTION	HOOD	LED CCT & CR	FIELD REPLICABLE OPTIC	FINISH	LIGHT LEVEL (10W)	VOLTAGE	INSTALLATION	OPTIONS
9003	W1 W2	Up or Down Up and Down	Standard-Recessed LED2700-3000K 80 CRI LED3000-3500K 80 CRI LED4000-4000K 80 CRI LED3500-3500K 80 CRI LED4000-4000K 80 CRI	S Spot M Medium F Flood W Wide	Standard Paint Finish BK Black BZ Bronze CS City Silver W1 White L2 Light 220V	120 277V	120-277V	Surface Mount - Wall, Ceiling, Recessed RSM Round Surface Mount - recessed directly to junction box Remote Driver Housing WRS* Remote Driver Housing - Round Wall Plate WRS* Remote Driver Housing - Square Wall Plate Integral Driver Mount WIS* Wall Integral Driver Plate Thermal Protection Surface temperature sensor 60C 9003-W1-FL has L70=90,000	SNVPD* Standard integral sensor Thermal Protection Surface temperature sensor 60C 9003-W1-FL has L70=90,000

Notes: 1. Only available for double hood option (RSD). 2. Premium metal not available for L2. 3. Only available for Single Hood, Up or Down (W1) with RSM only. 4. Wet location listed requires listed with RSM only. 5. Remote Driver distance up to 8' ft. \*ROHS Compliant - For Natural materials consult factory. TD560024EN 11-28-18

Specifications and dimensions subject to change without notice.

**Lumiere**

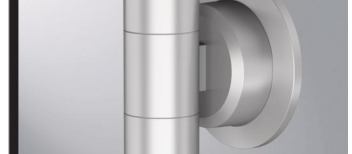
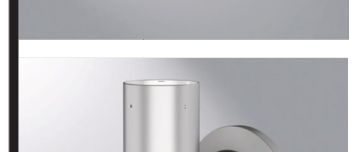
Catalog #	Type
	B1
Project	Date
Comments	
Prepared by	

at 80CRI and are industry leading high output with 87% lumen maintenance at 60,000hrs.

**Compliance**  
Components are UL recognized and luminaires are cULus listed for 50°C ambient environments unless noted otherwise, wet location listed, and ROHS compliant, IP66 Rated. DesignLights Consortium® Qualified and classified for both DLC Standard and DLC Premium, refer to www.designlights.org for details.

**Warranty**  
Lumiere warrants the Lanterra series of fixtures against defects in material and workmanship for five (5) years. Auxiliary equipment such as LED drivers carries the original manufacturer's warranty.

**Electrical**  
Long life LED system coupled with electronic driver (120-277V/50-60Hz) is compatible with TRIAC (Leading Edge Dimming), ELV (Trailing Edge Dimming) and 0-10V dimming to deliver optical performance. Light can be dimmed from 100-1% while maintaining constant CCT. It will operate in -30°C to 50°C unless noted otherwise. The driver incorporates surge protection. LEDs are available



**Lanterra 9003**

LED  
INTERIOR / EXTERIOR  
CYLINDER FLOOD LIGHT  
CERTIFICATION DATA  
cULus - 1598  
Wet Location Listed - IP66  
LM79/LM80 Compliant  
ROHS Compliant  
10W LED, L70/102,000@ 25° Celsius



Project	Catalog #	Type	SB
Prepared by	Notes	Date	



**McGraw-Edison**  
**BRT6 Bollard**

Round LED Pedestrian Luminaire

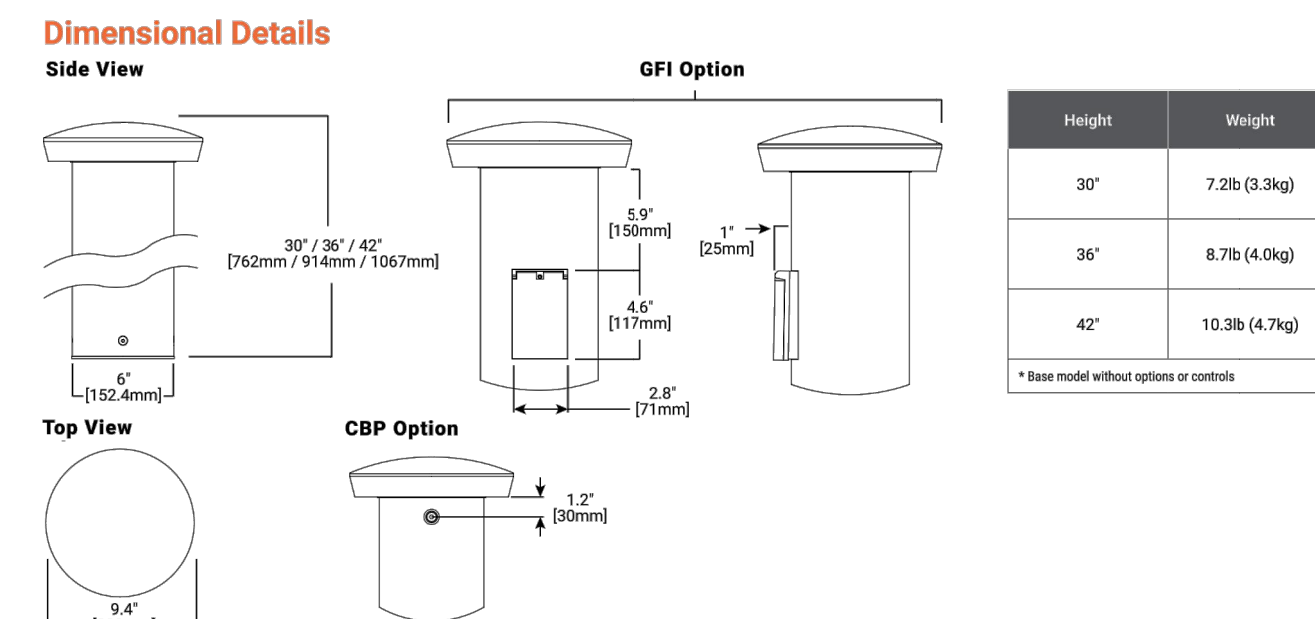
Typical Applications  
Outdoor - Walkway - Perimeter - Landscapes - Hardscapes

**Interactive Menu**

- Ordering Information page 2
- Product Specifications page 2
- Optical Distributions page 2
- Energy and Performance Data page 3



- Quick Facts**
- 4 Optical Distributions
  - Available in 30", 36", and 42"
  - Lumen packages range from 560 - 4400 (SW - 49W)
  - Efficacy up to 122 lumens per watt
  - Zero uplight on all configurations



Specifications and dimensions subject to change without notice.

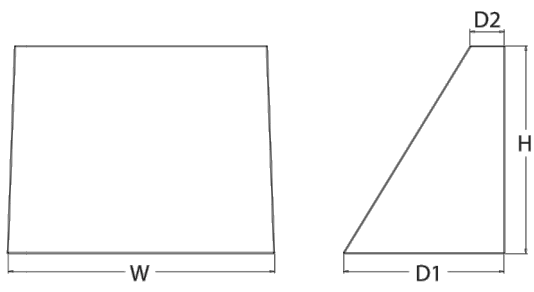
© 2019-2021 Acuity Brands Lighting, Inc. All rights reserved.

**WDGE2 LED**  
Architectural Wall Sconce  
Precision Refractive Optic



**Specifications**

Depth (D1): 7"  
Depth (D2): 1.5"  
Height: 9"  
Width: 11.5"  
Weight: 13.5 lbs (without options)



**Introduction**

The WDGE LED family is designed to meet specifier's every wall-mounted lighting need in a widely accepted shape that blends with any architecture. The clean rectangular design comes in four sizes with lumen packages ranging from 1,200 to 25,000 lumens, providing a true site-wide solution. Embedded with nLight® AIR wireless controls, the WDGE family provides additional energy savings and code compliance. WDGE2 with industry leading precision refractive optics provides great uniform distribution and optical control. When combined with multiple integrated emergency battery backup options, including an 18W cold temperature option, the WDGE2 becomes the ideal wall-mounted lighting solution for pedestrian scale applications in any environment.

**WDGE LED Family Overview**

Luminaire	Optic	Standard EM, 0°C	Cold EM, -20°C	Setback	P0	P1	P2	P3	P4	P5	P6
WDGE1 LED	Visual Comfort	4W	--	--	750	1,200	2,000	--	--	--	--
WDGE2 LED	Visual Comfort	10W	18W	Standalone / nLight	--	1,200	2,000	3,000	4,500	6,000	--
WDGE2 LED	Precision Refractive	10W	18W	Standalone / nLight	700	1,200	2,000	3,200	4,200	--	--
WDGE3 LED	Precision Refractive	15W	18W	Standalone / nLight	--	7,500	8,500	10,000	12,000	--	--
WDGE4 LED	Precision Refractive	--	--	Standalone / nLight	--	12,000	16,000	18,000	20,000	22,000	25,000

**Ordering Information**

Series	Package	Color Temperature	CRI	Distribution	Voltage	Mounting	Shipped included	Shipped separately
WDGE2 LED	P0†	27K	2700K	70CPI	120	Type I Short	WWS†	Shipped separately
	P1†	3000	3000K	80CRI	120V	Type II Medium	SRM†	Type II Medium wall spacer
	P2†	40K	4000K	LW Limited Wavelength	120V	Type III Medium	ICW	Indirect Canopy/Ceiling Washer bracket (dry/damp locations only)
	P3†	50K	5000K	AMB†	120V	Type IV Medium	TTM	Forward Throw Medium

Options	Finish
E10WN Emergency battery backup, Certified in CA Title 20 MAE035 (10W, 5°C min)	DD02 Dark bronze
E20WN Emergency battery backup, Certified in CA Title 20 MAE035 (10W, -20°C min)	DL02 Black
PE† Photocell, Button type	DA02 Natural aluminum
DMC† 0-10V dimming wires pulled outside fixture (for use with an external control, ordered separately). Total of 4 entry points.	DN02 White
BCE Bottom conduit entry for back box (P8W). Total of 4 entry points.	DD02D Textured dark bronze
	DL02D Textured black
	DA02D Textured natural aluminum
	DN02D Textured white
	DS02D Textured sandstone

© 2019-2021 Acuity Brands Lighting, Inc. All rights reserved.

PERMIT REVIEW SET 09/08/21

278 MAIN STREET

**Pearson & Associates**  
MECHANICAL & ELECTRICAL ENGINEERS  
A SUBSIDIARY OF DuBOIS & KING INC.

DATE: 09.08.2021  
DRAWN BY: CDJ



VIEW LOOKING NORTH WEST FROM ABOVE

# 278 MAIN STREET

BURLINGTON, VERMONT

COPYRIGHT © 2021. ALL RIGHTS RESERVED  
DUNCAN • WISNIEWSKI ARCHITECTURE  
A Professional Corporation

SCHEMATIC DESIGN

**Duncan  
Wisniewski**   
ARCHITECTURE

255 SOUTH CHAMPLAIN STREET  
BURLINGTON, VERMONT 05401  
T: 802.864.6693

DATE: 08.31.2021



VIEW LOOKING NORTH WEST FROM SIDEWALK

# 278 MAIN STREET

BURLINGTON, VERMONT

COPYRIGHT © 2021. ALL RIGHTS RESERVED  
DUNCAN • WISNIEWSKI ARCHITECTURE  
A Professional Corporation

SCHEMATIC DESIGN

**Duncan  
Wisniewski**   
ARCHITECTURE

DATE: 08.31.2021

255 SOUTH CHAMPLAIN STREET  
BURLINGTON, VERMONT 05401  
T: 802.864.6693



VIEW LOOKING NORTH WEST

# 278 MAIN STREET

BURLINGTON, VERMONT

COPYRIGHT © 2021 ALL RIGHTS RESERVED  
DUNCAN • WISNIEWSKI ARCHITECTURE  
A Professional Corporation

SCHEMATIC DESIGN

**Duncan  
Wisniewski**   
ARCHITECTURE

255 SOUTH CHAMPLAIN STREET  
BURLINGTON, VERMONT 05401  
T: 802.864.6693

DATE: 08.31.2021



VIEW LOOKING SOUTH WEST

# 278 MAIN STREET

BURLINGTON, VERMONT

COPYRIGHT © 2021 ALL RIGHTS RESERVED  
DUNCAN • WISNIEWSKI ARCHITECTURE  
A Professional Corporation

SCHEMATIC DESIGN

**Duncan  
Wisniewski**   
ARCHITECTURE

DATE: 08.31.2021

255 SOUTH CHAMPLAIN STREET  
BURLINGTON, VERMONT 05401  
T: 802.864.6693



VIEW LOOKING SOUTH EAST

# 278 MAIN STREET

BURLINGTON, VERMONT

COPYRIGHT © 2021 ALL RIGHTS RESERVED  
DUNCAN • WISNIEWSKI ARCHITECTURE  
A Professional Corporation

SCHEMATIC DESIGN

**Duncan  
Wisniewski**   
ARCHITECTURE

DATE: 08.31.2021

255 SOUTH CHAMPLAIN STREET  
BURLINGTON, VERMONT 05401  
T: 802.864.6693



VIEW LOOKING NORTH FROM SIDE WALK

# 278 MAIN STREET

BURLINGTON, VERMONT

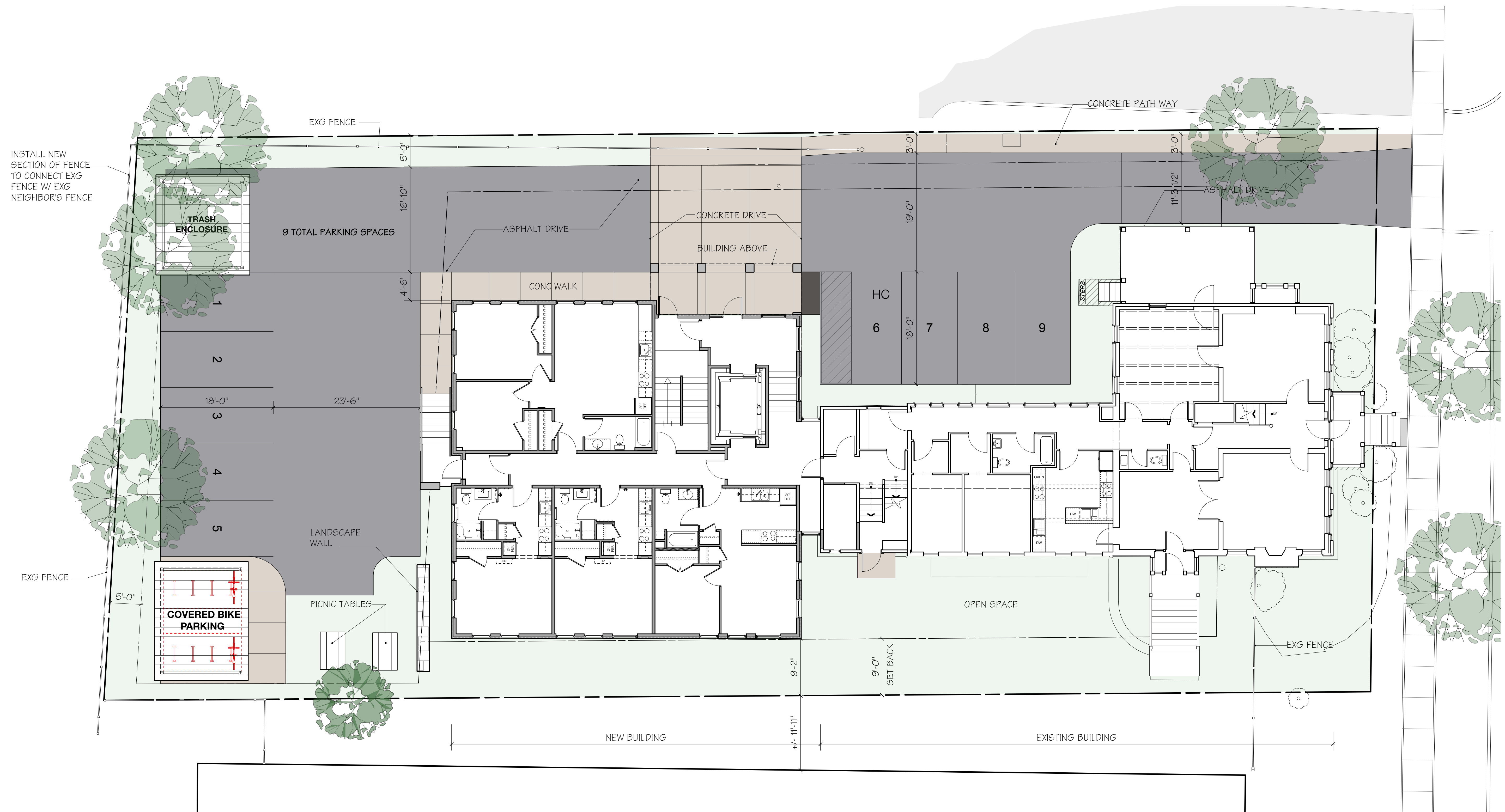
COPYRIGHT © 2021. ALL RIGHTS RESERVED  
DUNCAN • WISNIEWSKI ARCHITECTURE  
A Professional Corporation

SCHEMATIC DESIGN

**Duncan  
Wisniewski**   
ARCHITECTURE

255 SOUTH CHAMPLAIN STREET  
BURLINGTON, VERMONT 05401  
T: 802.864.6693

DATE: 08.31.2021



**SITE PLAN**  
Scale: 1/8" = 1'-0"

# 278 MAIN STREET

BURLINGTON, VERMONT

**Duncan Wisniewski**  
ARCHITECTURE

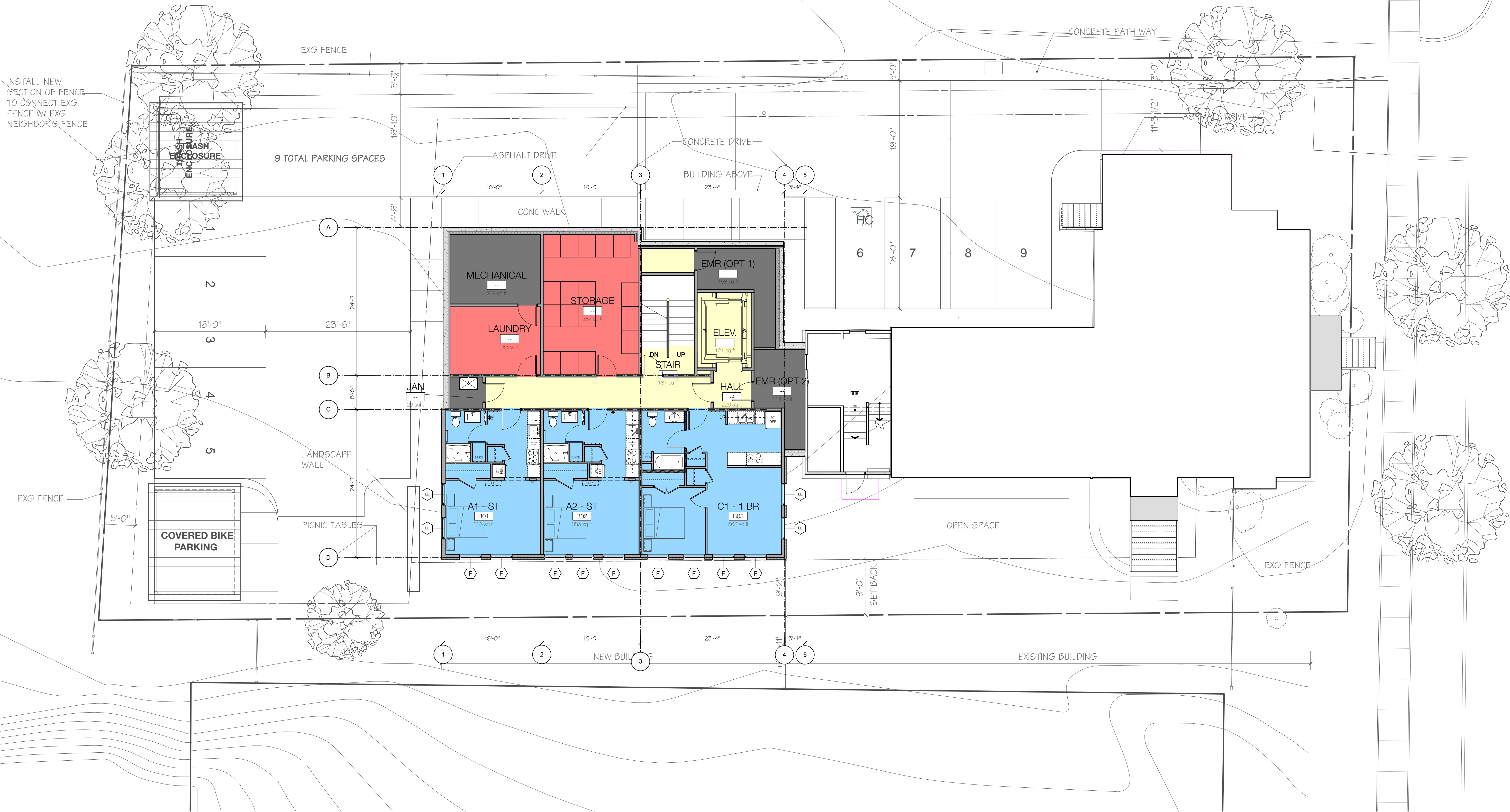
255 SOUTH CHAMPLAIN STREET  
BURLINGTON, VERMONT 05401  
T: 802.864.6693

DATE: 08.31.2021  
DRAWN: ABC

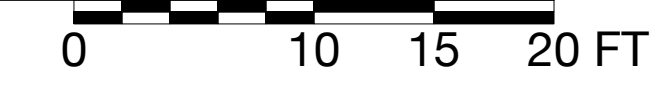
L1-1.0

COPYRIGHT © 2021 ALL RIGHTS RESERVED  
DUNCAN • WISNIEWSKI ARCHITECTURE  
A Professional Corporation

**SCHEMATIC DESIGN**



**BASEMENT FLOOR PLAN**  
Scale: 1/8" = 1'-0"



**278 MAIN STREET**  
BURLINGTON, VERMONT

**Duncan Wisniewski**  
ARCHITECTURE

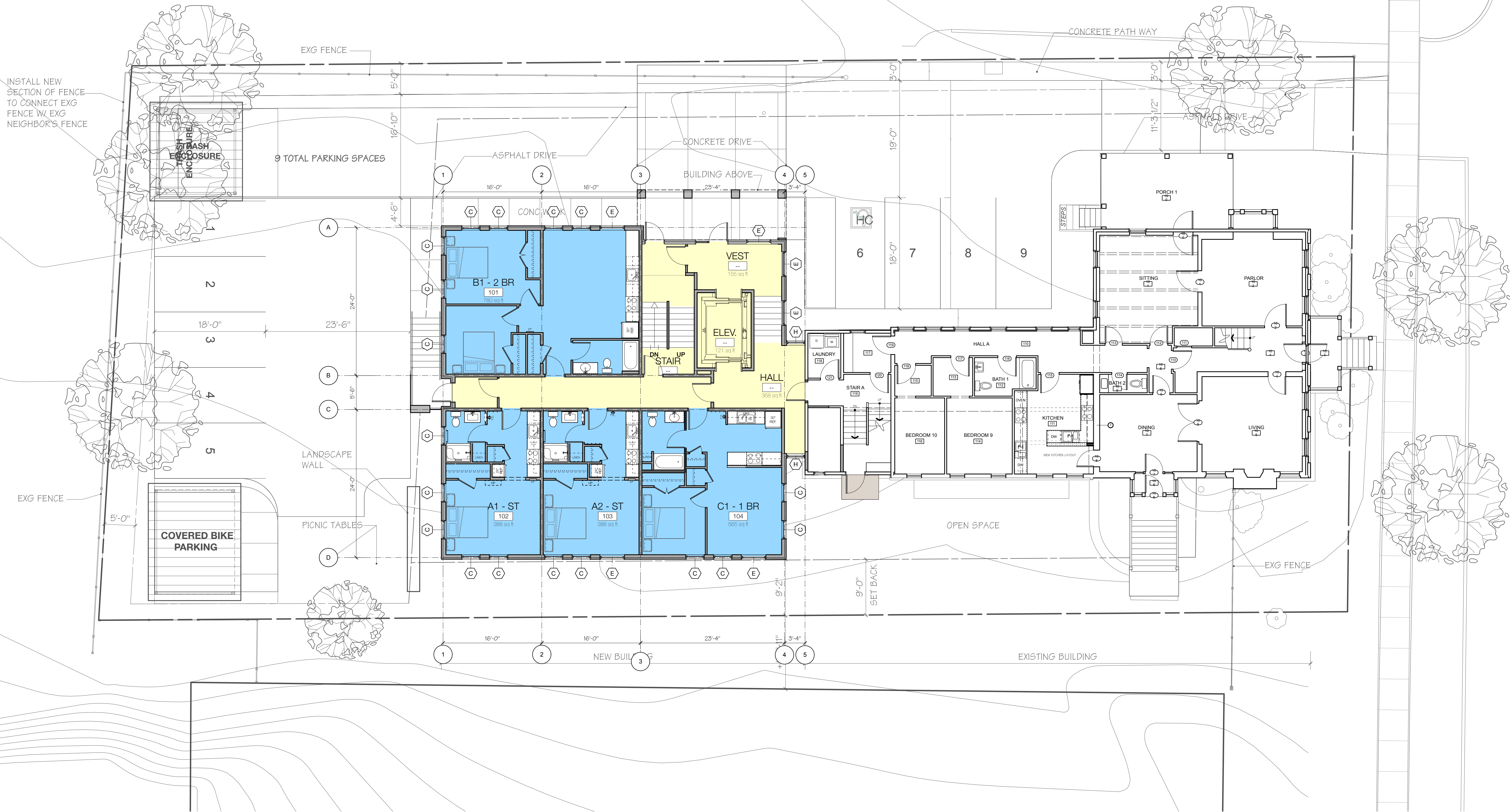
255 SOUTH CHAMPLAIN STREET  
BURLINGTON, VERMONT 05401  
T: 802.864.6693

DATE: 08.31.2021  
DRAWN: ABC

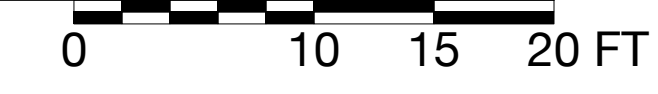
A1-0.0

COPYRIGHT © 2021 ALL RIGHTS RESERVED  
DUNCAN • WISNIEWSKI ARCHITECTURE  
A Professional Corporation

SCHEMATIC DESIGN



FIRST FLOOR PLAN  
Scale: 1/8" = 1'-0"



# 278 MAIN STREET

BURLINGTON, VERMONT

**Duncan Wisniewski**  
ARCHITECTURE

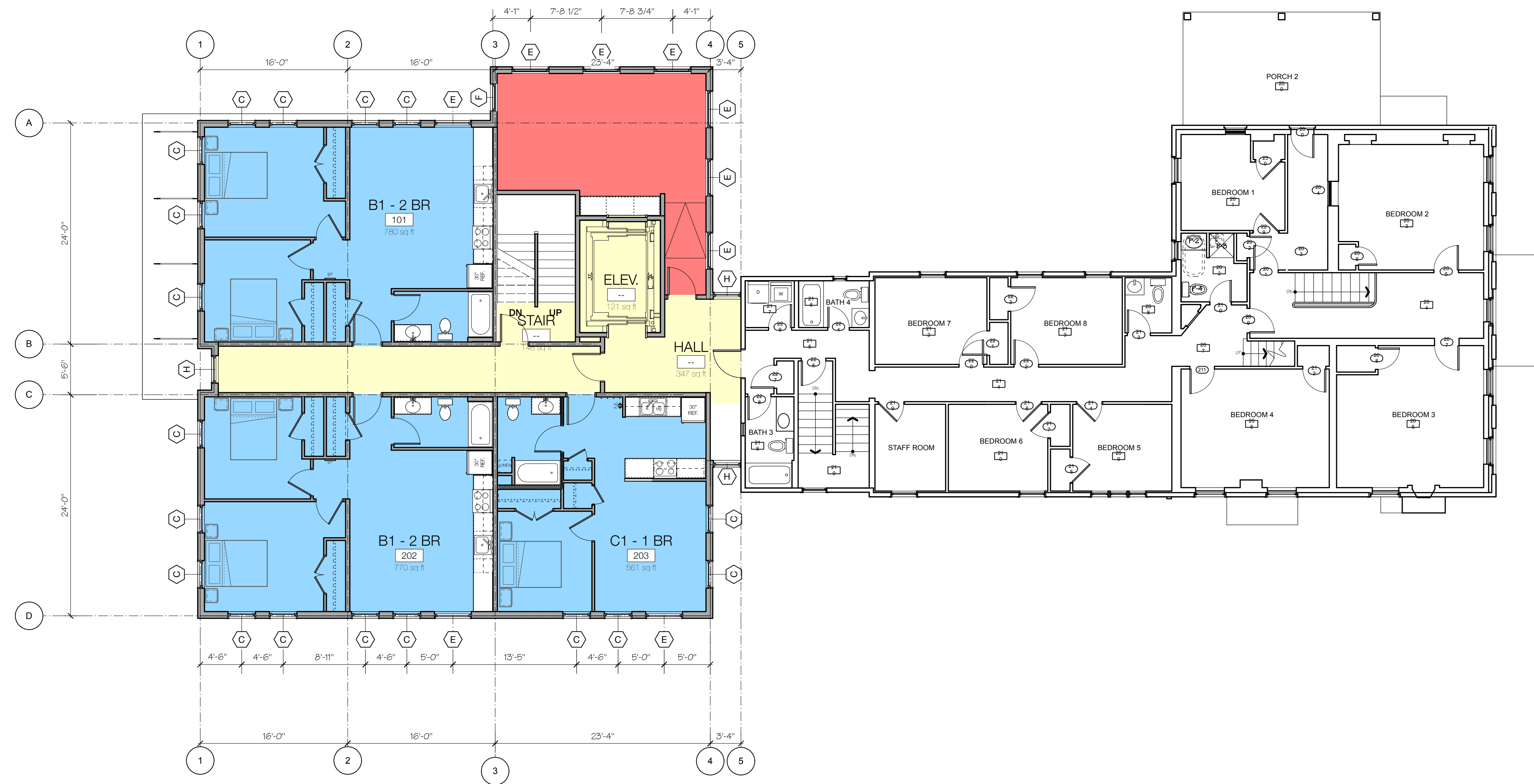
255 SOUTH CHAMPLAIN STREET  
BURLINGTON, VERMONT 05401  
T: 802.864.6693

DATE: 08.31.2021  
DRAWN: ABC

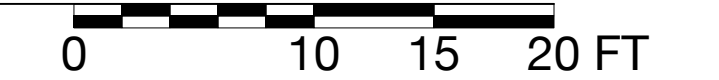
A1-1.0

COPYRIGHT © 2021 ALL RIGHTS RESERVED  
DUNCAN • WISNIEWSKI ARCHITECTURE  
A Professional Corporation

SCHEMATIC DESIGN



SECOND FLOOR PLAN  
Scale: 1/8" = 1'-0"



278 MAIN STREET  
BURLINGTON, VERMONT

Duncan  
Wisniewski ARCHITECTURE

255 SOUTH CHAMPLAIN STREET  
BURLINGTON, VERMONT 05401  
T: 802.864.6693

DATE: 08.31.2021  
DRAWN: ABC

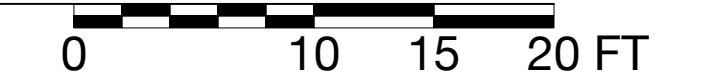
A1-2.0

COPYRIGHT © 2021 ALL RIGHTS RESERVED  
DUNCAN • WISNIEWSKI ARCHITECTURE  
A Professional Corporation

SCHEMATIC DESIGN



THIRD FLOOR PLAN  
Scale: 1/8" = 1'-0"



278 MAIN STREET  
BURLINGTON, VERMONT

Duncan  
Wisniewski  
ARCHITECTURE

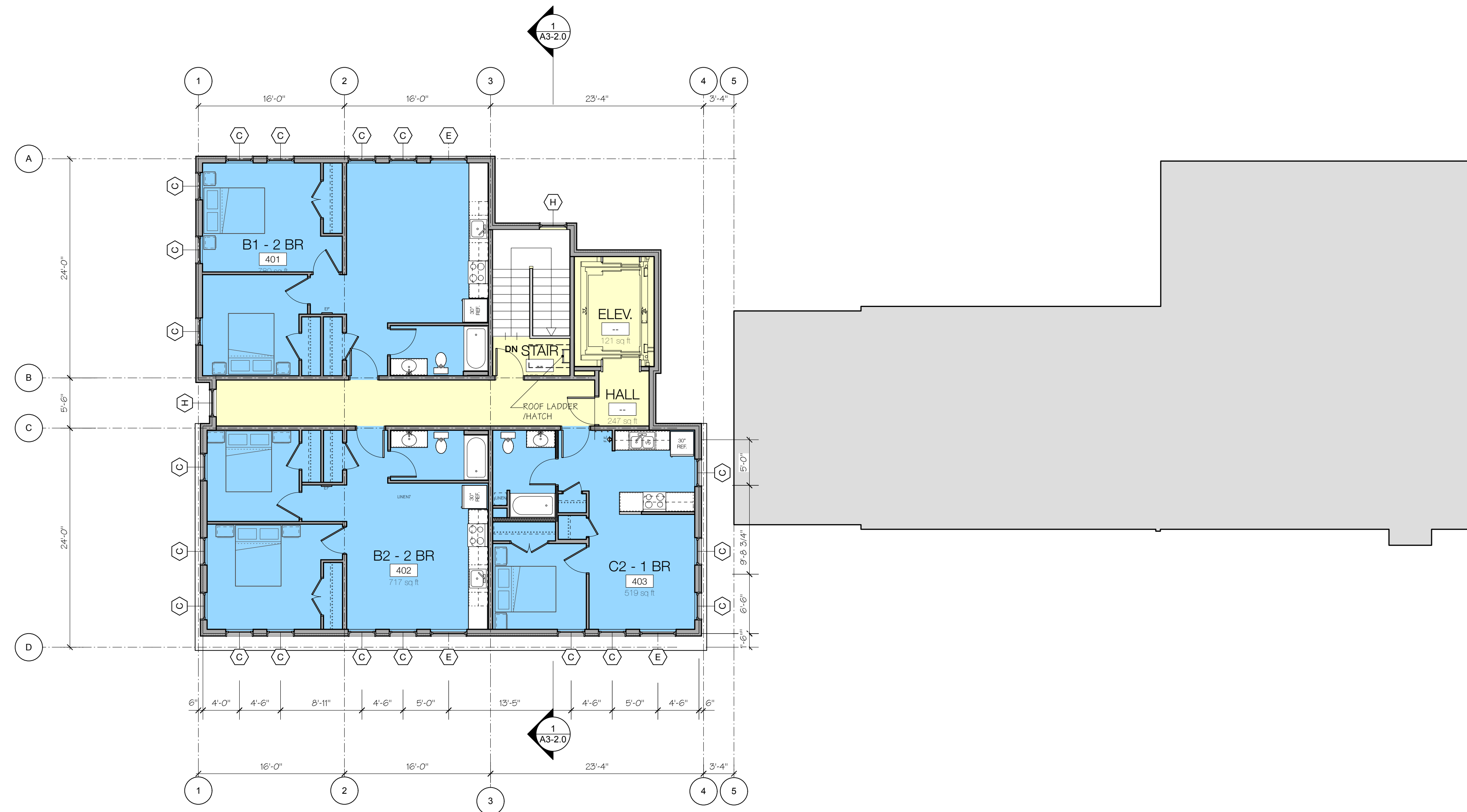
255 SOUTH CHAMPLAIN STREET  
BURLINGTON, VERMONT 05401  
T: 802.864.6693

DATE: 08.31.2021  
DRAWN: SB, PJC

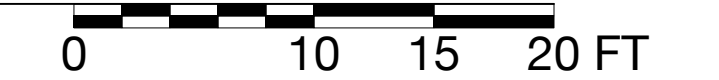
A1-3.0

COPYRIGHT © 2021 ALL RIGHTS RESERVED  
DUNCAN • WISNIEWSKI ARCHITECTURE  
A Professional Corporation

SCHEMATIC DESIGN



FOURTH FLOOR PLAN  
Scale: 1/8" = 1'-0"



278 MAIN STREET  
BURLINGTON, VERMONT

Duncan  
Wisniewski ARCHITECTURE

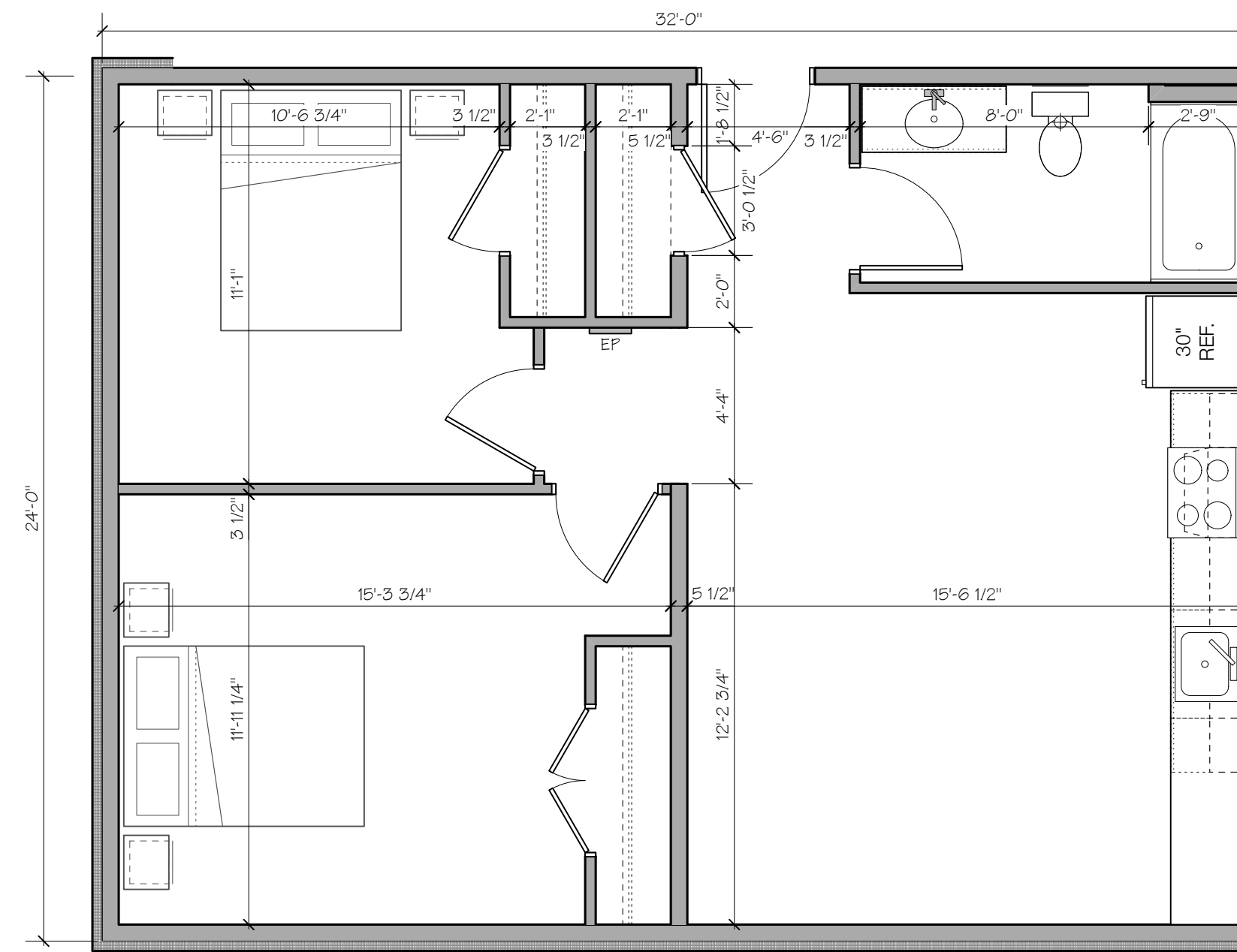
255 SOUTH CHAMPLAIN STREET  
BURLINGTON, VERMONT 05401  
T: 802.864.6693

DATE: 08.31.2021  
DRAWN: SB, PJC

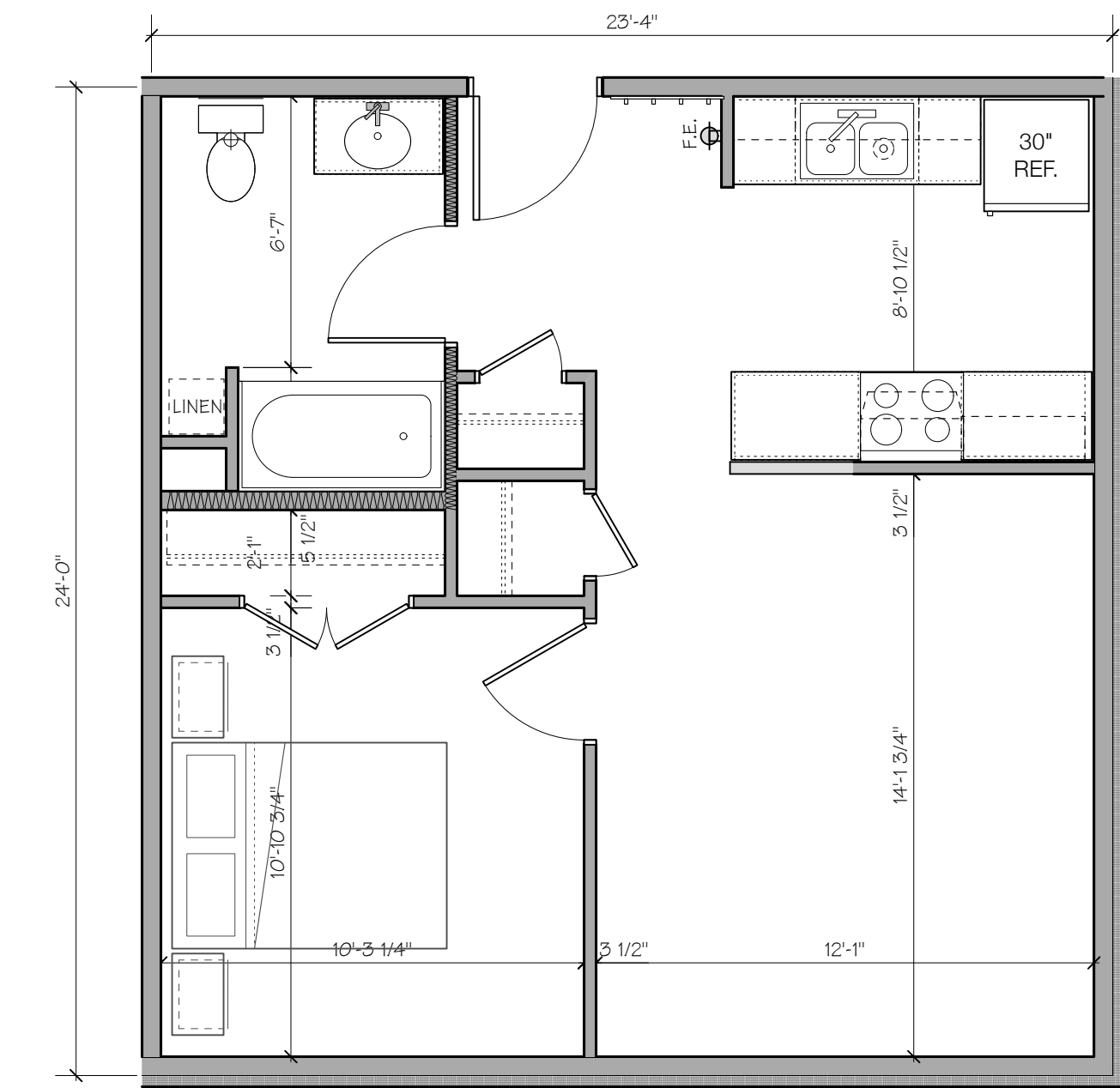
A1-4.0

COPYRIGHT © 2021 ALL RIGHTS RESERVED  
DUNCAN • WISNIEWSKI ARCHITECTURE  
A Professional Corporation

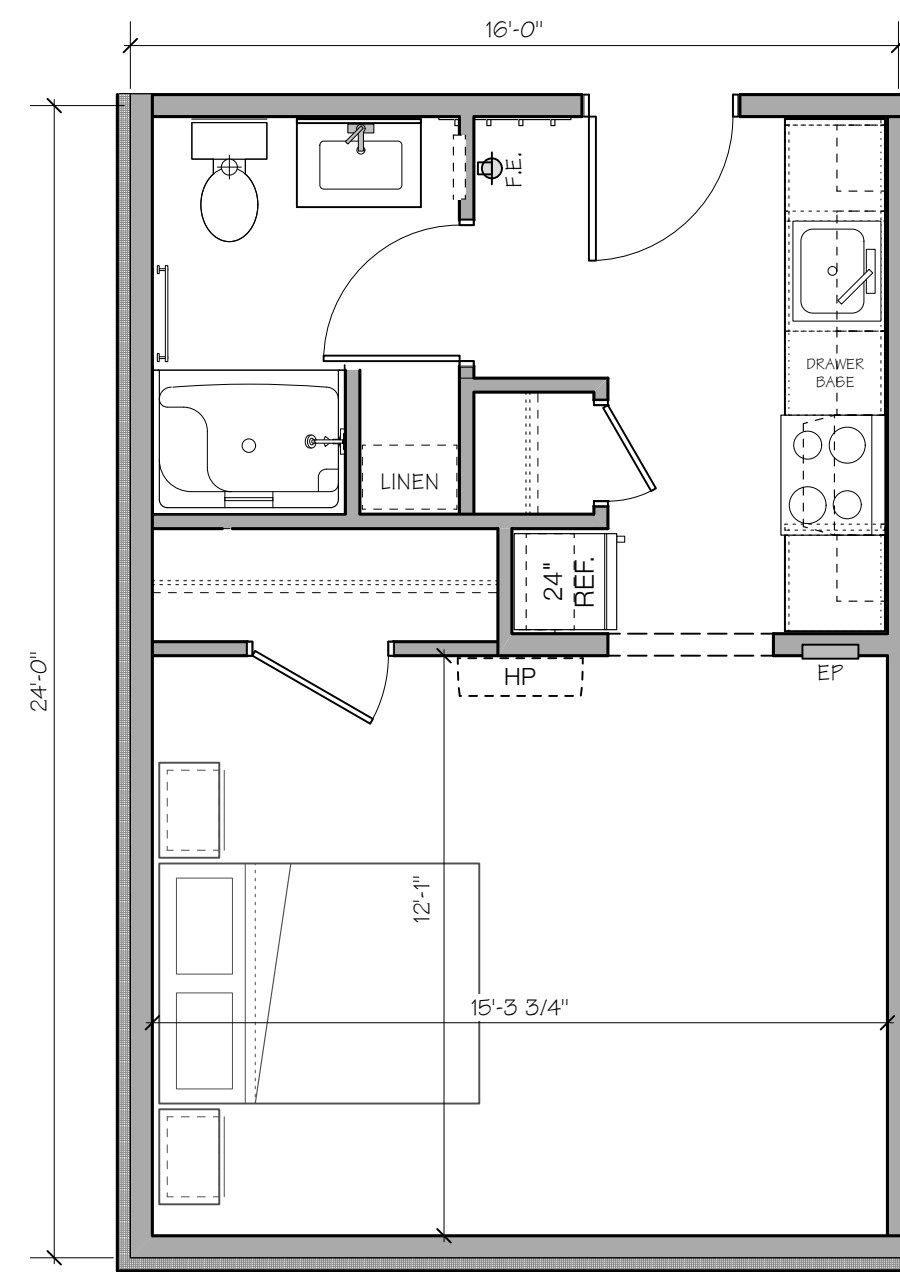
SCHEMATIC DESIGN



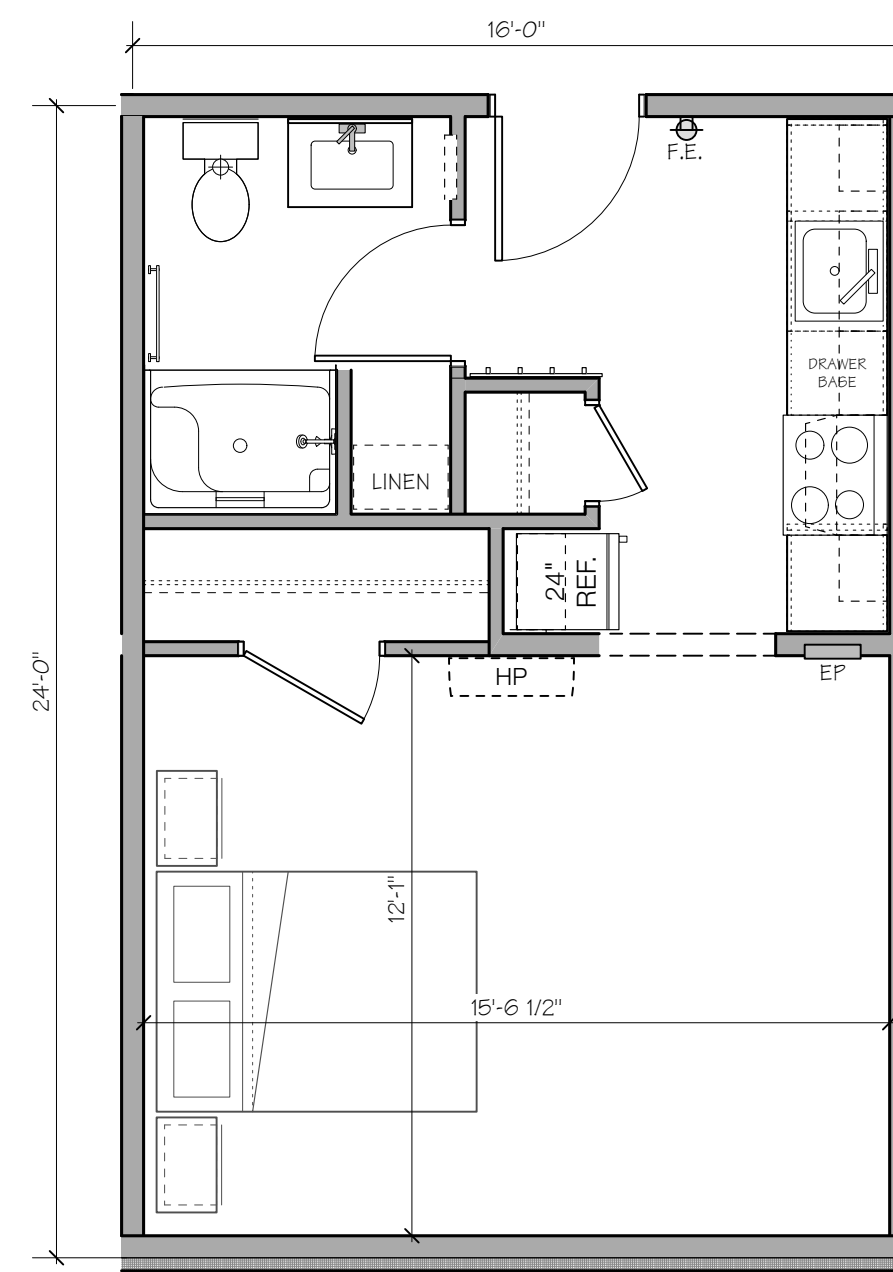
**B1** UNIT B1 - 730 SF NET, UNITS: 202, 301, 302, 401  
Scale: 1/4" = 1'-0"



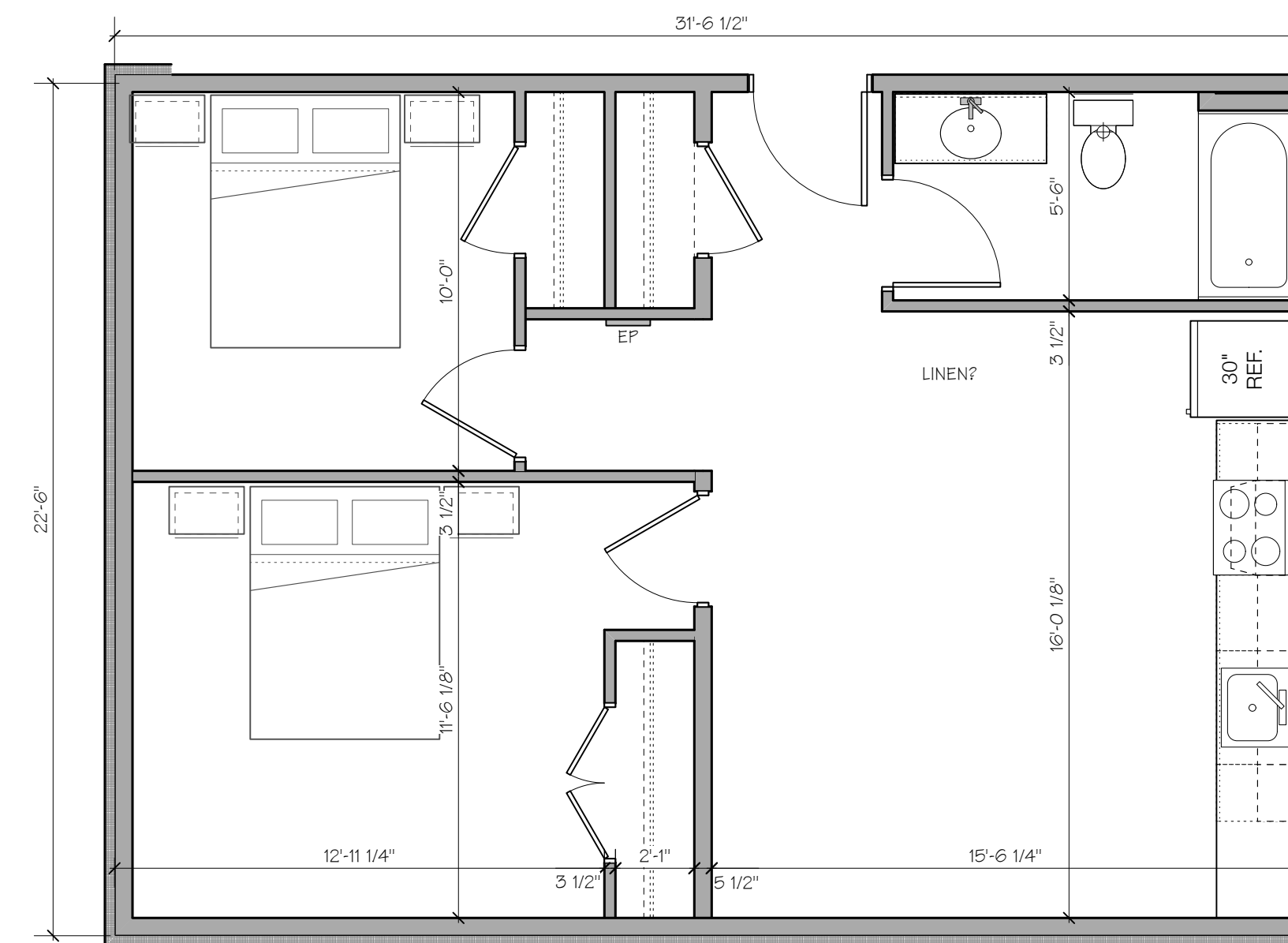
**C1** UNIT C1 - 551 SF, UNITS: 104, 203, 303  
Scale: 1/4" = 1'-0"



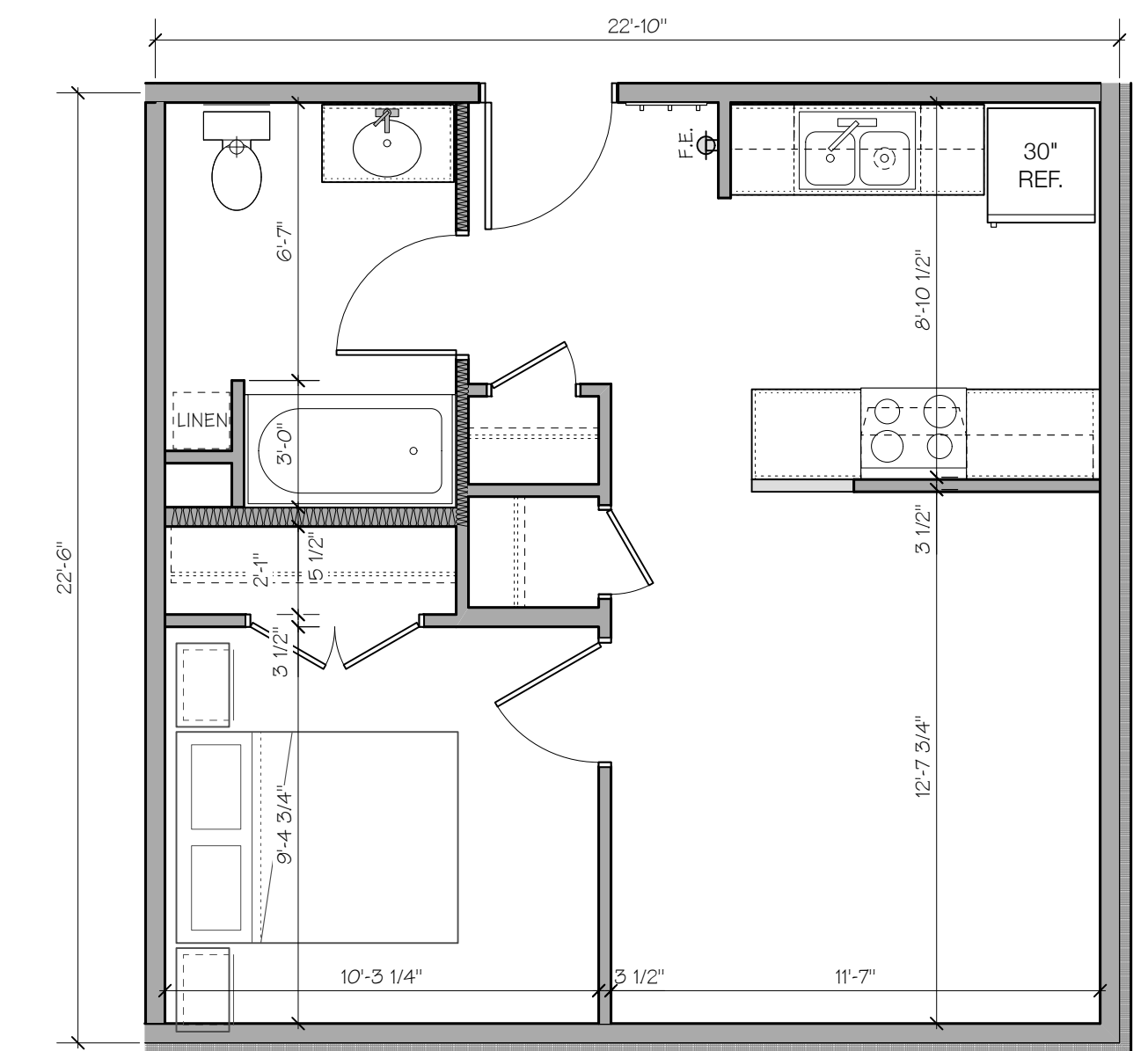
**A1** UNIT D1 - 357 SF NET, UNITS: B01, 102  
Scale: 1/4" = 1'-0"



**A2** UNIT D2 - 362 SF NET, UNITS: B02, 103  
Scale: 1/4" = 1'-0"



**B2** UNIT B2 - 672 SF NET, UNIT: 402  
Scale: 1/4" = 1'-0"



**C2** UNIT C2 - 505 SF NET, UNIT: 403  
Scale: 1/4" = 1'-0"

# 278 MAIN STREET

BURLINGTON, VERMONT

Duncan  
Wisniewski  
ARCHITECTURE

255 SOUTH CHAMPLAIN STREET  
BURLINGTON, VERMONT 05401  
T: 802.864.6693

DATE: 08.31.2021  
DRAWN: XXX, XXX

A1-7.0

COPYRIGHT © 2021 ALL RIGHTS RESERVED  
DUNCAN • WISNIEWSKI ARCHITECTURE  
A Professional Corporation

SCHEMATIC DESIGN



1 NORTH ELEVATION  
Scale: 1/8" = 1'-0"

2 EAST ELEVATION  
Scale: 1/8" = 1'-0"



5 SOUTH ELEVATION  
Scale: 1/8" = 1'-0"



4 WEST ELEVATION  
Scale: 1/8" = 1'-0"

# 278 MAIN STREET

BURLINGTON, VERMONT

Duncan  
Wisniewski   
ARCHITECTURE  
255 SOUTH CHAMPLAIN STREET  
BURLINGTON, VERMONT 05401  
T: 802.864.6693

DATE: 08.31.2021  
DRAWN: XXX, XXX

A2-1.0

COPYRIGHT © 2021 ALL RIGHTS RESERVED  
DUNCAN • WISNIEWSKI ARCHITECTURE  
A Professional Corporation

SCHEMATIC DESIGN



# Neighborhood Planning Assembly Minutes

NPA: (choose one)	<b>Wards 1 &amp; 8</b>	Wards 2 & 3	Wards 4 & 7	Ward 5	Ward 6
----------------------	----------------------------	----------------	----------------	-----------	-----------

Date of Assembly: 9/8/2021 Start Time: (Commence): 7:00 PM

Location: Zoom and Sharon Bushor Conference Room, City Hall

Finish Time: (Adjourn): 9:02 PM

Note taker: Tom Derenthal, reformatted and revised by Kirsten Wilson, CEDO

## Steering Committee Members in Attendance:

Carol Livingston (Ward 1), Hannah King (Ward 8), Jonathan Chapple-Sokol (Ward 1), and Tom Derenthal (Ward 1)

## Discussion Topics

- 7:00PM Announcements, Introductions
- 7:05PM Speakout
- 7:15PM Appointment of Ward Representatives to Ad Hoc Committee on Redistricting
  - Overview and Expectations – Tom Derenthal
  - 'Self-nominations' and nominations
  - Nominee introductions and statements with NPA Q&A
  - Election
- 7:45PM Burlington's Capital Plan, November Ballot Items – Martha Keenan, Capital & Special Projects Director, Clerk & Treasurer's Office
- 8:10PM Addition, COTS Family Shelter at 278 Main Street – Bob Duncan, Duncan Wisniewski Architecture
- 8:25PM City Council Reports
- 8:50PM School Commissioner Reports
- 9:00PM Adjourn

## Actions Taken / Decisions Made

- Richard Hillyard was nominated and appointed to represent W1 on the Ad Hoc Redistricting Committee [unanimous decision]
- Anne Brena was nominated and appointed to represent W8 on the Ad Hoc Redistricting Committee [unanimous decision]

## Zoom Attendance:

Anne Brena MD	Gail Shampoins	Keith Pillsbury
Arthur Chukhman, Duncan Wisniewski Architecture	Hannah King	Martha Keenan
Rep. Brian Cina	Councilor Jack Hanson (he/him)	Town Meeting TV
Caryn Long	Councilor Jane Stromberg	Councilor Zoraya Hightower (she/her)
Bob Duncan, Duncan Wisniewski Architecture	Jean Hopkins	
Fletcher Pratt	Jonathan Farrell, COTS	

## In- Person Attendance:

Angie Chapple-Sokol	Kirsten Wilson (CEDO)	Richard Hillyard
Carol Livingston	Jonathan Chapple-Sokol	Tom Derenthal

## **Agenda Items and Actions:**

### **Announcements, Introductions**

#### **Speakout**

Brian Cina

- Proposed a non-police group to patrol neighborhoods and address issues where the police are not trained on or are inappropriate. The proposal is for active patrolling.
- Expects the patrols to have a regular engagement with NPAs.
- The rollout would start as a pilot project, followed by review and expansion as appropriate.
- Comment / Caryn Long - Something like this has been tried and it was a good idea.

Richard Hillyard

- Agreed with Jane Knodell regarding policing as posted on FPF.
  - o Trash pickup – there are scalable examples in central NY State on how to handle trash and recyclables – it's a simple solution.

### **Appointment of Ward Representatives to Ad Hoc Committee on Redistricting**

Overview and Expectations – Tom Derenthal

- Tom discussed the Ad Hoc Committee. More information can be found here → <https://www.burlingtonvt.gov/sites/default/files/Agendas/SupportingDocuments/City%20of%20Burlington%20Ad%20Hoc%20Committee%20on%20Redistricting.pdf>

Nominations

- Richard Hillyard was nominated and appointed to represent W1 [unanimous decision]
- Keith Pillsbury nominated by Ann Brena but was disqualified due to being a prior school board member
- Anne Brena was nominated and appointed to represent W8 [unanimous decision]

### **Burlington's Capital Plan, November Ballot Items**

- Martha Keenan presented a short history and overview of the Burlington capital plan.
- The plan includes \$27.5M that will be on the Nov 2021 ballot.
- The complete presentation can be found here → [https://www.burlingtonvt.gov/sites/default/files/Agendas/SupportingDocuments/Continuing the City of Burlingtons Capital Infrastructure Plan 090821.pdf](https://www.burlingtonvt.gov/sites/default/files/Agendas/SupportingDocuments/Continuing%20the%20City%20of%20Burlingtons%20Capital%20Infrastructure%20Plan%20090821.pdf)

### **Addition, COTS Family Shelter at 278 Main Street**

- Bob Duncan presented the proposed addition to 278 Main St. The addition adds 16 permanent family units.
- The complete proposal can be found here →
  - o [https://www.burlingtonvt.gov/sites/default/files/Agendas/SupportingDocuments/278Main\\_210831\\_Perspectives.pdf](https://www.burlingtonvt.gov/sites/default/files/Agendas/SupportingDocuments/278Main_210831_Perspectives.pdf)
  - o [https://www.burlingtonvt.gov/sites/default/files/Agendas/SupportingDocuments/278Main\\_210831\\_Plans%26Elevation.pdf](https://www.burlingtonvt.gov/sites/default/files/Agendas/SupportingDocuments/278Main_210831_Plans%26Elevation.pdf)
  - o <https://www.burlingtonvt.gov/sites/default/files/Agendas/SupportingDocuments/210908%20COTS%20Facility%20Addition%20Electrical%20Site%20Photometric%20Plan.pdf>

### **City Council Reports**

#### **Councilor Jane Stromberg**

- Divestment of fossil fuel investments is being considered. The pension fund, controlled by the Retirement

board, currently has ~\$4.5M in these investments.

- Sex work resolution designed to decriminalize sex work passed CC unanimously.
- Divestment of nuclear weapon mfg'er investments is being considered.
  - o Waste Consolidation for residences with less than 4 units [single truck for trash / compost / recycling] is currently being debated. Options include a city or private hauler model, each with a possible opt out. This will be discussed at the Oct 27<sup>th</sup> meeting.

### **Councilor Jack Hanson**

- Policing / staffing levels – Council split the vote on increasing the uniformed officer cap. Community service roles [to address mental health calls] were approved.
- Burlington Electric – Is seeking money for infrastructure and to further net zero initiatives. Voter approval will be required.
- Legal resident voting resolution – expect to see Council address and if approved, will be a March 2022 ballot item. T
- New development – Parking requirements vs. sustainable transportation is being discussed. Expect the conversation to include the entire City [not just downtown].
- Re-appraisal – There was acknowledgement the re-appraisal could have gone better. Council is interested in making the process better. There may be potential relief for those with unexpected and unaffordable increases.

### **Councilor Zoraya Hightower**

- The second report on policing, this one from CNA, is due soon [maybe tonight].
- Emergency Council meeting has been called to address whether the Director of the Airport will be terminated.

### **Questions & Comments for City Councilors**

Richard Hillyard

- Questions regarding the Airport Director termination, and county-wide solutions for waste consolidation and social workers.

Jonathan Chapple-Sokol

- When will the public see the CNA report?
  - o Zoraya Hightower → Public safety committee will see first, then general public → maybe next week

Jack Hanson

- Crime statistics – Jack shared statistics on FPF. Those numbers aren't everything, but gives a look at high level crime.

### **School Commissioner Reports**

- Cancelled - No school commissioners were in attendance

Meeting adjourned at 9:02 PM



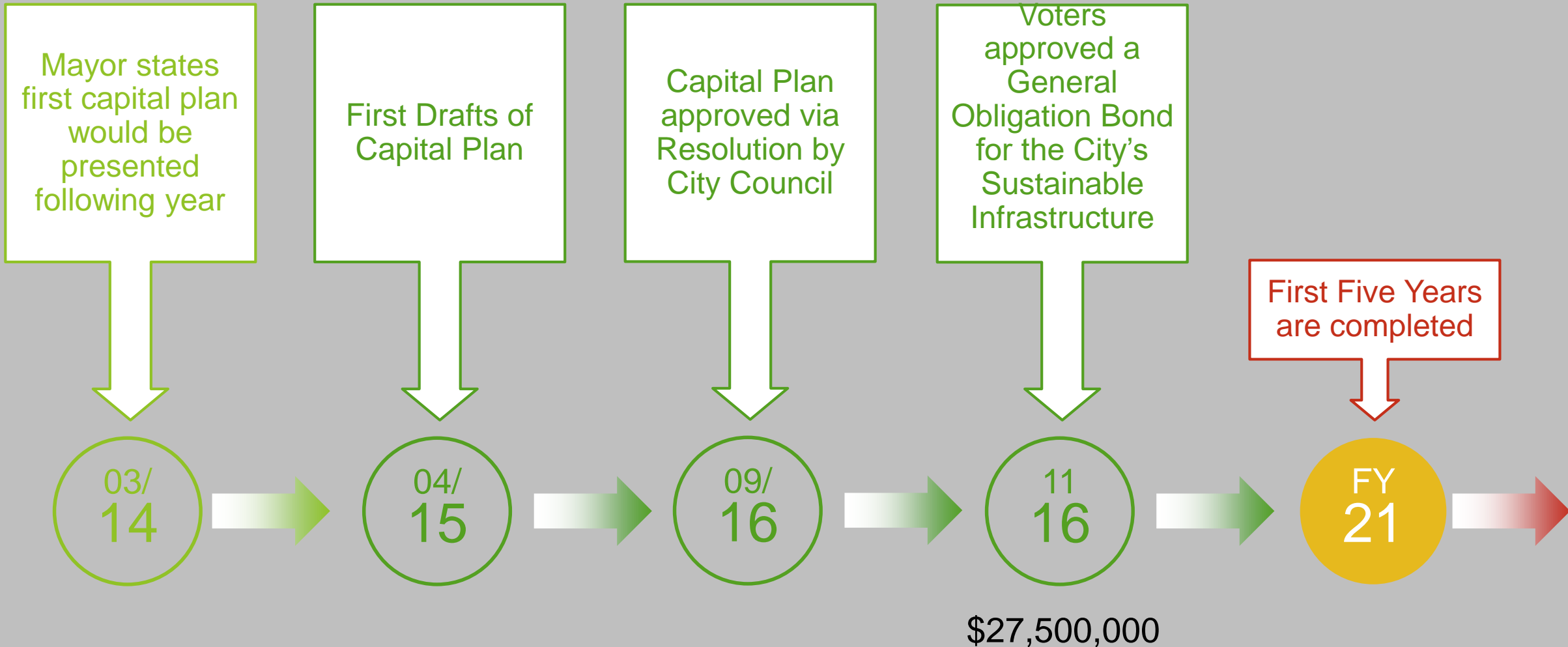
# Continuing the City of Burlington's Capital Infrastructure Plan

What have we accomplished?

What have we learned?

What are our next steps?

# History of the Capital Plan



# First Five Years are Completed

FY  
21

- ▶ The City has worked with:
  - ▶ all of the Departments,
  - ▶ the public and;
  - ▶ City Councilto reinvest in the City's infrastructure
- ▶ The work has touched all aspects of the City:
  - ▶ reinvigorating the Greenway
  - ▶ improving sidewalks and roads; and
  - ▶ renovating many of the municipal buildings
- ▶ Each project considers its impact on the City's NetZero Energy goal

# What have we accomplished?

- ▶ Improved over 14 miles of sidewalks
- ▶ Doubled our street reinvestment - From \$1M/year to \$2M/year
- ▶ Rehabilitated 7 miles (90%) of the bike path
- ▶ Created a new Parks Facilities maintenance building which helps keep our parks in better condition
- ▶ Improved multiple city building envelopes with insulation, new roofs, and new HVAC systems to improve efficiency and reduce costs
- ▶ Improved our IT infrastructure and the services we are able to provide to citizens - hybrid meeting system
- ▶ Implemented electronic door systems, improving security in city buildings
- ▶ Replaced the old city video security systems with a new single system tied to the city dispatch team
- ▶ Created an Asset Management Committee, implementing a software platform to better manage our assets and reduce costs
- ▶ Improved our plan to include more infrastructure for Public Safety
- ▶ Completed renovations at 645 Pine Street and City Hall to improve security and public services
- ▶ Created a Capital Committee to ensure best use of resources
- ▶ Set up and implemented a Fleet Committee to ensure move toward financial and environmental sustainability

# What have we learned?

- ▶ The Capital needs are evolving with the City
- ▶ Our initial understanding of our assets was not complete
- ▶ We have decades of deferred maintenance to catch up on
- ▶ Having an overall understanding of all the competing needs helps to prioritize and create better strategies
- ▶ The FY22 Budget survey showed strong support of our infrastructure
- ▶ The Infrastructure needs are over \$140M in the next three years
- ▶ Opportunities with the Federal Infrastructure Bill, ARPA and State funding will allow us to address many of the needs
- ▶ There is still a need beyond what the other opportunities represent
- ▶ The request of the voters will aid in filling the areas not covered by the above opportunities

# Continuing our Infrastructure Plan

## - Funding needs over 3 years

### Annual Investment:

- ▶ Sidewalk reinvestment - \$1,700,000
- ▶ Streets reinvestment - \$ 700,000
  - ▶ This is above & beyond the Street Capital annual tax allotment
- ▶ IT infrastructure - \$ 300,000
- ▶ Transportation Planning - \$ 460,000
- ▶ Capital Project mgmt. - \$ 800,000
- ▶ Facilities \$1,000,000
- ▶ Parks Projects - \$1,000,000
- ▶ Fleet - \$1,400,000
- ▶ Public Safety -

**Total annual need: \$7,360,000**

### Three Year Needs:

- ▶ \$5,100,000
- ▶ \$2,100,000
  - ▶ Street Capital funds \$1.6M/year for an overall investment of \$6M +
- ▶ \$ 900,000
- ▶ \$1,480,000
- ▶ \$2,400,000
- ▶ \$4,500,000
- ▶ \$3,000,000
- ▶ \$5,250,000
- ▶ \$5,700,000

**Three Year Request: \$30,330,000**

# Other Capital Needs

Numerous grant projects requiring a local match

Including:

- Railyard Enterprise
- Champlain Parkway
- Shelburne Street Roundabout
- Rail Re-alignment

Comprehensive Plans to implement

Including:

- Bike Ped Master plan
- Parks Master plan
- Scoping and Corridor Studies

Large revisioning projects to consider (not included in three year plan)

Including:

- Fletcher Free Library
- Fire Station Consolidation
- Consolidated Collection

Operational and maintenance needs to keep up with Capital Improvements

Including:

- Pavement markings
- Landscaping
- Facility maintenance

# What are our next steps?

## Present the next three year Capital Plan (FY'22 - FY'24)

- ▶ Meet with Commissions and Wards July, August, September & October
- ▶ Meet with Board of Finance and City Council September 13th
- ▶ September approval from City Council to bring request to the voters
- ▶ November 9<sup>th</sup> Special election
- ▶ Prioritize our needs

# What are our next steps?

Strategize to utilize all funding opportunities as they come available

- ▶ ARPA funds
- ▶ State Infrastructure Funds
- ▶ State Climate Change Funds
- ▶ Federal Infrastructure Bill

Work to build an understanding of what a sustainable Capital Plan is and what it will entail to maintain

# Considerations

Debt Policy Cap

Other Funding Opportunities

Request a new  
General Obligation  
bond in November  
to Voters

Strategy to create a  
sustainable plan to  
maintain a vibrant  
downtown

The longer repairs  
are deferred, the  
more it will cost.

# Schedule

## July:

- ▶ 21<sup>st</sup> - DPW commission - introduction
- ▶ 21<sup>st</sup> - Library commission
- ▶ 27<sup>th</sup> - Police Commission
- ▶ 27<sup>th</sup> - TEUC

## August:

- ▶ 1<sup>st</sup> - Parks commission
- ▶ 3<sup>rd</sup> - Fire commission
- ▶ 17<sup>th</sup> - TEUC
- ▶ 31<sup>st</sup> - TCV

## September

- ▶ 2<sup>nd</sup>: Ward 6 NPA
- ▶ 8<sup>th</sup> - Wards 1 & 8 NPAs
- ▶ 9<sup>th</sup> - Ward 6
- ▶ 13<sup>th</sup> - Board of Finance & City Council
- ▶ 16<sup>th</sup> - Ward 5 NPA

## November:

- ▶ 9<sup>th</sup> - potential special election



Questions?



**Wards 1 & 8 Neighborhood Planning Assembly (NPA)  
September 8, 2021 7:00-9:00PM  
Hybrid Meeting**

**Zoom** – please click the link below to join the webinar

<https://us02web.zoom.us/j/84036123619>

Telephone:

US: +1 929 205 6099

Webinar ID: 840 3612 3619

International numbers available: <https://us02web.zoom.us/j/84036123619>

**YouTube Livestream** – NPA Wards 1&8 Playlist, click on upcoming/next meeting:

[https://youtube.com/playlist?list=PLIjLFn4BZd2Pa3H8I30gy\\_gZ3NL6orXcN](https://youtube.com/playlist?list=PLIjLFn4BZd2Pa3H8I30gy_gZ3NL6orXcN)

***Note:** This is for live streaming purposes only. Ward residents should participate via Zoom or in person if they wish to vote or speak*

**In Person – Sharon Bushor Room, Burlington City Hall, 149 Church Street, Burlington, VT 05401**

We will determine who from our Wards will serve on the Ad Hoc Committee on Redistricting at this meeting. Please note the rearrangement of our traditional agenda to get this important work done.

**Agenda –**

- 7:00PM Announcements, Introductions
- 7:05PM Speakout
- 7:15PM Appointment of Ward representatives to Ad Hoc Committee on Redistricting  
Overview and Expectations – Tom Derenthal  
'Self-nominations' and nominations  
Nominee introductions and statements with NPA Q&A  
Election
- 7:45PM Burlington's Capital Plan, November Ballot Items – Martha Keenan, Capital & Special Projects Director, Clerk & Treasurer's Office
- 8:10PM Addition, COTS Family Shelter at 278 Main Street – Bob Duncan, Duncan Wisniewski Architecture
- 8:25PM City Council Reports
- 8:50PM School Commissioner Reports
- 9:00PM Adjourn