



# Ward 8 Neighborhood Planning Assembly

May 28, 2026 | 6:15 - 7:40pm

**Join in-person**  
City Hall, 149 Church Street  
Sharon Bushor Room

**Join online**  
[zoom.us/j/91523077007](https://zoom.us/j/91523077007)

**Facilitator:** Tom Carroll  
**Notetaker:** Amy Malinowski

- 6:15pm** 15 min **Welcome & food**  
Pizza (vegetarian, vegan, and gluten free options)
- 6:30pm** 10 min **Opening & Speak out (2 min per person)**  
Welcome. Review today’s agenda and meeting practices. Introduce yourself, share announcements (events, meetings, activities of interest), and speak out about anything relevant to our Ward 8 community—raise concerns, sing out appreciations, etc.
- 6:40pm** 15 min **VOTE: Budget proposal**  
Vote on spending of balance of 2025-2026 NPA funds (\$2,401.84). Steering Committee suggests spending:  
  - (a) Our contribution to zine renewal | \$100
  - (b) NPA Organizing & Outreach Intern(s) | \$2,301.84 for 2025-2026 & up to \$1000 for 2026-2027

NPA budgets must be used for: promoting the NPA, providing residents with information about city programs/activities, and/or gathering input from residents about city needs. Budget expenditures are approved by a 2/3 vote of Ward 8 residents present.
- 6:55pm** 20 min **Updates from Department of Public Works**  
Robert Goulding, Chapin Spencer  
A presentation about DPW’s 2026 construction workplan as well as previews of the end of the Champlain Parkway project and Main Street project.
- 7:15pm** 25 min **Concerns about the McNeil Plant**  
Lisa Lax, Peter Macausland  
This is a presentation about the McNeil Plant in Burlington by the Chittenden Node of 350Vermont and Stop VT Biomass.
- 7:40pm** **Closing**

## What to expect at this month’s meeting:



Wheelchair accessible via ramp from the street.



Closed Captions available on Zoom. No ASL interpreter or CART is planned. Email a request 2-4 weeks in advance.



Bathroom available on same floor and is ADA accessible.



No live language translation or document translation is planned. Email a request 2-4 weeks in advance.



Masks not required, but free at door. Air filtration & ventilation unknown.



Low or no fragrance not required of attendees.



No childcare (though children are welcome).



[View parking options and bus routes.](#)

[bit.ly/ward\\_8\\_npa](https://bit.ly/ward_8_npa) → email the steering committee • watch meeting recordings • propose agenda topics • sign up for email reminders

# Purpose, principles, and practices to guide us:

## Practices

We collectively help each other **honor the agenda** focus and time containers. (But if needed, the facilitator will redirect activity.)

We are collectively responsible for cultivating a posture of **curiosity** when listening. We support each other in speaking honestly and directly, while holding compassion.

We will **prioritize the voices of those living in our ward** as well as those who have not yet spoken.

We allow each other space to **speak in "rough draft."** (But if needed, say "oops" or "ouch.")

## Principles

### Practice deep democracy

The Ward 8 NPA should provide a safe and welcoming forum where residents can actively share their voice about issues that matter to them, and where they can learn from the voices of others.

### Nourish difference & diversity

The Ward 8 NPA should cultivate involvement by a diverse spectrum of community members through active outreach and through eliminating barriers to participation. The Ward 8 NPA should be operated in a manner that models respectful, inclusive, culturally and economically aware practices.

### Grow each other

The Ward 8 NPA should be fun, creative, and vital organizations that value & benefit through the multitude of perspectives shared by those who participate.

## Purpose

- ◆ Help provide residents with information concerning city programs and activities.
- ◆ Help obtain resident views of city needs.
- ◆ Help provide residents with an opportunity to participate in making recommendations with respect to the city budget.
- ◆ Maintain and enhance the quality of life in in our ward.
- ◆ Ensure that the voices of Ward 8 residents are heard in all matters pertaining to life therein.
- ◆ Provide a vehicle for residents of Wards 8 to collectively act.

## Let's collaborate!



### Contact the steering committee

Reach out to the steering committee by emailing: [ward-8-sc@googlegroups.com](mailto:ward-8-sc@googlegroups.com)



### Propose an agenda item

Please fill out the NPA request form at least 2-4 weeks before you would like to present. [www.burlingtonvt.gov/221/NPA-Request-Form](http://www.burlingtonvt.gov/221/NPA-Request-Form)

### Current steering committee:

Tom Carroll  
Amy Malinowski

# Who represents Ward 8?

## CITY

### **MAYOR, BURLINGTON**

**Emma Mulvaney-Stanak**

Progressive | term ends XXXX

mayor@burlingtonvt.gov | (802) 865-7272

### **CITY COUNCILOR, WARD 8**

**Marek Broderick**

Progressive | term ends 2026

mbroderick@burlingtonvt.gov | (802) 488-5134

### **CITY COUNCILOR, EAST DISTRICT**

**Allie Schachter**

Democrat | term ends 2027

aschachter@burlingtonvt.gov | (802) 448-4227

## STATE

### **REPRESENTATIVE, CHITTENDEN 14**

**Barbara Rachelson**

Democrat | term ends 2027

brachelson@leg.state.vt.us | (802) 828-2228

### **REPRESENTATIVE, CHITTENDEN 14**

**Mary-Katherine Stone**

Democrat | term ends 2027

mstone@leg.state.vt.us | (802) 828-2228

### **REPRESENTATIVE, CHITTENDEN 15**

**Brian Cina**

Progressive/Democrat | term ends 2027

bcina@leg.state.vt.us | (802) 828-2228

### **REPRESENTATIVE, CHITTENDEN 15**

**Troy Headrick**

Independent | term ends 2027

theadrick@leg.state.vt.us | (802) 828-2228

### **REPRESENTATIVE, CHITTENDEN 16**

**Jill Krowinski**

Democrat | term ends 2027

jkrowinski@leg.state.vt.us | (802) 828-2228

## FEDERAL

### **SENATOR, VERMONT**

**Bernie Sanders**

Independent | term ends 2030

sanders.senate.gov/contact | (202) 224-5141

### **SENATOR, VERMONT**

**Peter Welch**

Democrat | term ends 2028

welch.senate.gov/email-peter | (202) 224-4242

### **SCHOOL BOARD, WARD 8**

**Bill Church**

term ends 2026

bchurch@bsdvt.org | (802) 922-0432

### **SCHOOL BOARD, EAST DISTRICT**

**Matthew Price**

term ends 2027

mprice@bsdvt.org | (802) 735-6058

### **REPRESENTATIVE, CHITTENDEN 16**

**Kate Logan**

Progressive/Democrat | term ends 2027

klogan@leg.state.vt.us | (802) 828-2228

### **SENATOR, CHITTENDEN CENTRAL**

**Philip Baruth**

Democrat/Progressive | term ends 2027

pbaruth@leg.state.vt.us | (802) 503-5266

### **SENATOR, CHITTENDEN CENTRAL**

**Martine Larocque Gulick**

Democrat | term ends 2027

mgulick@leg.state.vt.us | (802) 828-2228

### **SENATOR, CHITTENDEN CENTRAL**

**Tanya Vyhovsky**

Progressive/Democrat | term ends 2027

tvyhovsky@leg.state.vt.us | (802) 828-2228

### **GOVERNOR, VERMONT**

**Phil Scott**

Republican | term ends 2027

vermontce.my.vermont.gov/s/governor-office-ce  
(802) 828-3333

### **REPRESENTATIVE, VERMONT**

**Becca Balint**

Democrat | term ends 2026

balint.house.gov/contact | (202) 225-4115

Icon attribution:

[accessibleicon.org/](https://accessibleicon.org/)

[thenounproject.com/icon/shampoo-8152184/](https://thenounproject.com/icon/shampoo-8152184/)

[thenounproject.com/icon/rubber-duck-6285851/](https://thenounproject.com/icon/rubber-duck-6285851/)

[thenounproject.com/icon/translator-6951307/](https://thenounproject.com/icon/translator-6951307/)

[thenounproject.com/icon/bus-school-2206806/](https://thenounproject.com/icon/bus-school-2206806/)

[thenounproject.com/icon/covid-protection-5497318/](https://thenounproject.com/icon/covid-protection-5497318/)

[thenounproject.com/icon/toilet-1581214/](https://thenounproject.com/icon/toilet-1581214/)



## WARD 8 NPA ORGANIZING & OUTREACH INTERN

Responsible for assisting the Ward 8 Neighborhood Planning Assembly (NPA) Steering Committee with promoting NPA engagement, especially among college students and young renters who make up a large percentage of the Ward. The internship is a part-time, paid position that will work closely with the Ward 8 NPA Steering Committee and the City's NPA Public Engagement Specialist to develop a NPA engagement strategy and plan to be rolled out in Fall 2026 that would identify ways for the ward 8 NPA to reach the full diversity of our community. This could include identifying outreach and storytelling strategies, researching and networking with potential community and campus partners, and planning a Fall campaign of events and experiments. This opportunity is well-suited for a creative individual who is interested in civic engagement, local democracy, and community organizing!

### Internship Learning Outcomes

- Strengthen ability to communicate effectively with diverse audiences.
- Develop skills in project management, event planning, strategic communications, and community organizing.
- Learn how to build relationships with allies, partner organizations, and members of the public to further community engagement efforts.
- Deepen understanding of municipal government and local democracy in Burlington.

### Work Schedule & Pay

We anticipate a flexible summer schedule of around 10-14 hours per week, not including holidays and weekends (though weekend events may be planned at the discretion of the NPA Steering Committee and the intern). Tentative duration of internship: 4 weeks, June 1 – June 30, 2026 (with the possibility of extending into July and August). Pay would be \$19.90 / hr and you will use a phone app to track your hours.

### Essential Job Functions

*Burlington's Neighborhood Planning Assemblies (NPAs) were established in 1982 with the intent to de-centralize City government and ensure regular people can have a voice in the decisions that affect their lives. Every resident is automatically a member of their Ward's NPA. Monthly NPA meetings in each Ward keep residents up-to-date on local issues and provide a structured forum for sharing their questions, concerns, and hopes. Within the NPA, residents are able to collectively organize and advocate for neighborhood interests, while strengthening neighborhood social connections over conversation and community meals. The Ward 8 NPA covers a student-heavy area but struggles to engage with the many students and young renters that make up the neighborhood. The Ward 8 NPA will not be meeting during the months of June/July/August and the Steering Committee will instead be using this season to focus on re-imagining the Ward 8 NPA to be more inclusive of the full diversity of our ward alongside the Organizing & Outreach Intern. As a Steering Committee, we are undertaking this work with the following intentions: (a) really listening to our neighbors and letting what emerges guide us, (b) dreaming big AND finding the next small experiment we can do and learn from together, and (c) moving at the speed of relationships and trust.*

This is a unique internship opportunity that can go in different directions based on the intern's interests/skills and the needs of the Steering Committee. During the first days of the internship, the intern and Steering Committee will work together to design a scope of work that makes sense for both parties. Tasks may include:

- Developing and implementing an outreach campaign to engage different Ward 8 constituencies, such as students, renters, and long-term Ward 8 residents; helping the Ward 8 NPA Steering Committee plan and prepare for a Fall 2026 campaign of events and outreach experiments
- Support with the development of a map and outreach tracker for potential community and campus partners (professors, staff, clubs, community organizations, etc).
- Support with the completion of a 'potential meeting locations' identification, research, and prioritization spreadsheet.
- Analyzing ward resident & property data to identify opportunities for strategic outreach.
- Creating outreach materials (educational/promotional) such as flyers, graphics, and postcards.
- Tabling and door-to-door canvassing to engage residents about the Ward 8 NPA.
- Planning and hosting community events.
- Developing other neighborhood-based projects that highlight Ward 8's past & present.

## **Suggested Qualifications**

- Curious, generous listener, willing to question the status-quo, and capable of imagining an abundance of possible experiments we might try
- Comfort moving between strategizing big picture and attending to small details of a project
- Familiarity with the Ward 8 community, the UVM/Champlain College communities, and issues that affect Ward 8 residents.
- Demonstrated interest in civic engagement, democracy, local activism, and/or community organizing (e.g. through related coursework or extracurricular activities).
- Strong verbal and written communication skills required.
- Able to work independently and exercise independent judgement.
- Able to collaborate effectively with a team through regular check-ins and maintaining work in shared digital collaboration tools
- Interest (or experience) developing and creating basic outreach materials (e.g. flyers, graphics, postcards).



# DPW: 2026 CONSTRUCTION

---

*Our Mission is to steward Burlington's infrastructure and environment by delivering efficient, effective, and equitable public services.*

**Chapin Spencer, Director**

**[Cspencer@burlingtonvt.gov](mailto:Cspencer@burlingtonvt.gov)/802-863-9094**

**Robert Goulding, Public Information Manager**

**[RGoulding@burlingtonvt.gov](mailto:RGoulding@burlingtonvt.gov)/802-881-2278**

# WRAPPING UP TWO MAJOR PROJECTS

---



Main Street & the Champlain Parkway are both anticipated to wrap up in early summer.

Both projects are on-time, and on-budget.

These projects are unlocking the potential for additional housing & commerce while providing enhanced infrastructure for residents

# CHAMPLAIN PARKWAY

- 25MPH road
- Connects South End with Downtown
- Stormwater improvements
- Pedestrian enhancements: signals, shorter crossings, new sidewalks



# WHAT'S LEFT TO DO

## (tentative schedules below)

### Pine Street

- Roadway sign installation
- Signal activation (week of May 4)
- Pavement (Main Street) and sidewalk repairs (misc. along Pine) (upcoming weeks)
- General clean up

### Champlain Parkway

- Overhead signs
- Roadway signs
- Final Pavement
- Line striping
- Signal timing adjustments

# MAIN STREET

- A welcoming gateway into Vermont's Queen City
- Wider sidewalks for pedestrians & commerce
- More trees & gardens
- Enhanced lighting
- Abandonment of ravine sewer

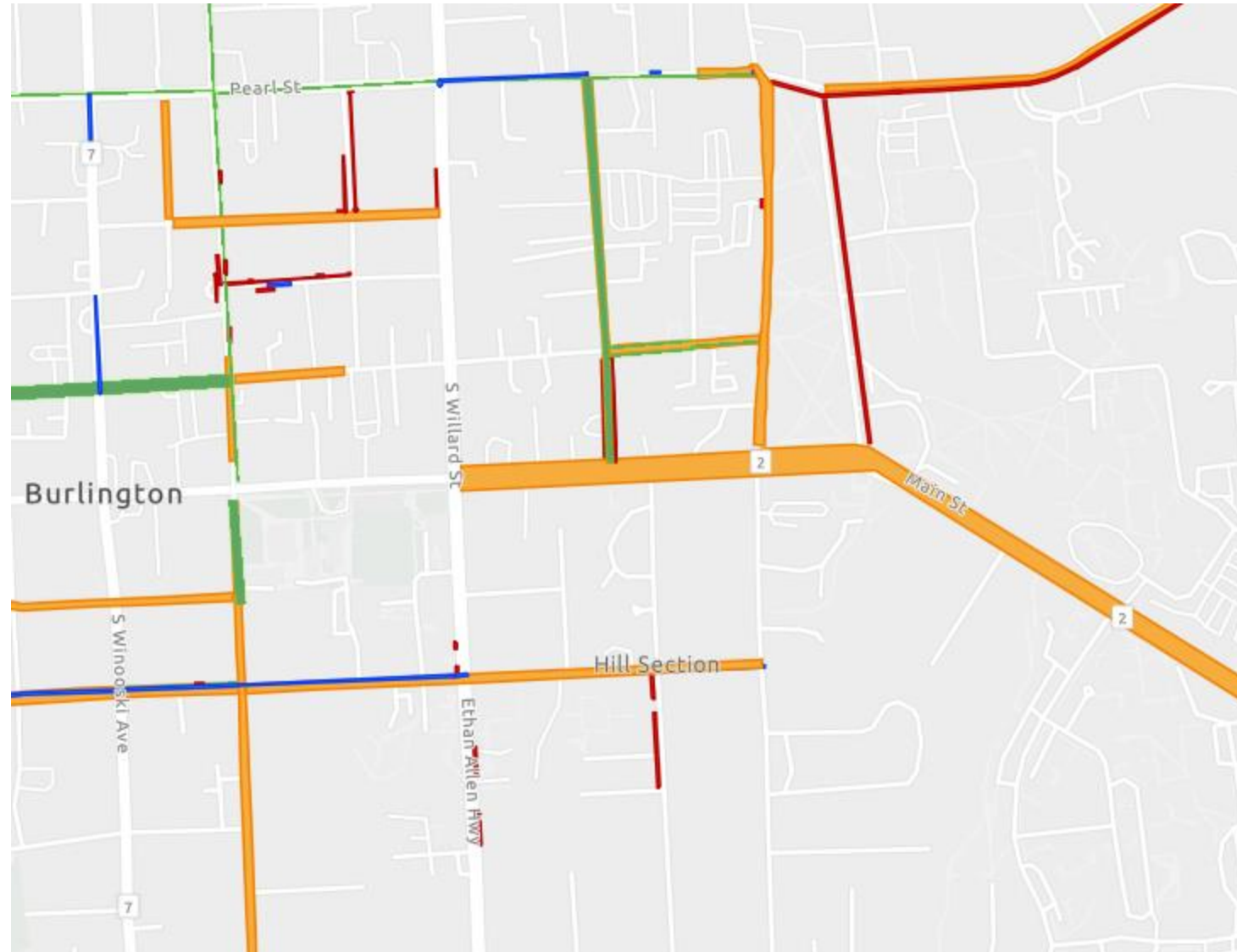


# WHAT'S LEFT TO DO

- Sidewalks
- Signals
- Tree plantings
- Paving
- Public Art



# A decade of work in Ward 8



- \*Paving in orange
- \*Sidewalk in red

# Town Meeting Day 2025



## 3 ballot questions for sustainable & affordable capital investments

		
<b>\$20 million</b>	<b>\$20 million</b>	<b>\$152 million</b>
General Obligation (GO) bond to support needed investments in public safety vehicles, streets and sidewalks, city buildings, and parks.	WATER bond will shore up critical parts of our drinking water supply network.	LAKE bond funds a major and generational overhaul of the Main Wastewater Treatment Plant.

# SIDEWALKS

---

The season has started!

\$1.65M contract + additional work with in-house crew

3.1 miles planned overall – hitting our annual target

Contract largely funded by 2025 Town Meeting Day



# SIDEWALKS: developing a workplan

---

- Developed using the City's 2021 citywide sidewalk inventory
- Prioritizes based on utilization, location, and sidewalk condition.
- Location considers the sidewalk's proximity to schools, neighborhood activity centers, employment centers, etc.
- Resident requests, field inspections, and coordination with other City projects.



# SIDEWALKS\*\*

Street	Limits
N Willard St	Archibald St - North St (East Side)
Wildwood Dr	All*
Woodlawn Rd	All*
N Willard St	North St - Henry St (East Side)
Holly Ln	East Side
St Paul St	Crosswalk enhancement
North/Blodgett	New crosswalk
Pearl/George	Crosswalk enhancement
Union/Bradley	New crosswalk

\*\*Short run segments not included above

# PAVING

---



Asphalt plants are open!  
\$1.7M contract + remaining work from CY  
25  
Total ~3.5 miles planned for the year  
Largely funded by 2025 TMD Bond  
Larger workplan being developed for

# PAVING: developing a workplan

## BACKGROUND

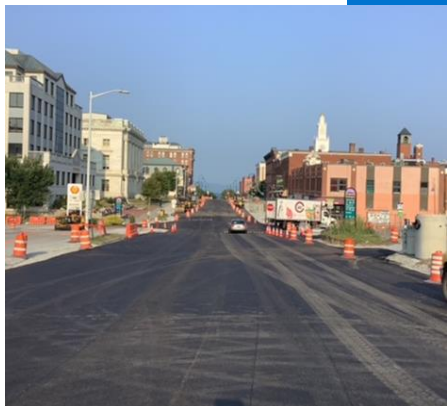
- Street network consists of over 96 miles of streets.
- Classified as Primary/Arterial, Secondary/Collector and Tertiary/Residential.
- Each street type has different anticipated lifespan generally based on average daily traffic volumes.
- In order to keep pace with the anticipated lifespan of the Burlington Street network, minimum target is 4 miles/year.

## PRIORITIZATION

- Funding, street condition, street type/traffic volume, nearby projects and resident requests

## HEADWINDS

While this year we had our most competitive bid environment in awhile, inflation & fuel prices may eat into available construction funding



# PAVING\*



<u>Street</u>	<u>Limits</u>	<u>Length (miles)</u>
<b>Colchester Avenue</b>	S. Prospect-Latham Ct	~0.46
<b>Cumberland Road</b>	Entire Street	~0.30
<b>Greene Street</b>	Loomis St-Hickok Pl	~0.11
<b>Park Street</b>	North St-Sherman St	~0.17
<b>Summer Street</b>	Entire Street	~0.05
<b>Saratoga Avenue</b>	Entire Street	~0.35
<b>Rivermount Terrace</b>	Entire Street	~0.30
<b>Bennington Court</b>	Entire Street	~0.05
<b>Scarff Avenue</b>	Shelburne St-Wells St	~0.10
<b>Depot Street</b>	Entire Street	~0.21

## Remaining 2025 contract streets

<b>College</b>	Union - Willard
<b>Pearl</b>	Battery - Winooski

\*Includes patches on lower North Ave, Lake St, Archibald St, Intervale Rd



# WATER WORKS!

## Wastewater Treatment Plant Upgrades

- Stage 0 remains on target for completion this summer/fall. This is a major first step to begin comprehensive upgrades funded by 2025 TMD bond
- Screening & grit equipment being installed at all 3 plants

## Water main improvement project

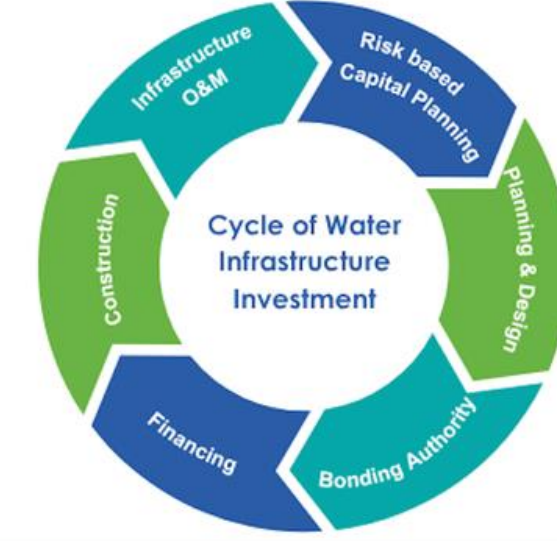
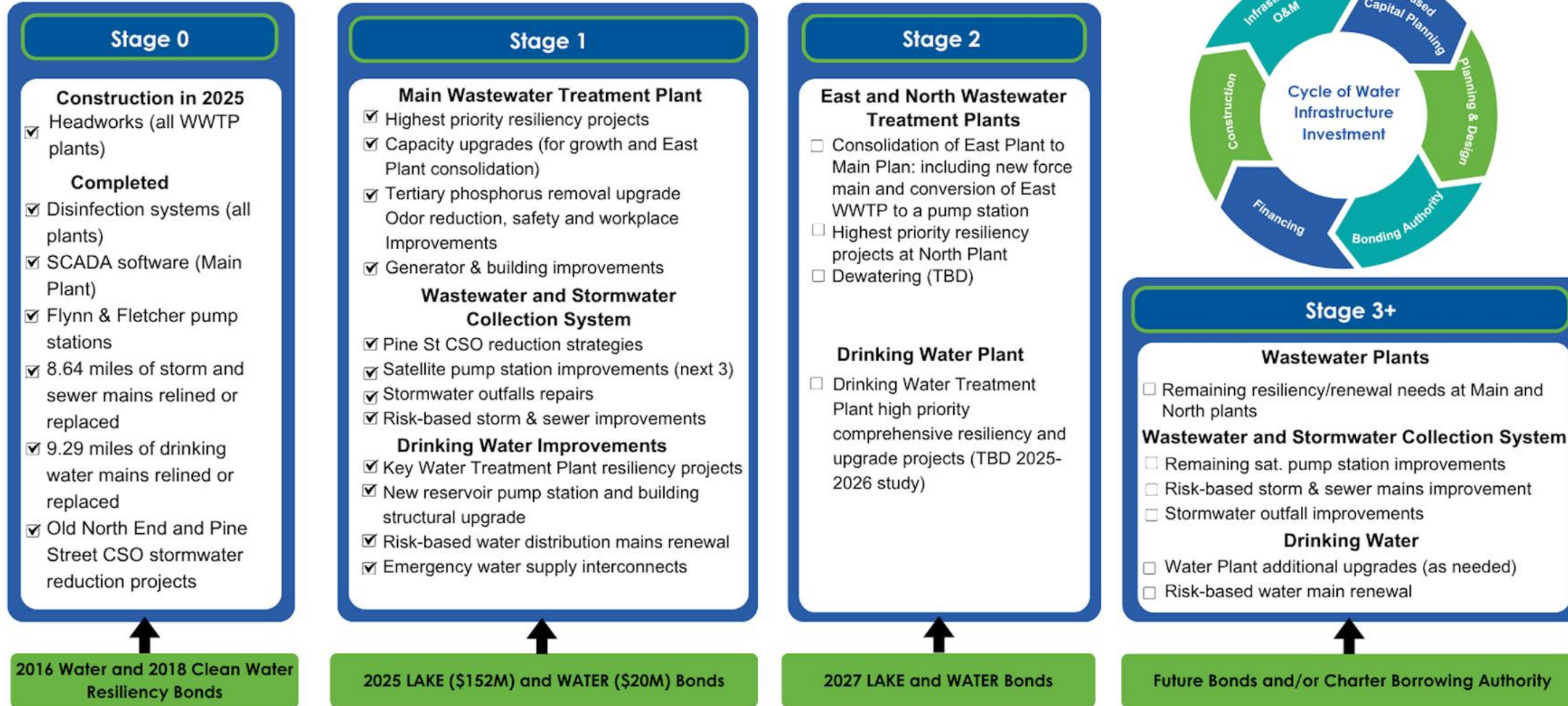
- Includes: Pine St (from S Crest to Home Ave), Summit St (Maple to Main), and all of Bennington Court (coordinated with paving)

**Manhattan Ave Stormwater Outfall:** late summer/early fall

# Water Resources

## Sustainable Infrastructure Plan: The 2025 LAKE & WATER bonds

How does this phase of investment fit in with the overall plan?



# WHAT YOU CAN DO FOR WATER:



ABOUT US | OUR PROGRAMS | OUR PRIORITIES | RESEARCH | NEWS | EVENTS | RESOURCES |



## BLUE Stormwater Program

**What is BLUE?** Lake Champlain Sea Grant is part of BLUE BTV, a residential green stormwater infrastructure incentive program in Burlington, Vermont. BLUE evaluators educate and collaborate with residents to identify opportunities for stormwater mitigation, affect behavioral changes, and establish stewardship principles to protect our waters from cyanobacteria blooms.

### Green Stormwater Infrastructure

<https://seagrant.w3.uvm.edu/blue/>

<https://vt.adopt-a-drain.org/>

How to Adopt A Storm Drain | Drain Clearing Tips | Track Impact



## We protect our water

Sweep up! Rake up! Pick up!

Adopt a Drain



# STAY INFORMED STAY IN TOUCH

## Maintenance Requests



See Click Fix:  
[burlingtonvt.gov/dpw](http://burlingtonvt.gov/dpw)

## Construction Impacts



- Front Porch Forum
- Signage
- VT-Alert:  
[burlingtonvt.gov/  
construction](http://burlingtonvt.gov/construction)

## Customer Service



802-863-9094

[dpw-pinecustomerservice  
@burlingtonvt.gov](mailto:dpw-pinecustomerservice@burlingtonvt.gov)



**THANK YOU**

# Burlington's McNeil Plant:

## A CASE FOR CLOSURE

A presentation to Burlington's NPAs  
By 350 Vermont's Chittenden Node & Stop VT Biomass



SPRING 2026



**Bill McKibben**

@billmckibben



Burning wood for electricity is a bad idea--the science has changed a lot since Burlington started doing it decades ago. It makes sense to phase it out, not incentivize it



vtdigger.org

Nick Persampieri: Burlington, please vote no on Question ...

The city draws a false contrast between fossil fuels and renewables. Some renewables, such as solar, wind and ...

11:07 AM · Mar 6, 2023 · **7,786** Views

**18** Retweets   **10** Quotes   **57** Likes   **1** Bookmark

# McNeil Plant Basics

- Commenced operation **June 1984**
- Located in **Burlington's Intervale**
- **Burns wood** to generate electricity
- 50 MW (**largest electricity generator in Vermont**)
- Jointly owned by Burlington Electric Department (BED) (operator and 50% owner), Green Mountain Power (31%) and Vermont Public Power Supply Authority (19%)
- Provides **32–45% of BEDs total power supply** (FY 2015–2023).

# The Case Against McNeil Plant

- **Largest stationary source of greenhouse gas emissions in VT**
- **Harmful to health** – particulate matter and other pollutants which leads to or exacerbates health conditions
- **Negative impact on forest ecosystems** and the benefits they provide.
- It **costs a lot**– the power it produces is expensive.
- It's **old** and **inefficient**

# McNeil's Greenhouse Gas Emissions

**“Burning wood to generate electricity emits more carbon dioxide per kilowatt-hour generated than fossil fuels– even coal, the most carbon intensive fuel.”**

*–John Sterman, William Moomaw, Juliette N. Rooney-Varga & Lori Siegel, Does wood bioenergy help or harm the climate?, Bulletin of the Atomic Scientists, Vol 78, No. 3 (2022) 130.*

**McNeil emitted 316,405 tons of CO<sub>2</sub> in 2025 (EPA). It also emits lesser amounts of the greenhouse gases methane and nitrous oxide. Fossil-fuel powered equipment and vehicles used to pull wood feedstock from the forests and transport it to the plant emits additional greenhouse gases.**

# The Carbon Neutrality Myth

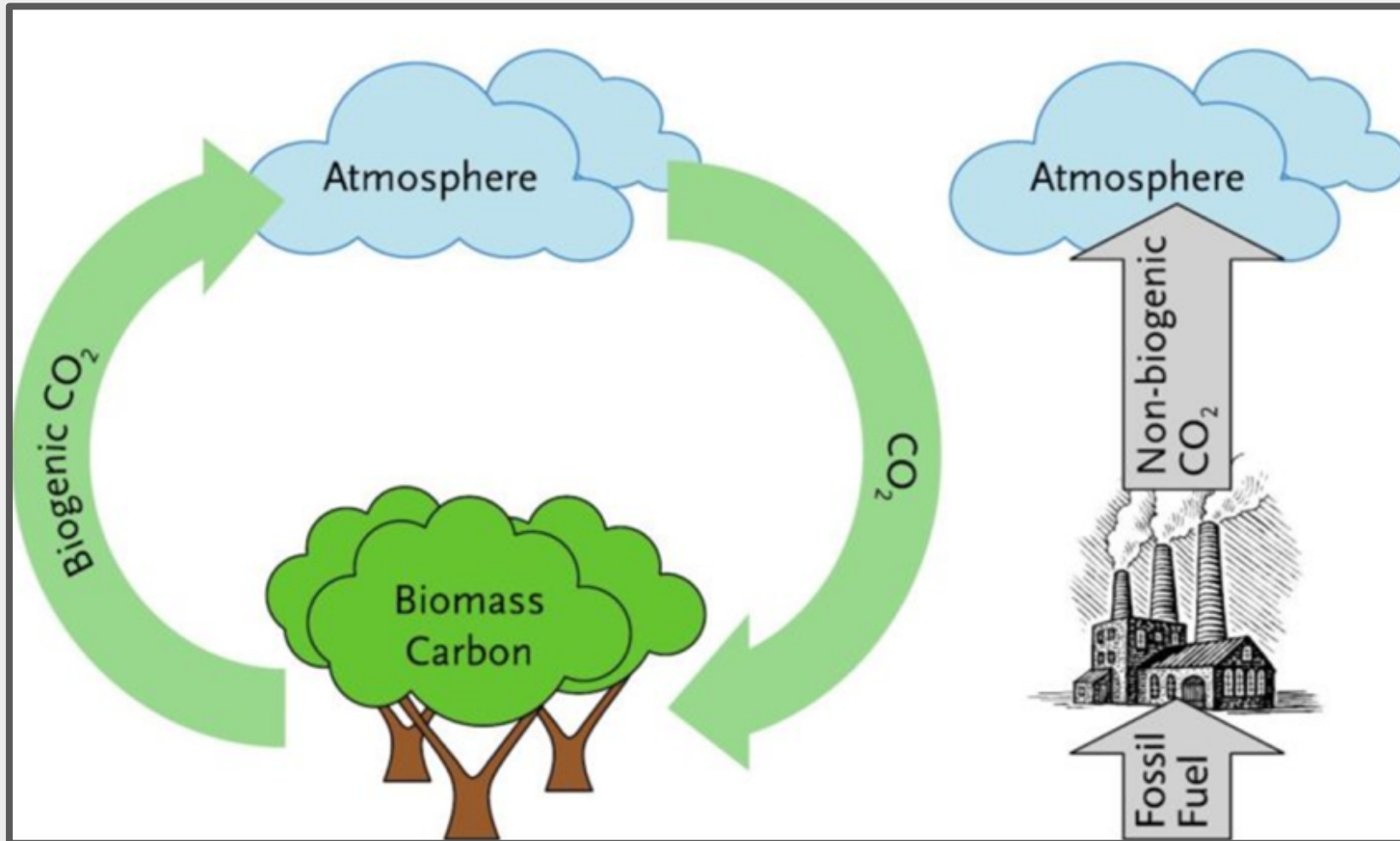
BED claims that McNeil is carbon neutral because BED engages in sustainable forestry and the carbon dioxide emissions from its stack are re-sequestered by trees as they regrow.

This is a myth. When trees are burned the carbon dioxide is released immediately creating a carbon debt which takes decades to centuries to eliminate through tree regrowth.

Also, regrowth is uncertain. Harvested areas may be converted to other land uses or trees may succumb to insects, disease or drought.

*John Sterman, et al.; EU Bioenergy, Bioenergy Accelerates Climate Change,*  
<https://www.eubioenergy.com/the-5-issues/it-accelerates-climate-change/>

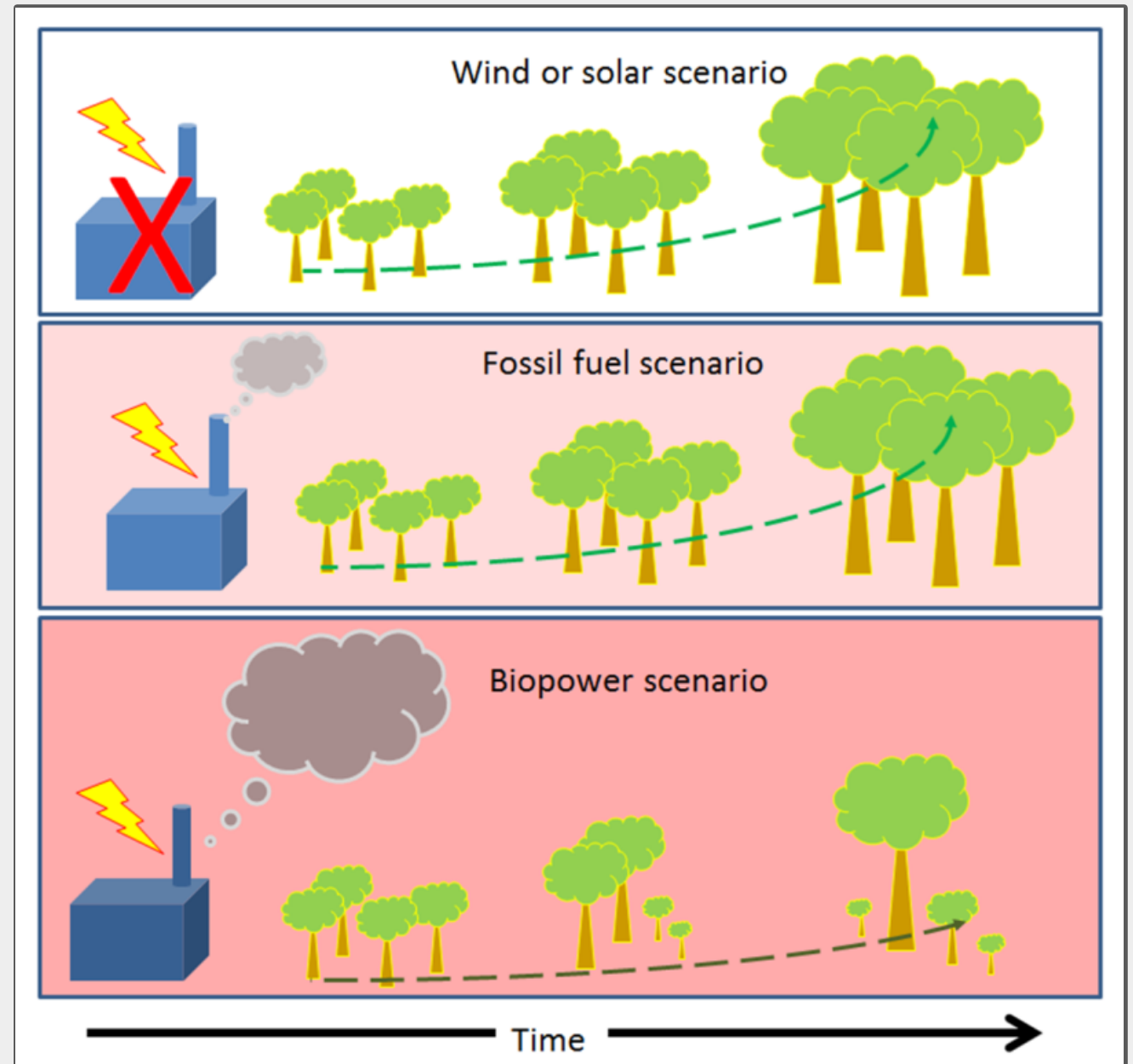
# Theory (according to BED): “Closed Loop” Carbon Cycle



# Reality:

**Wood burning power plants emit more CO<sub>2</sub> per unit energy** and also degrade the forest carbon sink.

The result is higher atmospheric CO<sub>2</sub> concentrations.



# Ecological Harm

- Burlington Electric claims: “McNeil’s wood supply is primarily 88.4% in-woods chips/residues **such as** the tops and limbs left over from higher-value wood products, with an additional 9.7% from sawmill residue and 1.6% from waste-wood yard wood.” (Bold added)

- *McNeil, Climate and Forestry, BED website.*

- The reality: McNeil’s burns “Whole Tree Chips,” which include chips generated by cutting down and chipping whole trees.

-PUC Dkt. No. 4450, Certificate of Public Good for McNeil, 9/14/81 § 87; 6/22/83 Order Amending Certificate of Public Good.

- **The plant burns 400,000 tons of woodchips per year**

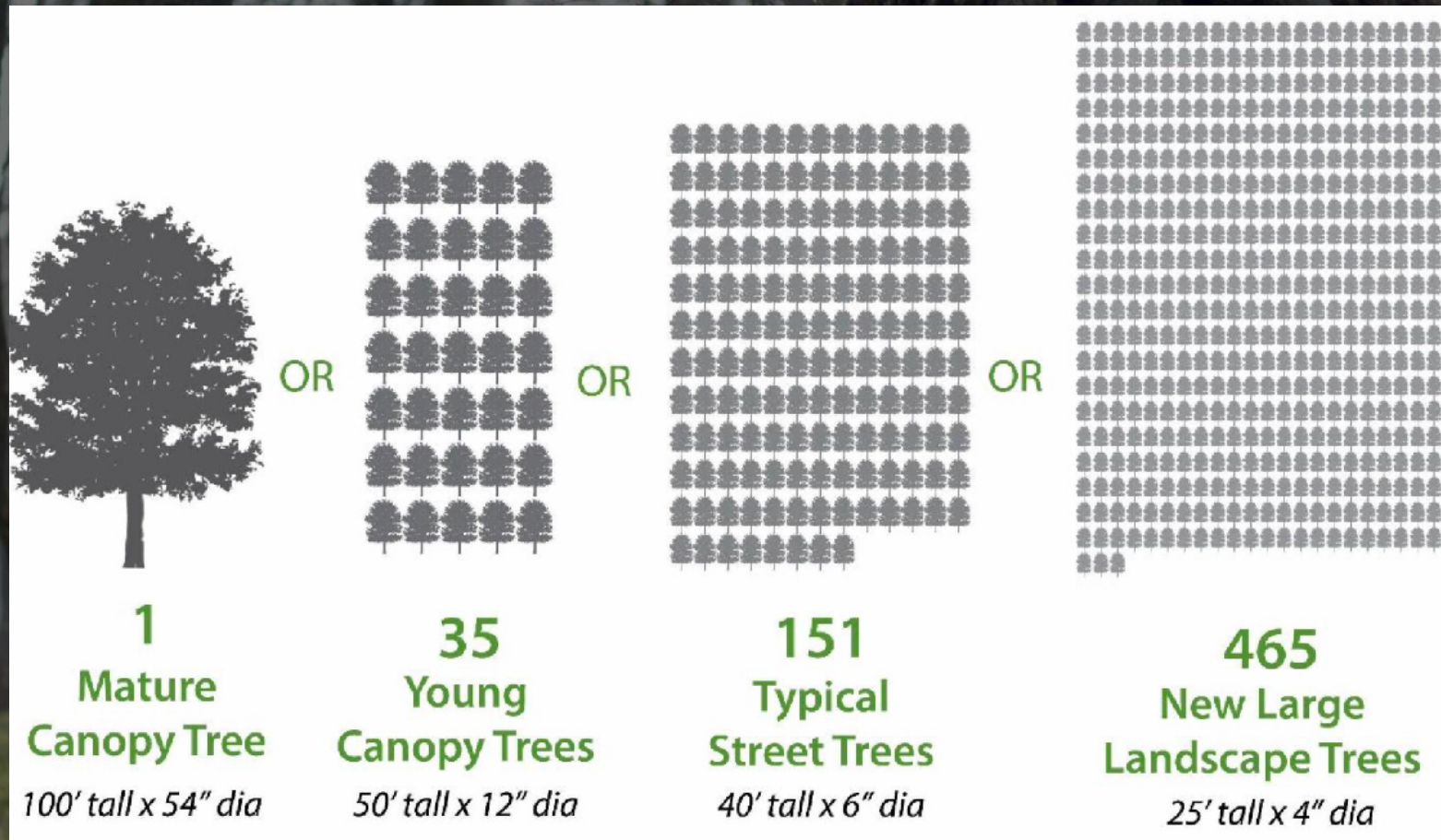
-*April 29, 2022 VEIC Summary Memorandum.*



**This impairs forest ecosystems and erodes important benefits forests provide, including flood protection, & has a destructive impact on forest ecology and wildlife.**

# Carbon Rock Stars: Large, Older Trees & Forests

How many oak trees does it take to store 8 tons of carbon?





# Human Health

McNeil emits **particulate matter, nitrogen oxides, sulfur dioxide, volatile organic compounds, including benzene and formaldehyde,** and other **pollutants which are known to be harmful to human health.**

McNeil releases these pollutants in proximity to racially diverse, low and middle-income neighborhoods of Burlington's Old North End and Winooski, whose residents face greater environmental risks than residents of other areas.

# Expense



- BED Financial statements show that McNeil has generated losses for 8 of the last 10 fiscal years (2016–2025) totaling more than \$34 million over the 10-year period. (*This figure includes depreciation, but does not include interest.*)
- As 50% owner, BED bears 50% of these losses.
- The average real-time price for wholesale power in New England in 2024 was **\$39.50 per megawatt-hour**. *www.iso-ne.com/about/key-stats.*
- Wholesale prices were forecast to **increase to \$55/MWH in 2025**. *U.S. Energy Information Administration.*
- **The net cost of generating power from McNeil was \$96.42/MWH in fiscal year 2025 and \$98.70/MWH in fiscal year 2024.** *McNeil Joint Owners Operating Committee Materials.*

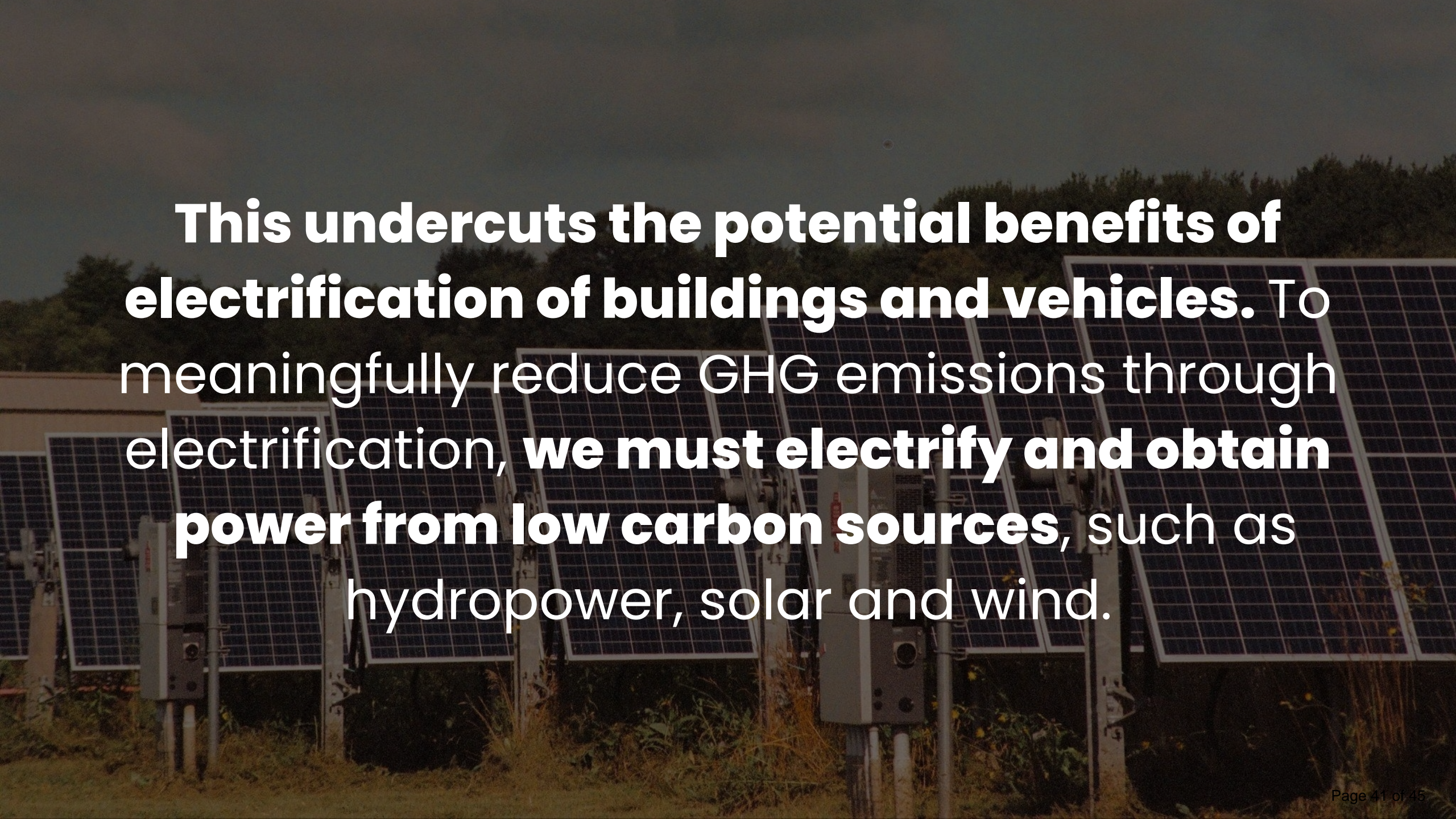
# Age & Efficiency of the Plant

- The plant is **26% efficient**. (*April 29, 2022 VEIC Summary Memorandum*)
- It **runs only about 50–60% of the time**, and is frequently off-line for planned maintenance, repairs due to operational problems, or because of market prices.
- BED has invested in capital improvements to extend operation of the 42-year-old plant beyond its anticipated useful life.
- In 2023, BED obtained City Council approval to move forward with District Energy Project which would depend on McNeil.
- Additional capital expenditures are planned or under consideration.
- **BED has planned all of these major expenditures without evaluating whether the plant should continue to operate or whether alternative sources of power would be more effective.**

# Flawed Policies

## **BED has directed the course of Burlington's overall climate policy, leading to flawed policies.**

- These call for reducing fossil fuel use rather than reducing GHG emissions from all sources (such as the McNeil Plant).
- The Net Zero Energy Roadmap defines “net zero,” as eliminating fossil fuel use in the heating and ground transportation sectors, yet calls for pursuit of the District Energy Project, which would perpetuate McNeil’s massive GHG emissions to produce electricity.
- The Carbon Pollution Impact Fee is applied to heating systems powered by fossil fuels but not to “renewable” systems and fuels with significant greenhouse gas emissions.

A photograph of a solar farm with rows of solar panels and electrical equipment, overlaid with white text. The background shows a field of solar panels under a clear sky, with some electrical boxes and wiring visible in the foreground.

**This undercuts the potential benefits of electrification of buildings and vehicles. To meaningfully reduce GHG emissions through electrification, we must electrify and obtain power from low carbon sources, such as hydropower, solar and wind.**

# Our Vision:



# Advocate!

## **Burlington City Government Should:**

- Place responsibility for development of the city climate policy in a city department or official independent of BED.
- Develop a plan to close the McNeil Plant, preferably by June 2028. The plan should include measures for a just transition to other employment for affected employees, a plan to keep electric rates stable, and ensure adequate energy for future needs.

# Actions We Can Take

- **Connect with our city councilors** (email, phone calls, in person conversations).
- Write to Mayor Mulvaney-Stanak.
- **Attend a city council meeting** and speak during public comment.
- NPAs to consider a resolution to send to City Council on this issue.
- **Attend Electric Commission meetings** and speak during public comment.
- **Get involved** with VT 350.org or Stop VT Biomass.

# **Questions Comments Discussion**

