



## Public Works Commission

**Wednesday, May 20, 2026, 6:30 PM, To Attend in Person - 645 Pine St. Main Conference Room OR REMOTELY via ZOOM**

**6:30 pm, Main Conference Room, 645 Pine St OR Remotely via ZOOM:**

**Please click the link below to join the webinar:**

<https://us02web.zoom.us/j/83495330508>

**Or Telephone: Dial US: 301-715-8592 Webinar ID: 834 9533 0508**

**Channel 17 also often livestreams this on their YouTube channel and airs it over the air at a later date. Note that comments on YouTube are not monitored.**

### **1. Call to Order**

---

### **2. Agenda - 5 Minutes**

---

2.1. Motion to amend/adopt agenda

### **3. Public Forum - 3 Minutes per Person Time Limit - 10 Minutes**

---

### **4. Consent Agenda - 5 Minutes**

---

4.1. Approval of Draft Minutes of 3-18-26 & 4-15-26

### **5. State Revolving Fund Public Hearings - 45 Minutes**

---

5.1. A. Cherry St. Infiltration

B. North Ave Stormwater Improvements

C. Old North End GSI/CSO Retrofits

D. Crescent Beach Pump Station & Forcemain Rehabilitation

**Subject** 5.2. Information, M. Moir, M. Lee, A. Walenty, M. Schramm, & C. Hulsizer

**Meeting** May 20, 2026 - DPW Commission Agenda - Wednesday, May 20, 2026, 6:30 PM, To Attend in Person - 645 Pine St. Main Conference Room OR REMOTELY via ZOOM

**Category** 5. State Revolving Fund Public Hearings - 45 Minutes

**Department** Public Works Department

**Type** Information

**Recommended Action** None

### **6. Director's Report - 10 Minutes**

---

**Subject** 6.1. Communication, C. Spencer

Meeting May 20, 2026 - DPW Commission Agenda - Wednesday, May 20, 2026, 6:30 PM, To Attend in Person - 645 Pine St. Main Conference Room OR REMOTELY via ZOOM

Category 6. Director's Report - 10 Minutes

Department Public Works Department

Type Communication

## **7. Commissioner Items**

---

## **8. Adjournment & Next Meeting Date - June 17, 2026**

---

**Subject 8.1. Motion to adjourn**

Meeting May 20, 2026 - DPW Commission Agenda - Wednesday, May 20, 2026, 6:30 PM, To Attend in Person - 645 Pine St. Main Conference Room OR REMOTELY via ZOOM

Category 8. Adjournment & Next Meeting Date - June 17, 2026

Department Council and Board

Type Action

Recommended Action Motion to Adjourn

DEPARTMENT OF PUBLIC WORKS  
645 PINE STREET  
BURLINGTON, VERMONT 05401  
COMMISSION MEETING March 18, 2026  
DRAFT MINUTES

See video for full meeting – link below

Commissioners Present: Commissioner Barr, Chair Damiani, Commissioner Davis, Vice Chair Fox, Commissioner Hays, Commissioner Munteanu (Via zoom),

On line attendance: Commissioner O’Neill-Vivanco

Commissioner Absent: Commissioner Damiani

**ITEM 1 – CALL TO ORDER**

**Chair Fox** called the meeting to order at p.m.

**ITEM 2 – AGENDA**

**ITEM 3 – PUBLIC FORUM**

Christina Erickson

**ITEM 4 – CONSENT AGENDA**

4.1 – Approval of Draft Minutes 02-18-26

4.2 – North Champlain St 15- Minute Parking Reallocation

Commissioner Barr made a motion to approve the consent agenda

Commissioner Munteanu seconded

Director Spender stated there was one blank in the minutes that

Commissioner Fox stated it’s usually Commissioner Barr, O’Neill-Vivanco

Director Spencer understanding is your move and approval is with that clarification for the motion and second?

Commissioner Munteanu stated he felt he was the secondary.

Commissioner Barr is friendly with the change that

Unanimous approval

**ITEM 5 – B.C.O Ch. 6 Bicycles Ordinance Changes**

Caleb Manna Associate Engineer

City Engineer Laura Wheelock – Division Director Tech Services

Commissioner Fox stated in the motion that this is an endorsement of the language but it doesn’t necessarily prohibit staff from moving forward with the changes to City Council

Council

Commissioner Munteanu made a motion to recommend the following changes for

Burlington City Ordinance for approval by the ordinance committee and City Council and that is the written Chapter 6 Bicycles Article 1in general, Chapter 20 motor vehicle and

traffic article 1 in general. Also including the various changes in line about 70 to 80 already discussed and communicated with the commission as recommended.

Commissioner Davis seconds

Commissioner Fox – Nay

Commissioner Hays – Nay

Commissioner Barr – Aye

Commissioner Davis – Aye

Commissioner Munteanu – Aye

Commissioner O’Neill-Vivanco – Aye

#### **ITEM 6 – ELMWOOD AVENUE PODS**

Director Spencer – update on future of pods

#### **ITEM 7 – DIRECTOR’S REPORT**

Director Spencer

Commissioner O’Neill-Vivanco asked questions about the traffic pattern on North Avenue and Institute Road once the school reopens this fall.

Director Spencer stating they are communicating with GMT to figure out the shelters, especially the one that is travelling north on the Avenue.

City Engineer Wheelock, timing of lights, improving sidewalks. Widening Institute Road.

#### **ITEM 8 – COMMISSIONER ITEMS**

Commissioner Hays inquired about the Pine Street traffic signals update on when they are going to be up and running,

City Engineer Laura Wheelock stated the contractor needs to put down some delaying paint on the Main and Pine intersection before they are allowed to turn them on. We are looking at April to get the paint down so tentative mid-April.

Commissioner Davis asked if a commissioner should be at the Ordinance meeting.

Director Spencer stated that they are welcome.

#### **ITEM 9 – ADJOURNMENT & NEXT MEETING DATE – April 15, 2026**

Commissioner Barr made a motion to adjourn

Not audible for second

Unanimous approval

DEPARTMENT OF PUBLIC WORKS  
645 PINE STREET  
BURLINGTON, VERMONT 05401  
COMMISSION MEETING April 16, 2026  
DRAFT MINUTES

See video for full meeting – link below

Commissioners Present: Commissioner Barr, Chair Damiani, Vice Chair Fox  
On line attendance: Commissioner Davis, Commissioner Munteanu  
Commissioner Absent: Commissioner O’Neil-Vivanco; Commissioner Hays

**ITEM 1 – CALL TO ORDER**

**Chair Damiani** called the meeting to order at p.m.

**ITEM 2 – AGENDA**

**Commissioner Barr** made a motion to approve the agenda  
**Commissioner Fox** seconded  
Unanimous approval

**ITEM 3 – PUBLIC FORUM**

Sharon Busher

**ITEM 4 – CONSENT AGENDA**

- 4.1 – Approval of Draft Minutes 3-18-26
- 4.2 – Elmwood & Intervale Avenue traffic calming

**Commissioner Barr** made a motion to approve consent agenda  
**Commissioner Fox** seconded  
**Commissioner Munteanu** stated the only document he has seen is the sign in sheet for public for from March meeting. Minutes were not attached: Are they there for us to approve  
**Information Officer Robert Goulding** stated he is looking online and it seems there may have been a bad scan

**ITEM 5 – ELMWOOD & INTERVALE AVENUE TRAFFIC CALMING**

**City Transportation Engineer** Parsa Pexeshknejad  
**Senior Transportation Engineer** Philip Peterson

**ITEM 6 – SIX MONTH REVIEW OF GOALS**

**Director Chapin Spencer**

**ITEM 7 – Director’s Report**

**Director Spencer, Information Officer Rob Goulding**

**ITEM 8 – COMMISSIONER ITEMS**

Commissioner Barr thanking crews for filling potholes

Commissioner Davis – update on ordinance change and language

Director Spencer stated we will be coming back with a Standard Operating Procedure for feedback and we are prepared to do this in the May meeting. We will also have clean up and ordinance as well for Car Share spaces and Accessible Spaces.

Commissioner Fox gave an update on the 127 path connection study

**ITEM 9 – DPW DIRECTOR ANNUAL REVIEW – EXECUTIVE SESSION**

Commissioner Barr made a motion to move to executive session.

Commissioner Fox proposed a motion to convene to executive session to discuss the annual review of the Public Works Director pursuant to 1 VSA 313A3

Commissioner Damiani made a second motion to just adjourn the meeting immediately after executive session



## MEMORANDUM

TO: Public Works Commission

FROM: Mike Schramm, PE Water Resources Engineer  
Megan Moir, Division Director Water Resources

CC: Chapin Spencer, DPW Director

DATE: May 20, 2026

RE: Environmental Review Public Hearing for the Great Streets Cherry Street Project

### **Introduction**

The Great Streets Cherry Street project is part of the Great Streets initiative which is making new investments in the downtown's public infrastructure, to ensure that Burlington residents have a downtown that is a vibrant, walkable and sustainable urban center. The project will reconstruct the entirety of Cherry Street from Battery Street to South Winooski Avenue and includes: a curbsless segment of Cherry Street to promote walkability and easy commerce, green infrastructure to continue the City's tradition of protecting Lake Champlain, better lighting, more seating, additional bike parking, healthier trees, and more. (Additional information can be found on the project website: <https://greatstreetsbtv.com/gsinitiative/reconnecting-bank-cherry/>).

The Cherry Street project is funded by multiple sources to limit the impact to the local taxpayer, including the Waterfront TIF District, a United States Department of Transportation (USDOT) Rebuilding American Infrastructure with Sustainability and Equity (RAISE) grant, a Congressionally Directed Spending (CDS) grant from Senator Leahy, and state revolving loan funds.

### **Stormwater Management Requirements**

The existing stormwater system on Cherry Street is a closed system that is part of a combined sanitary and storm system that goes to Burlington's Main Wastewater Treatment Plant (WWTP) prior to discharge into Lake Champlain. The proposed project will separate the storm and sanitary systems through the project area but these systems will be combined at the Battery Street Intersection. Although there is no regulatory treatment requirement for stormwater runoff from the project area since it is routed through the WWTP, the proposed design includes green infrastructure practices that infiltrate stormwater to reduce and delay the flow entering the piped combined sewer system to lessen the burden on the City's WWTP. This includes five (5) Bioretention Systems (Rain Gardens) designed to manage runoff from portions of Cherry and Pine Streets. As designed these systems will infiltrate stormwater into the ground which will filter the stormwater and recharge groundwater. The Great Streets standards also suggest the use of permeable pavers which will be implemented in the amenity zones where appropriate (no driveway crossing and adequate space for maintenance).

### **Environmental Review**

Portions of this project are being funded by the Clean Water and Drinking Water State Revolving Funds (CWSRF & DWSRF) and all federally funded projects are required to comply with National Environmental Policy Act (NEPA). NEPA investigates various sources and categories to determine impacts the proposed project may have on those resources. Project design engineer, Stantec, has completed the necessary review and documentation and obtained NEPA Programmatic Agreement Categorical Exclusion and clearances for the full Cherry Street project. The NEPA documentation and approval has been accepted by the State SRF program to satisfy the environmental information document requirements for the project. The Cherry St. project will be issued a Finding of No Significant Impact (FONSI) due to new indirect discharge to groundwater through installation of five (5) proposed rain gardens. A FONSI concludes that there are no significant environmental impacts to occur as a result of the implementation of the project. The States FONSI determination dictates that the City hold a Public Hearing to provide information to the public on the project for a public comment period. Following the completion of the comment period, the State will issue the final environmental review determination.

### **Attachments**

1. Programmatic Categorical Exclusion, letter from Julie Ann Held, VTrans Environmental Specialist, Environmental Section, Agency of Transportation, dated June 2, 2025
2. Notice of Intent to Issue a Finding of No Significant Impact, letter from Chloe Holsizer, Environmental Analyst IV, Water Investment Division, Department of Environmental Conservation dated May 7, 2026



**State of Vermont**  
**Agency of Transportation**  
**Environmental Section**  
 Barre City Place, 4th Floor,  
 219 North Main Street  
 Barre City, VT 05641  
<http://vtrans.vermont.gov/>

Patrick Kirby  
 Acting Division Administrator  
 Vermont Division Office  
 Federal Highway Administration  
 U.S. Department of Transportation  
 87 State Street, Montpelier, Vermont 05602

June 2, 2025

Attn: Elizabeth Shipley, FHWA Environmental and ROW Program Manager, via NEPA SharePoint Site  
 Re: Burlington CDS CD23(1)

Dear Mr. Kirby,

Project Burlington CDS CD23(1) is located in Burlington, Vermont. The project takes place along Cherry Street from Battery Street to S. Winooski Avenue. The project also takes place along Bank Street from Pine Street to S. Winooski Avenue. Additionally, the project takes place between Cherry Street and Bank Street along Pine Street and St. Paul Street.

Work to be performed under this contract includes full depth reconstruction of portions of Cherry Street, Bank Street, Pine Street, and St. Paul Street; installation of stormwater drainage systems, stormwater treatment, pervious and impervious pavers, concrete sidewalks, granite curbing, sanitary sewer, water main and underground utility installation and relocations, landscaping, lighting, signage, traffic signal, public street amenities, and incidental items.

The Vermont Agency of Transportation (VTrans) has considered the potential environmental consequences of the project in accordance with the National Environmental Policy Act (NEPA). VTrans has determined that this project meets all of the criteria specified in the Programmatic Agreement entitled "Processing of Projects Eligible for Categorical Exclusion," executed 02/13/24. The project qualifies for Categorical Exclusion pursuant to 23 CFR 771.117(c)(26) "Environmental Impact and Related Procedures - Categorical Exclusions" as the project consists of modernization of a highway by reconstruction.

This project will not induce significant impacts to planned growth or land use for the area; will not require the relocation of significant numbers of people; will not have a significant impact on any natural, cultural, recreational, historic, or other resource; will not involve significant air, noise, or water quality impacts; will not have significant impacts on travel patterns; and will not otherwise, either individually or cumulatively, have any significant environmental impacts.

Please contact Julie Ann Held, Environmental Specialist if you require additional information.

Respectfully,  
  
 Julie Ann Held  
 VTrans Environmental Specialist

Attachments  
 cc: Peter Pochop, Project Manager  
 Project File

## PROGRAMMATIC CATEGORICAL EXCLUSION CRITERIA

VTrans has determined that this project will **NOT**:

- A. X Require a temporary detour outside existing right-of-way, or a temporary wetland or stream crossing which will require non-routine mitigation, or a ramp closure, unless the following conditions are met :
- (1) provisions are made for access by local traffic and the facility is posted accordingly,
  - (2) businesses dependent upon through traffic will not be unduly affected,
  - (3) the temporary detour or ramp closure will not interfere with local special events,
  - (4) the temporary detour, ramp closure, wetland, or stream crossing will not substantially increase the environmental consequences of the action (project).
- B. X Involve construction in wetlands totaling more than 5,000 square feet of permanent impacts, requiring the Army Corp of Engineers to coordinate with resource agencies per the General Permit.
- C. X Require a Risk Analysis for an increase in 100-year flood water surface elevations, per EO 11988.
- D. X Involve construction within, or alter drainage patterns so as to adversely affect, a Sole Source Aquifer.
- E. X Require coordination with the US Fish and Wildlife Service for the preparation of a Biological Assessment for Threatened and Endangered Species, per 16 CFR Section 7.
- F. X Require acquisition of additional right-of-way (including permanent or temporary construction easements) involving: more than three acres of land per mile of roadway, or a total of 10 acres or more for a non-linear improvement (such as a bridge or an intersection), or any relocation of residences or businesses.
- G. X Require FHWA approval for changes in access control.
- H. X Involve acquisition of, or impacts upon Prime or Unique Farmland, unless a USDA Farmland Conversion Impact Rating Part VI Site Assessment has been completed and indicates Total Site Assessment Points less than 160 (doesn't apply to designated urban areas).
- I. X Cause an Adverse Effect to an archaeological or historic resource listed in, or eligible for inclusion in, the National Register of Historic Places.
- J. X Require use (permanent or temporary) of a Section 4(f) resource, unless that use meets the criteria for a de minimis or Programmatic 4(f); or involve the use of a Section 6(f) resource when compensation is required (property acquired or improved using Land and Water Conservation Funds).
- K. X Involve hazardous or residual waste liabilities subject to CERCLA and/or RCRA requirements.
- L. X Require a bridge permit from the US Coast Guard, per 23CFR 650 Subpart H.
- M. X Qualify as a Type I project and require analysis of noise abatement measures per 23 CFR 772 and the FHWA approved VTrans Noise Policy.
- N. X Require Emergency Relief (ER) funding.  
(NOTE: If coordination with the FHWA was required to reach this determination attach concurrence memo)

**Categorical Exclusion  
Environmental Analysis Sheet**

**Town** Burlington **Project No.** CDS CD23(1) **Route** Cherry Street, Bank Street, Pine Street, St. Paul Street  
Purpose and Need:

The purpose of the project is to reconstruct Cherry Street, Bank Street, Pine Street, and St. Paul Street to enhance safety by reconstructing previous connections. The need for the project is to reconstruct connections between Cherry Street and Bank Street and the need to provide a safe efficient transportation network for the traveling public.

**Does the project qualify for 23 CFR 771.117 (c)(1)?** \_\_\_\_\_ **YES**   **X**   **NO**

If Yes, then no further analysis is required. If No, then please complete the checklist below.

**Is the Criteria of 23 CFR 771.117 (c) Applicable?**   **X**   **YES** \_\_\_\_\_ **NO**

Note: Projects that meet the criteria of 23 CFR771.117 (c) only need to address the sections marked with an asterisk (\*). This does not preclude the need to obtain applicable state and federal concurrences and/ or permits.

**1. Air Quality**

Since the state of Vermont is in attainment for all the National Ambient Air Quality Standards (NAAQS) criteria pollutants (CO, Pb, NO2, O3, SO2, PM10, and PM2.5), the proposed project is exempt from conformity per 40 CFR 93.126 or 40 CFR 93.128 and is also exempt from regional conformity (regional emissions analysis requirements) per 40 CFR 93.127.

**2. Noise**

Type I Project (VTrans Noise Policy) Yes \_\_\_\_\_ No \_\_\_\_\_

If yes, number of receptors impacted \_\_\_\_\_

Mitigation Requirements \_\_\_\_\_

**3. Water Quality**

Wetlands

\* Wetland Impact area Temporary   0   Permanent   0  

\* Buffer Impact area Temporary   0   Permanent   0  

Floodplains Encroachment Yes \_\_\_\_\_ No \_\_\_\_\_

Describe/ VANR Comments \_\_\_\_\_

**4. U.S. Army Corps of Engineers**

Section 10 and/or Section 404 Permit Required Yes \_\_\_\_\_ No \_\_\_\_\_ Acquired \_\_\_\_\_

Permit Type \_\_\_\_\_

COE Comments \_\_\_\_\_

**5. U.S. Coast Guard**

Navigable Waters Yes \_\_\_\_\_ No \_\_\_\_\_ Involved Waterway \_\_\_\_\_

If No, then proceed to next section.

Rivers & Harbors Act Section 9 and/or

Bridge Act of 1946 Permit(s) Required Yes \_\_\_\_\_ No \_\_\_\_\_ Acquired \_\_\_\_\_

Section 144(c) "Exemption" Yes \_\_\_\_\_ No \_\_\_\_\_ Acquired \_\_\_\_\_

USCG Comments \_\_\_\_\_

**\* 6. Threatened and Endangered Species and Habitat**

Present in Project Area Yes \_\_\_\_\_ No   **X**

If No, then proceed to next section.

See VTrans Biologist Natural Resource Clearance dated 03/12/2025.

---

7. **Agricultural Land [Farmland Policy Protection Act - FPPA]**

Project located in Federal-aid Urban Area Yes \_\_\_\_\_ No \_\_\_\_\_

If Yes, then FPPA doesn't apply, proceed to next section.

Prime/secondary/locally important soils present Yes \_\_\_\_\_ No \_\_\_\_\_

Describe Impacts/Comments \_\_\_\_\_

Current land use (land in agricultural use) \_\_\_\_\_

Form 1006 Parts 1, III, VI, VII, completed (FHWA) Yes \_\_\_\_\_ No \_\_\_\_\_

Form 1006 Parts II, IV, V completed (NRCS) Yes \_\_\_\_\_ No \_\_\_\_\_

Vermont Department of Agriculture comments \_\_\_\_\_

\*8. **Hazardous/ Residual Waste Liabilities**

Significant excavation Yes  X  No \_\_\_\_\_

Significant ROW acquisitions Yes \_\_\_\_\_ No  X

Bridge demolition or rehabilitation Yes \_\_\_\_\_ No  X

If yes for any of the above, an Initial Site Assessment (ISA) should be completed  
(Contact the Project Contamination Engineer regarding completion of an ISA)

Haz Waste Present in project site Yes  TBD  No \_\_\_\_\_

Urban Soils Background Area Yes  X  No \_\_\_\_\_

If both are No, then proceed to next section.

Determination from VANR Atlas Yes  X  No \_\_\_\_\_

Determination from field visit Yes \_\_\_\_\_ No  X

Borings completed Yes \_\_\_\_\_ No  X

Petroleum related wastes Yes  TBD  No \_\_\_\_\_

CERCLA involvement Yes \_\_\_\_\_ No  X

Remediation required Yes  TBD  No \_\_\_\_\_

Describe There has been a draft Initial Site Assessment (ISA) Completed by Stantec dated October 29,2024 saved to the project file. Further preliminary project site area contamination concerns/liabilities are documented in this ISA. Furthermore, the project site is located within an ANR Atlas mapped Urban Soil Background Area. I have reviewed the ISA completed by Stantec, and agree with the report, specifically Section 7.3 (Recommendations and Environmental Concerns). As outlined in the ISA, a soil and groundwater characterization work plan should be developed during project design based on the ISA's findings.

\* 9. **Historical or Archaeological Resources (Section 106)**

Historic Resources: Present in APE Yes \_\_\_\_\_ No  X  Exempt/ Screened \_\_\_\_\_

Archeological Resources: Present in APE Yes  X  No \_\_\_\_\_ Exempt/ Screened \_\_\_\_\_

Section 106 Determination  No Adverse Effect 05/29/2025

See Section 106 Memorandum for additional information.

Programmatic/ Memorandum of Agreement needed Yes \_\_\_\_\_ No  X  Executed \_\_\_\_\_

SHPO coordination completed  n/a per 2023 PA

Tribal coordination completed.

\* 10. **Section 4(f) Resources**

Section 4(f) Resource review required Yes \_\_\_\_\_ No  X

If No, then proceed to next section.

Section 4(f) Approval (check one)

Negative Declaration \_\_\_\_\_ de minimis 4(f) \_\_\_\_\_ Programmatic 4(f) \_\_\_\_\_ Circulated 4(f) \_\_\_\_\_

\*11. **6(f) Resources**

Section 6(f) involvement (LWCF Funding) Yes \_\_\_\_\_ No X

If No, then proceed to next section.

National Park Service Conversion Approval \_\_\_\_\_

Section 6(f) Comments There aren't any 6(f) resources within the project limits

**\* 12. Right of Way**

New ROW Acquisition fee simple Yes \_\_\_\_\_ No X  
permanent easement Yes X No \_\_\_\_\_  
temporary easement Yes X No \_\_\_\_\_

Description of taking Permanent and temporary easements will be required for drive connections and underground utility service connections along with construction access.

Improved properties acquired Yes \_\_\_\_\_ No X

Displacements: Rental Units 0 Private Homes 0 Businesses 0

(If there are any displacements, then a d-list CE needs to be completed.)

Is there substantial controversy that would preclude this project being completed as a CE?

Yes \_\_\_\_\_ No X

Relocation services to be provided n/a

Properties available for relocation n/a

**13. Public Participation Opportunity**

Pre-Design Site Meeting Yes \_\_\_\_\_ No \_\_\_\_\_ Date \_\_\_\_\_

Public Information Meeting Yes \_\_\_\_\_ No \_\_\_\_\_ Date \_\_\_\_\_

Public Hearing Required (502) Yes \_\_\_\_\_ No \_\_\_\_\_ Date \_\_\_\_\_

**14. Social and Economic Concerns**

Neighborhood and Community Concerns Yes \_\_\_\_\_ No \_\_\_\_\_

\_\_\_\_\_ Churches/ Houses of Worship \_\_\_\_\_ Elderly

\_\_\_\_\_ Schools \_\_\_\_\_ Handicapped

\_\_\_\_\_ Low Income Housing \_\_\_\_\_ Emergency Services

\_\_\_\_\_ Other

Describe \_\_\_\_\_

Effect on local business Yes \_\_\_\_\_ No \_\_\_\_\_ (Describe) \_\_\_\_\_

Temp. effect on business Yes \_\_\_\_\_ No \_\_\_\_\_ (Describe) \_\_\_\_\_

**15. Aesthetic Considerations**

Does the project impact a Scenic Byway/ VT Scenic Highway? Yes \_\_\_\_\_ No \_\_\_\_\_

Describe \_\_\_\_\_

Comments \_\_\_\_\_

**Summary of Commitments and Mitigation**

Describe

**Threatened and Endangered Species and Habitat**

The Contractor shall ensure all personnel working on the project site are made aware of the potential presence and protected status of the tricolored and northern long-eared bat. No suitable bat habitat is present within the project limits and no Time-of-Year (TOY) restrictions are required.

The Contractor is hereby made aware of the potential for TOY restrictions related to proposed Waste, Borrow and Staging areas. Cutting trees ≥3 inches in diameter outside of the contract project limits shall require review under Section 105.25 Opening Off-Site Activity Areas.

## Invasive Material

If invasive species are delineated on the Plans or found in the project area and confirmed by the Engineer, the invasive species, and any soil excavated from areas that contained the invasive species, will be termed invasive material.

The Contractor shall handle the invasive material in accordance with the *VTrans State Highway System Roadside Terrestrial Invasive Plants Best Management Practices (BMPs)*. The Contractor shall stockpile the invasive material separately from other soil stockpile areas. A ground barrier and perimeter containment system shall be in place around the area intended for stockpiling the invasive material. Equipment shall be cleaned of all soil and plant matter prior to arriving on site in accordance with Subsection 107.06. The equipment used for excavation and transport of invasive material shall be cleaned of all soil and plant matter before being used for work in other areas in accordance with the BMPs.

To the extent possible, invasive material shall be reused on site. Invasive material shall only be reused on site in areas where the presence of the invasive species were clearly evident. If there is an excess of invasive material, it shall be wasted in accordance with the BMPs.

The cost of excavating invasive material will be paid for under the appropriate Contract excavation items. When invasive species are delineated on the Plans, the additional cost for handling invasive material, following the BMPs, cleaning equipment, and wasting excess invasive material will be incidental to all other Contract items. When invasive species are not delineated on the Plans, and compensation is not otherwise provided for in the Contract, the work of handling invasive material, following the BMPs, cleaning equipment, and wasting excess invasive material will be considered extra work in accordance with Subsection 104.03 and will be paid for in accordance with Subsection 109.06.

## Archaeology:

1. VTrans will hire a 36CFR61 qualified archaeological consultant prior to construction of the project to monitor excavation in the specific following locations:

The northeast corner of Cherry and St. Paul streets, the southwest corner of Church and Cherry streets, and along Bank Street between Church Street and South Winooski Avenue.

2. If features are identified during construction, the VTrans Archaeology Officer and qualified consultant shall consult with SHPO to record, document and evaluate the National Register eligibility of the site and the project's effect on the site. A plan will be designed for avoiding or mitigating adverse effects on a potentially eligible site.

3. If human remains are identified and they have been determined to be archaeological in nature, the State Archaeologist will be notified and VTrans will follow the principles outlined in the "Advisory Council's on Historic Preservation's Policy Statement on Treatment of Burial Sites, Human Remains and Funerary Objects"(March 1, 2023).

4.If the human remains are identified as Native American, then a treatment and reburial plan shall be developed in full consultation with the appropriate Native American group(s) in compliance with the requirements of the Native American Graves and Repatriation Act (NAGPRA).

5.The project manager will ensure that the locations for monitoring are provided to the contractors at the time of bidding to ensure that the contractor is aware of the need to coordinate with the VTrans Archaeology Officer and archaeological consultant.

6.The project manager will notify the VTrans Archaeology Officer of the Pre-Construction meeting so that coordination between the archaeological consultant and contractor can take place.

7.If project plans change to include any areas outside of the existing APE defined in Attachment C of the undertaking's Section 106 No Adverse Effect consultation memo that was reviewed and approved by FRA, SHPO and VTrans August 12, 2024, further archaeological review will be required to evaluate the archaeological potential of the new areas.

8.The contractor shall coordinate directly with the archaeological consultant and VTrans Archaeology Officer to confirm





Vermont Department of Environmental Conservation

*Agency of Natural Resources*

WATER INVESTMENT DIVISION  
National Life Building, DAVIS 3  
1 National Life Drive  
Montpelier, VT 05620-3510  
FAX: (802)828-1552

Megan Moir, DPW Director of Water  
Authorized Representative  
City of Burlington  
234 Penny Lane  
Burlington, VT 05401

5/7/2026  
Expiration Date: 5/7/2031

**Re: Wastewater Treatment Plants (WWTPs) Upgrade Stage 2 - Cherry St Sewer Upgrade Project  
Vermont/ USEPA Clean Water Revolving Loan Number RF1-332**

**Notice of Intent to Issue a Finding of No Significant Impact**

Dear Megan Moir:

The Department of Environmental Conservation intends to issue a Finding of No Significant Impact (FONSI) for the WWTPs Upgrade Stage 2 - Cherry St Sewer Upgrade Project.

The project has positive environmental impacts consisting of preventing wastewater from discharging into local waterways through Combined Sewer Overflow events by separating wastewater and stormwater into two distinct systems.

This project additionally involves impacts including a new indirect discharge to groundwater due to the installation of rain gardens as part of the proposed project.

Otherwise, this project may have been eligible for Categorical Exclusion from detailed environmental review; additionally, the direct and indirect environmental effects of the project are still not significant enough to necessitate an Environmental Impact Statement (EIS).

The Department's environmental review procedures require a 30-day public comment period following the issuance of a Notice of Intent to Issue a Finding of No Significant Impact. If no public comments received during that period demonstrate that this Notice of Intent is in error, then the Finding of No Significant Impact will become effective.

**Megan Moir, Authorized Representative, City of Burlington**  
**WWTPs Upgrade Stage 2 Cherry St Sewer Upgrade**  
**Finding of No Significant Impact**  
**5/7/2026**

Copies of documents supporting a Finding of No Significant Impact are enclosed. Please keep copies of the enclosed documents, along with any pertinent reports by your consulting engineers, available for public inspection during a public comment period of 30 days. A full list of the documents that must be available for public inspection is attached. Please call (802) 522-3562 if you have any questions or concerns.

Sincerely,

Signed by:

  
 8ACCAE33DAD1468...

5/6/2026

Chloe Hulsizer  
 Environmental Analyst IV  
 Water Investment Division

Enclosures

Documents Posted for Finding of No Significant Impact Public Comment Period (30 days)

- Notice of Intent to Issue a Finding of No Significant Impact (Signed by Emily Bird, Director, Water Investment Division, enclosed.)
- Evaluation of Eligibility for Finding of No Significant Impact (Approved by Emily Bird, Director, Water Investment Division, enclosed.)
- State Environmental Review Procedures for Projects Funded Through the Vermont/ EPA Revolving Loan Program, <https://dec.vermont.gov/water-investment/water-financing/srf/environmental-review>

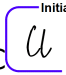
Additional Documents Needed for Finding of No Significant Impact Public Comment Period (30 days)

- Environmental Review Attachments, by Chloe Hulsizer.  
<https://anrweb.vt.gov/DEC/IronPIG/DownloadFile.aspx?DID=218775&DVID=0>
- Archaeological Resources Assessment (ARA) entitled *Archaeological Resources Assessment and Historic Resource Review, CDS Cherry Street and Raise Reconnecting Downtown Project, Burlington, Chittenden County, Vermont*, and dated 10/11/2024, by the University of Vermont Consulting Archaeology Program.  
<https://anrweb.vt.gov/DEC/IronPIG/DownloadFile.aspx?DID=218776&DVID=0>

**Megan Moir, Authorized Representative, City of Burlington  
 WWTPs Upgrade Stage 2 Cherry St Sewer Upgrade  
 Finding of No Significant Impact  
 5/7/2026**

- Section 106 Project Review Memorandum, dated 5/29/2025, by Jeannine Russell, VTrans Archaeology Officer, and Judith Williams Ehrlich, VTrans Historic Preservation Officer. <https://anrweb.vt.gov/DEC/IronPIG/DownloadFile.aspx?DID=218778&DVID=0>
- Burlington CDS CD23(1) 23D179 Contaminated Materials NEPA Review, dated 11/15/2024, by the Vermont Agency of Transportation. <https://anrweb.vt.gov/DEC/IronPIG/DownloadFile.aspx?DID=218777&DVID=0>
- Burlington CDS23(1) NEPA Stormwater Review, dated 4/15/2025, by Heather Voisin, Vermont Agency of Transportation. <https://anrweb.vt.gov/DEC/IronPIG/DownloadFile.aspx?DID=218779&DVID=0>
- Programmatic Natural Resource Clearance for Select Activities, dated 3/12/2025, by Glenn Gingras, VTrans Senior Biologist. <https://anrweb.vt.gov/DEC/IronPIG/DownloadFile.aspx?DID=218780&DVID=0>
- MAB Environmental Documentation Clearance, dated 6/2/2025, by the Vermont Agency of Transportation. <https://anrweb.vt.gov/DEC/IronPIG/DownloadFile.aspx?DID=218781&DVID=0>
- Burlington CDS CD23(1), dated 6/2/2025 by the Vermont Agency of Transportation. <https://anrweb.vt.gov/DEC/IronPIG/DownloadFile.aspx?DID=218782&DVID=0>
- Memo: Increased Capacity Provided by 24-inch Pipe Size Design, dated 3/25/2026, by Elke Ochs, PE. <https://anrweb.vt.gov/DEC/IronPIG/DownloadFile.aspx?DID=219796&DVID=0>
- Preliminary Engineering Report (PER) entitled “Main and East WWTF Stage 1 and Stage 2 Upgrades – Preliminary Engineering Report” (2 files), and dated June 2025, by Wright-Pierce. <https://anrweb.vt.gov/DEC/IronPIG/DownloadFile.aspx?DID=215871&DVID=0> , <https://anrweb.vt.gov/DEC/IronPIG/DownloadFile.aspx?DID=215870&DVID=0>

**COPY LIST**

**Heather Collins, Aaron Krymkowski, and John Merrifield, PE**, Wastewater Program, VT-DEC  
**Eric Deratzian**, Drinking Water and Groundwater Protection Division, VT-DEC  
**Terry Purcell**, VT-DEC, Watershed Management Division  
**Scott Dillon and Elizabeth Peebles**, Division for Historic Preservation, ACCD  
**Matt Dow**, Director of Wastewater Facilities, City of Burlington  
**Martin Lee, PE, Ashley Walenty, PE, & Michael Schramm, PE**, City of Burlington  
**Kristen Lemasney, PE**, Wright-Pierce  
**Lynnette Claudon, PE**, Water Investment Division, VT-DEC  5/6/2026  
**Don Haddox**, Design and Construction Engineering Section Supervisor, VT-DEC  
**Israel Maynard, PE**, Stantec



Vermont Department of Environmental Conservation

*Agency of Natural Resources*

Department of Environmental Conservation  
Water Investment Division  
1 National Life Drive, Davis 3  
Montpelier, VT 05620

**(802) 522-3562**

Notice of Intent to Issue a Finding of No Significant Impact

**City of Burlington  
WWTPs Upgrade Stage 2 Cherry St Sewer Upgrade**

Vermont/ USEPA Clean Water Revolving Loan Number: RF1-332

In accordance with section VII of the Department's *"Environmental Review Procedures for Projects Funded Through the Vermont/EPA Revolving Loan Program"*, the Department of Environmental Conservation intends to issue a Finding of No Significant Impact (FONSI) for the proposed WWTPs Upgrade Stage 2, Cherry St Sewer Upgrade Project. This project involves the construction of an upsized collection system sanitary sewer main and stormwater separation along portions of Cherry St., Bank St., Pine St., and St. Paul St. in Burlington, VT.

Under the Procedure, the project is ineligible for Categorical Exclusion (CATEX) from detailed environmental review. The project involves impacts including a new indirect discharge to groundwater due to the installation of rain gardens as part of the proposed project and therefore exceeds the threshold for CATEX.

Also, the direct and indirect environmental effects of the project are not significant enough to necessitate an Environmental Impact Statement (EIS) under the Department's environmental review procedures. The project will not increase the current permitted flow capacity of the treatment plant, and the project will not include sewer extensions.

Consideration of the FONSI included a review of the following documents:

- **Environmental Review Attachments**, by Chloe Hulsizer.  
<https://anrweb.vt.gov/DEC/IronPIG/DownloadFile.aspx?DID=218775&DVID=0>
- **Burlington CDS CD23(1) 23D179 Contaminated Materials NEPA Review**, dated 11/15/2024, by the Vermont Agency of Transportation.  
<https://anrweb.vt.gov/DEC/IronPIG/DownloadFile.aspx?DID=218777&DVID=0>

**City of Burlington**  
**WWTPs Upgrade Stage 2, Cherry St Sewer Upgrade**  
**Notice of Intent to Issue a Finding of No Significant Impact**  
**5/7/2026**

- **Burlington CDS23(1) NEPA Stormwater Review**, dated 4/15/2025, by Heather Voisin, Vermont Agency of Transportation.  
<https://anrweb.vt.gov/DEC/IronPIG/DownloadFile.aspx?DID=218779&DVID=0>
- **Programmatic Natural Resource Clearance for Select Activities**, dated 3/12/2025, by Glenn Gingras, VTrans Senior Biologist.  
<https://anrweb.vt.gov/DEC/IronPIG/DownloadFile.aspx?DID=218780&DVID=0>
- **MAB Environmental Documentation Clearance**, dated 6/2/2025, by the Vermont Agency of Transportation. <https://anrweb.vt.gov/DEC/IronPIG/DownloadFile.aspx?DID=218781&DVID=0>
- **Burlington CDS CD23(1)**, dated 6/2/2025 by the Vermont Agency of Transportation.  
<https://anrweb.vt.gov/DEC/IronPIG/DownloadFile.aspx?DID=218782&DVID=0>

**City of Burlington  
WWTPs Upgrade Stage 2, Cherry St Sewer Upgrade  
Notice of Intent to Issue a Finding of No Significant Impact  
5/7/2026**

Further information on the project and this Notice of Intent is available for inspection at the following locations:

Megan Moir, DPW Director of Water  
City of Burlington  
234 Penny Lane  
Burlington, VT 05401

tel. (802) 863-4501  
mmoir@burlingtonvt.gov

Chloe Hulsizer  
Vermont Department of Environmental Conservation  
Water Investment Division  
1 National Life Drive, Davis 3  
Montpelier, VT 05620-3510

tel. (802) 522-3562  
Chloe.Hulsizer@Vermont.gov

*(Note: National Life requires photo identification to obtain an access badge for entry.)*

Kristen Lemasney, PE  
Wright-Pierce  
431 Pine Street Suite G01  
Burlington, VT, 05401

tel. (603) 430-3728  
kristen.lemasney@wright-pierce.com

No significant administrative action will be taken on this project for thirty (30) days from issuance of this Notice of Determination, to allow for public response.

Signed by:  
  
\_\_\_\_\_  
Emily Bird, Director  
Water Investment Division

5/7/2026  
\_\_\_\_\_  
Date

Department of Environmental Conservation  
Vermont Agency of Natural Resources



Vermont Department of Environmental Conservation

Agency of Natural Resources

TO: Emily Bird, Director, Water Investment Division <sup>Initial</sup> EB 5/7/2026

FROM: Chloe Hulsizer,  
Environmental Analyst IV, Water Investment Division <sup>Initial</sup> CH 5/6/2026

SUBJECT: City of Burlington  
WWTPs Upgrade Stage 2 Cherry St Sewer Upgrade Project

**Evaluation of Eligibility for Finding of No Significant Impact**

DATE: 5/7/2026

A. Project Identification

Project Name: City of Burlington  
WWTPs Upgrade Stage 2 Cherry St Sewer Upgrade

Address: Megan Moir, Authorized Representative  
City of Burlington  
234 Penny Lane  
Burlington, VT 05401

Project Location: City of Burlington, Vermont  
The Cherry St Sewer Upgrade project will take place in Burlington, VT, in the Northern Lake Champlain watershed. Sanitary sewer main construction will occur on portions of Cherry St., Bank St., Pine St., and Saint Paul St.

Vermont/ USEPA Clean Water Revolving Loan Number: **RF1-332**

**Megan Moir, Authorized Representative, City of Burlington  
 Evaluation of Eligibility for Finding of No Significant Impact  
 WWTPs Upgrade Stage 2 Cherry St Sewer Upgrade  
 Vermont/ USEPA Clean Water Loan Number RF1-332  
 5/7/2026**

B. Summary of Environmental Review

The Department of Environmental Conservation, Water Investment Division, has reviewed this proposed project in accordance with the Department's State Environmental Review Procedures for Projects Funded Through the Vermont/ EPA Revolving Loan Program.

The Department has reviewed the following planning documents:

- Burlington CDS CD23(1) 23D179 Contaminated Materials NEPA Review, dated 11/15/2024, by the Vermont Agency of Transportation.  
<https://anrweb.vt.gov/DEC/IronPIG/DownloadFile.aspx?DID=218777&DVID=0>
- Burlington CDS23(1) NEPA Stormwater Review, dated 4/15/2025, by Heather Voisin, Vermont Agency of Transportation.  
<https://anrweb.vt.gov/DEC/IronPIG/DownloadFile.aspx?DID=218779&DVID=0>
- Programmatic Natural Resource Clearance for Select Activities, dated 3/12/2025, by Glenn Gingras, VTrans Senior Biologist.  
<https://anrweb.vt.gov/DEC/IronPIG/DownloadFile.aspx?DID=218780&DVID=0>
- MAB Environmental Documentation Clearance, dated 6/2/2025, by the Vermont Agency of Transportation. <https://anrweb.vt.gov/DEC/IronPIG/DownloadFile.aspx?DID=218781&DVID=0>
- Burlington CDS CD23(1), dated 6/2/2025 by the Vermont Agency of Transportation.  
<https://anrweb.vt.gov/DEC/IronPIG/DownloadFile.aspx?DID=218782&DVID=0>
- Environmental Review Attachments, by Chloe Hulsizer.  
<https://anrweb.vt.gov/DEC/IronPIG/DownloadFile.aspx?DID=218775&DVID=0>
- Preliminary Engineering Report (PER) entitled "*Main and East WWTF Stage 1 and Stage 2 Upgrades – Preliminary Engineering Report*" (2 files), and dated June 2025, by Wright-Pierce.  
<https://anrweb.vt.gov/DEC/IronPIG/DownloadFile.aspx?DID=215871&DVID=0> ,  
<https://anrweb.vt.gov/DEC/IronPIG/DownloadFile.aspx?DID=215870&DVID=0>

A Finding of No Significant Impact (FONSI) is the appropriate environmental review response for this project if the issues presented can be resolved with mitigation or permits. This project is not eligible for Categorical Exclusion from detailed environmental review due to potential impacts including a new indirect discharge to groundwater due to the installation of rain gardens as part of the proposed project. Also, the project's direct and indirect environmental effects do not necessitate issuance of an Environmental Impact Statement (EIS), consistent with the criteria as described in section XI of the Department's environmental review procedures.



---

**Vermont Department of Environmental Conservation*****Agency of Natural Resources*****1. Project Description**

The City of Burlington is located in Chittenden County, Vermont in the Northern Lake Champlain watershed.

This project involves the construction of an upsized collection system sanitary sewer main and stormwater separation along portions of Cherry St., Bank St., Pine St., and St. Paul St. in Burlington, VT. The stormwater separation aspect of this project will help to prevent wastewater from discharging into waterways through Combined Sewer Overflow events by separating wastewater and stormwater into two distinct systems.

This work is expected to be constructed with Clean Water State Revolving Fund (CWSRF) loan. Eligibility for clean water revolving loan (CWSRF) construction funding will be limited to the eligible clean water work as detailed in the Preliminary Engineering Report and to physical areas cleared through this environmental review process.

The contract documents will contain standard requirements to limit hours of construction and to control noise, dust and discharges of stormwater runoff or pollutants during construction.

**2. Justification for Finding of No Significant Impact**

We have determined that the proposed project meets the criteria for issuance of a Finding of No Significant Impact.

This project involves potential impacts including a new indirect discharge to groundwater due to the installation of rain gardens as part of the proposed project.

Mitigation measures:

1. **Dust and Noise:** Practices to limit these impacts will be required, such as regular sweeping, erosion prevention and sediment control measures, or water application, and work will be limited to normal 7 am to 5 pm weekday working hours.
  2. **Contaminated Soils Management:** Owner will submit a Soils Management Plan to DEC for review and approval for the wasting, transportation, and disposal of any identified contaminated soil materials. Additional measures include alternative pipe materials to address potential incompatibility. Include the use of bentonite dams, to preclude migration of affected groundwater through pipe bedding.
  3. **Transportation and Public Transit:** Prior to the beginning of construction, the Contractor will be required to provide notice to the local public transit agency, concerning the project schedule and potential impacts to the bus service or bus stops in the project area. The Contractor will be required to provide supplemental signage or temporarily relocate the bus stops as needed to maintain public transit service in this area.
-

**Megan Moir, Authorized Representative, City of Burlington  
Evaluation of Eligibility for Finding of No Significant Impact  
WWTPs Upgrade Stage 2 Cherry St Sewer Upgrade  
Vermont/ USEPA Clean Water Loan Number RF1-332  
5/7/2026**

Otherwise, this project may have been eligible for Categorical Exclusion from detailed environmental review; additionally, the direct and indirect environmental effects of the project are still not significant enough to necessitate an Environmental Impact Statement (EIS).

Specifically, the project will not increase the design hydraulic capacity of the wastewater treatment plant by more than 20 percent, and it will not increase the design organic treatment capacity (equivalent population served) by more than 30 percent. The project does not include sewer extensions.

The project will not create a new permanent discharge of stormwater or treated wastewater to surface waters or groundwater, and there will be no increase of effluent pollutant loadings (pounds per day) permitted to be discharged from associated wastewater treatment plant.

A public hearing will be held on May 20, 2026 at the Burlington Department of Public Works Commission Meeting as part of this FONSI process.

# Environmental Review – Public Hearing for:

1. Cherry Street – Bioretention/Rain Gardens
2. North Avenue Stormwater Improvements Project
3. Old North End GSI/CSO Retrofits Project
4. Crescent Beach PS and Forcemain Rehabilitation Project

Burlington Department of Public Work – Water Resources



**Environmental Review**  
Public Hearing  
May 20, 2026

# State Environmental Review Process

Finding of No Significant Impact



# Groundwater Protection

Stormwater infiltration chambers are designed to remove sediment from the stormwater prior to infiltrating to groundwater

Project will remove stormwater from the combined sewer collection system allowing additional capacity in the collection system to convey sewer and at the treatment plant to treat

GREAT STREETS

**Reconnecting  
Bank & Cherry**  
with St. Paul & Pine

# Cherry Street Bioretention

Environmental Review - Public Hearing

May 20, 2026

*Purpose for Presentation:*  
Stormwater discharges to groundwater from  
proposed Cherry Street Bioretention Systems

PREPARED BY



Burlington Department of Public Works  
645 Pine Street, Burlington VT, 05401  
802-809-1355

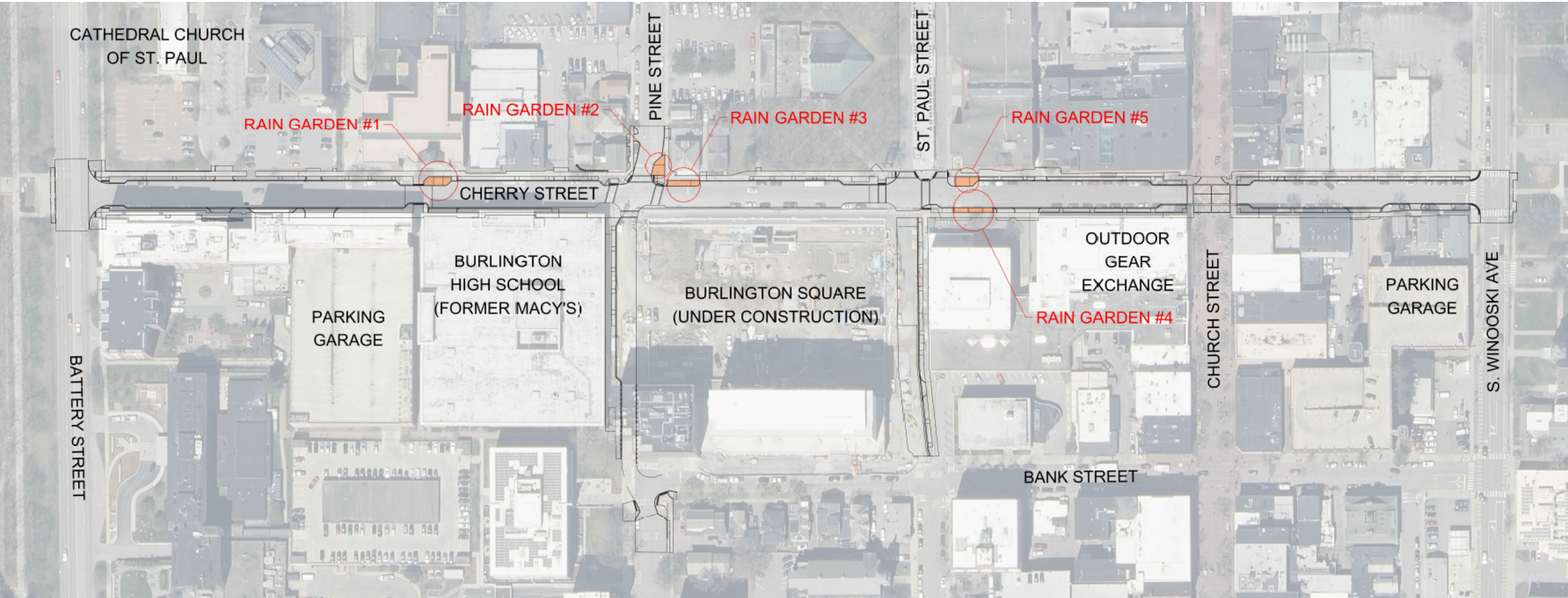
## Why Infiltration?

Per Great Streets Standards:

“Because most of the downtown study area is within Burlington’s Combined Sewer Area, it is important to infiltrate and delay the flow of stormwater entering the piped system to lessen the burden on the City’s main Wastewater Treatment Plant.”



# Locations



# Expected Infiltration Volumes

## 1" storm event

Rain Garden 1: 430 cf (3200 gallons)

Rain Garden 2: 590 cf (4400 gallons)

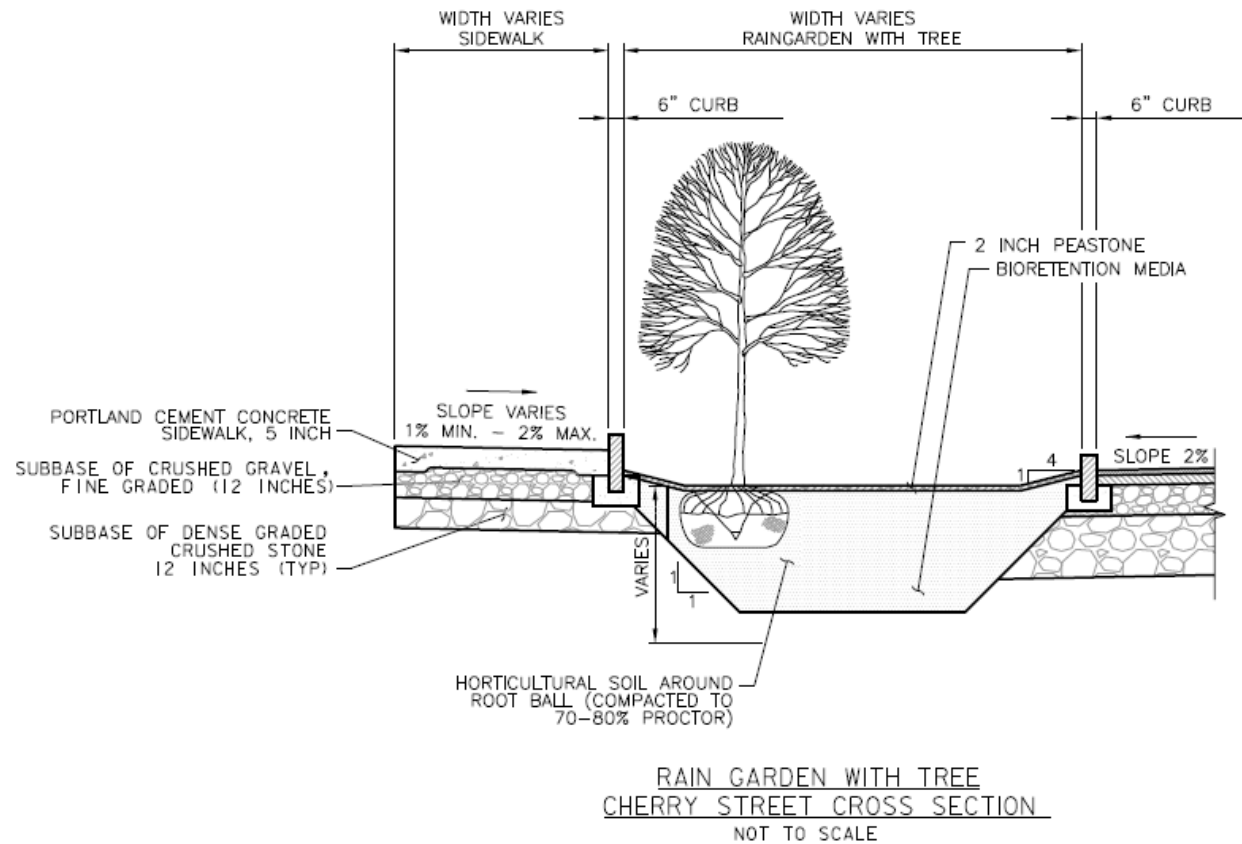
Rain Garden 3: 700 cf (5200 gallons)

Rain Garden 4: 430 cf (3200 gallons)

Rain Garden 5: 590 cf (4400 gallons)

Totals: 2740 cf (20400 gallons)





Thank You

Project Website

[greatstreetsbtv.com/gs-initiative/reconnecting-bank-cherry/](https://greatstreetsbtv.com/gs-initiative/reconnecting-bank-cherry/)

# Environmental Review

## Environmental Review Process for SRF Projects

### What's involved in a typical public hearing?

- The hearing is warned in accordance with state law and local practice.
- The hearing is opened by the governing body.
- The state Water Investment Division representative and any other participants in the hearing are introduced.
- The project owner or consulting engineer presents information related to the positive and negative environmental impacts of the project. This often includes posters or power point demonstrations.
- The governing body opens the floor to public comments.
- Comments are given by the public and if possible, questions are answered by the project owner, the consulting engineer, or sometimes the state official. The name of the commenter and the comment are recorded for the record and public comment responsiveness summary.
- The governing body closes the floor to public comment and closes the public hearing.
- The governing body takes minutes and sends them to the state official after they are approved.
- The governing body posts the video of the hearing, if available and makes the link available to the state official.

Source: <https://dec.vermont.gov/water-investment/water-financing/srf/environmental-review>



## MEMORANDUM

TO: Public Works Commission

FROM: Ashley Walenty, PE Water Resources Engineer  
Megan Moir, Division Director Water Resources

CC: Chapin Spencer, DPW Director

DATE: May 20, 2026

RE: Environmental Review Public Hearing for North Avenue Stormwater Improvements Project

### **Introduction**

The City of Burlington (“City”) Department of Public Works Water Resources Division’s (“WRD”) sewer collection system is comprised of piping networks that are designed to convey both sanitary and storm flows to the three (3) wastewater treatment facilities throughout the City; Main Plant, East Plant and North Plant. The collection system is also equipped with five (5) combined sewer overflows (CSOs) that act as “relief” points that aid in preventing damage to the treatment facilities and in the prevention of sewage backups into residences and businesses during wet weather events. To aid in the mitigation of the contributing impervious areas, the City utilizes Green Stormwater Infrastructure (“GSI”) to reduce the polluted runoff and high storm flows from developed lands that drain into the Combined Sewer System (“CSS”) throughout the City. These systems remove stormwater from the combined sewer collection system and infiltrate back into the groundwater. These practices allow for additional capacity in the combined sewer systems to allow the treatment plants to process more sewage during wet weather events.

The North Avenue Stormwater Improvements project will install stormwater infiltration chambers that will divert stormwater from the combined collection system into the chambers to infiltrate into the groundwater. This practice is designed to remove stormwater from approximately 1.6 acres of impervious surface. The project is planning to be constructed utilizing portions of the American Rescue Plan Act (ARPA) funds that the City was awarded in 2023 which is required to be spent by September 2026.

All federally funded projects are required to comply with National Environmental Policy Act (NEPA). NEPA investigates various sources and categories to determine impacts the proposed project may have on those resources. An environmental report is prepared to assess these impacts and identify areas where mitigation measures may need to be made to the project. The State reviews this environmental report and issues their findings. This project will be issued a Finding of No Significant Impact (FONSI) due to the infiltration of water into the groundwater, which

concludes that there are no environmental impacts projects to occur as a result of the implementation of the project. The States FONSI determination dictates that the City hold a Public Hearing to provide information to the public on the project for public comment period. Following the completion of the comment period, the State will issue the final environmental review determination.

# North Avenue Stormwater Improvements Project

Burlington Department of Public Work – Water Resources



**Environmental Review**  
Public Hearing  
May 20, 2026



# Purpose



**All federally funded projects are required to comply with National Environmental Policy Act (NEPA)**

**State Water Investment Division (WID) evaluate information submitted in the Environmental Information Document (EID) and issue a determination**

**Project funding to be from the Vermont American Rescue Plan Act (ARPA) to help mitigate Combined Sewer Overflow's (CSO)**

# Environmental Information Document

Below is the list of sections that will be completed in order to submit the Environmental Informational Document

- **Environmental Justice Consideration**
- **Cultural, Historic and Archaeological Resources**
- **Land Use**
- **Intergovernmental Review of Federal Programs**
- **Wetland, Floodplains, coastal zones, wild and scenic rivers**
- **Fish and wildlife, and endangered species**
- **Drinking water and Groundwater Protection**
- **Air quality, Noise and Emissions**
- **NEPA Related Considerations**

# State Environmental Review Process

Finding of No Significant Impact



# Groundwater Protection

Stormwater infiltration chambers are designed to remove sediment from the stormwater prior to infiltrating to groundwater

Project will remove stormwater from the combined sewer collection system allowing additional capacity in the collection system to convey sewer and at the treatment plant to treat

Thank you!

Questions?





## MEMORANDUM

TO: Public Works Commission

FROM: Ashley Walenty, PE Water Resources Engineer  
Megan Moir, Division Director Water Resources

CC: Chapin Spencer, DPW Director

DATE: May 20, 2026

RE: Environmental Review Public Hearing for Old North End (ONE) GSI/CSO  
Stormwater Retrofits Project

### **Introduction**

The City of Burlington (“City”) Department of Public Works Water Resources Division’s (“WRD”) sewer collection system is comprised of piping networks that are designed to convey both sanitary and storm flows to the three (3) wastewater treatment facilities throughout the City; Main Plant, East Plant and North Plant. The collection system is also equipped with five (5) combined sewer overflows (CSOs) that act as “relief” points that aid in preventing damage to the treatment facilities and in the prevention of sewage backups into residences and businesses during wet weather events. To aid in the mitigation of the contributing impervious areas, the City utilizes Green Stormwater Infrastructure (“GSI”) to reduce the polluted runoff and high storm flows from developed lands that drain into the Combined Sewer System (“CSS”) throughout the City. These systems remove stormwater from the combined sewer collection system and infiltrate back into the groundwater. These practices allow for additional capacity in the combined sewer systems to allow the treatment plants to process more sewage during wet weather events.

In 2019 WRD was awarded an approximately \$1 Million grant to design and implement GSI practices throughout the City to reduce the polluted runoff and high storm flows from developed lands that drain into the Combined Sewer System (“CSS”) throughout the City. Approximately thirteen (13) individual projects were designed utilizing this grant, of those thirteen projects all but four (4) of them were able to be constructed. The remaining four are planned to be constructed utilizing portions of the American Rescue Plan Act (ARPA) funds that the City was awarded in 2023 which is required to be spent by September 2026 and a Transportation Alternatives Program (TAP) grant.

All federally funded projects are required to comply with National Environmental Policy Act (NEPA). NEPA investigates various sources and categories to determine impacts the proposed project may have on those resources. An environmental report is prepared to assess these impacts and identify areas where mitigation measures may need to be made to the project. The State

reviews this environmental report and issues their findings. This project will be issued a Finding of No Significant Impact (FONSI), which concludes that there are no environmental impacts projects to occur as a result of the implementation of the project. The States FONSI determination dictates that the City hold a Public Hearing to provide information to the public on the project to allow for a public comment period. Following the completion of the comment period, the State will issue the final environmental review determination.

# Old North End GSI/CSO Retrofits Project

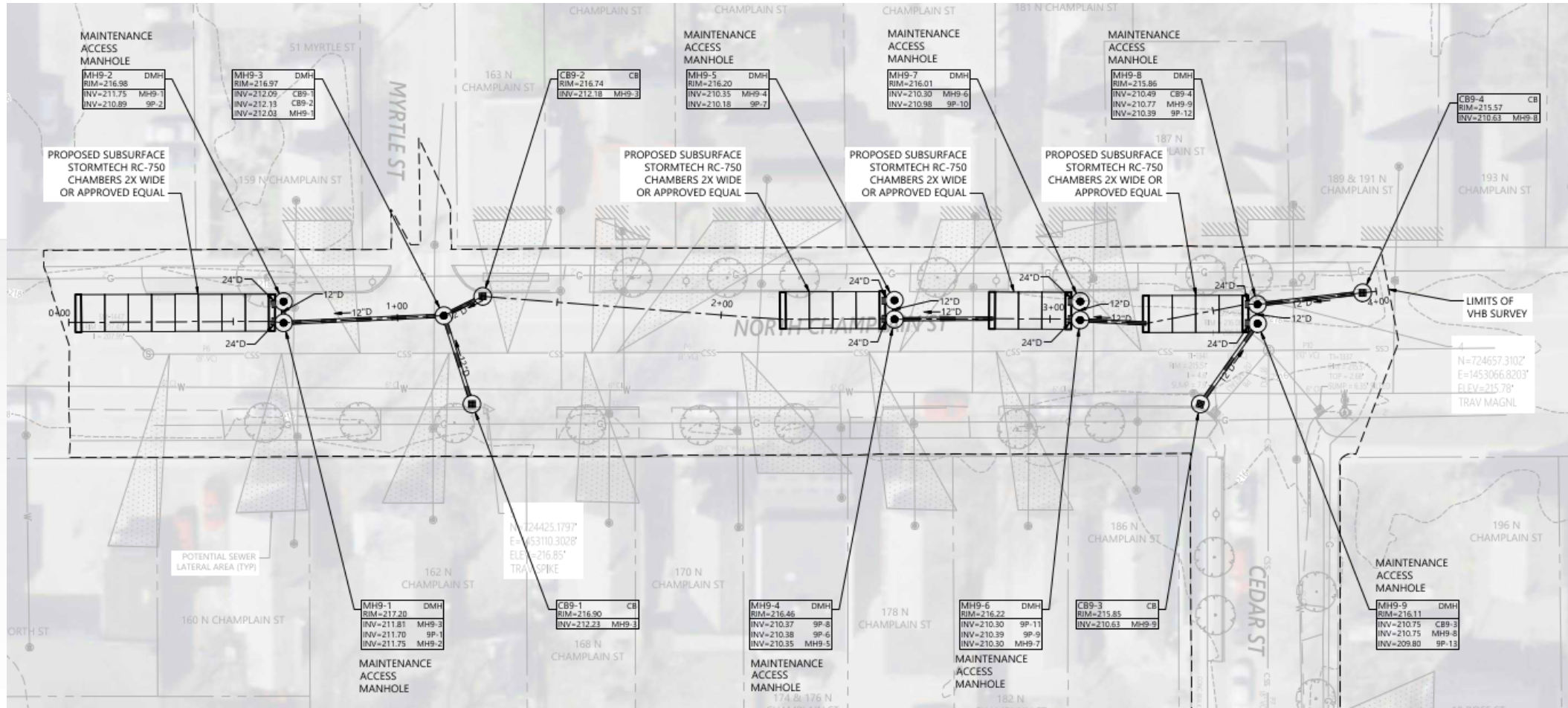
Burlington Department of Public Work – Water Resources



**Environmental Review**  
Public Hearing  
May 20, 2026

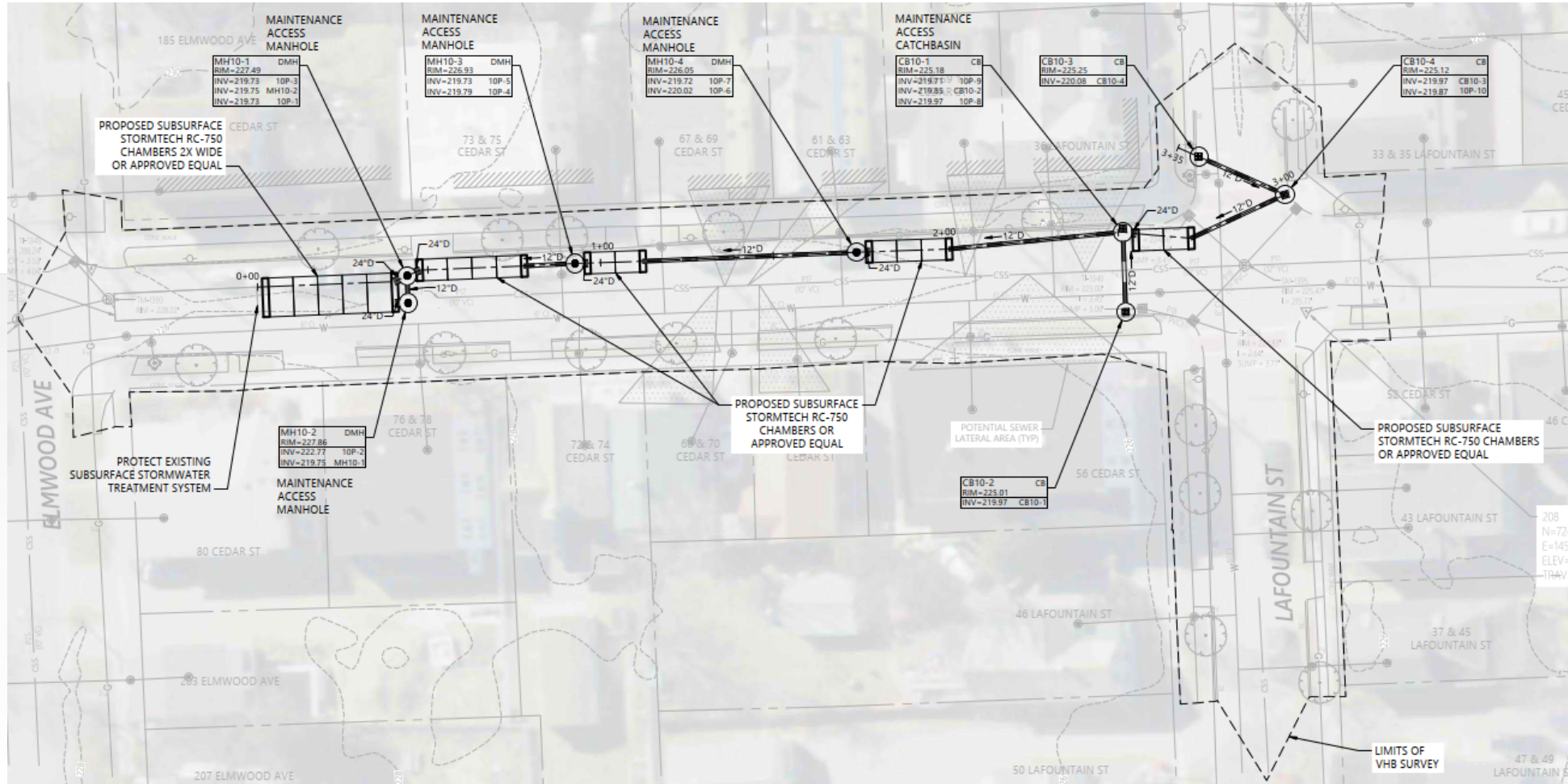
# Project 9 Description

Installation of stormwater infiltration chambers to treat and infiltrate approximately 1.918 acres of impervious surface.



# Project 10 Description

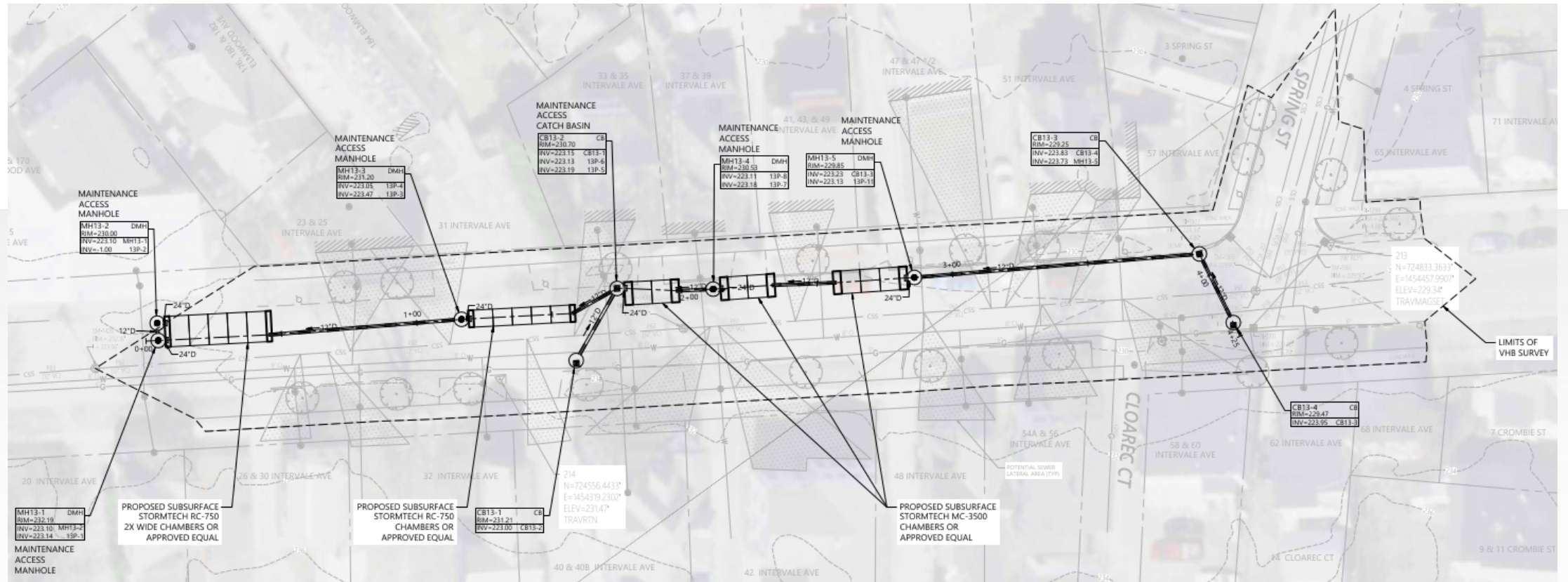
Installation of stormwater infiltration chambers to treat and infiltrate approximately 2.584 acres of impervious surface.





# Project 13 Description

Installation of stormwater infiltration chambers to treat and infiltrate approximately 2.748 acres of impervious surface.



# Purpose



All federally funded projects are required to comply with National Environmental Policy Act (NEPA)

State Water Investment Division (WID) evaluate information submitted in the Environmental Information Document (EID) and issue a determination

Projects 9, 12 & 13 funding to be from the Vermont American Rescue Plan Act (ARPA) to help mitigate Combined Sewer Overflow's (CSO)

Project 10 funding to be from TAP

# Environmental Information Document

Below is the list of sections that will be completed in order to submit the Environmental Informational Document

- **Environmental Justice Consideration**
- **Cultural, Historic and Archaeological Resources**
- **Land Use**
- **Intergovernmental Review of Federal Programs**
- **Wetland, Floodplains, coastal zones, wild and scenic rivers**
- **Fish and wildlife, and endangered species**
- **Drinking water and Groundwater Protection**
- **Air quality, Noise and Emissions**
- **NEPA Related Considerations**

# State Environmental Review Process

Finding of No Significant Impact



# Groundwater Protection

Stormwater infiltration chambers are designed to remove sediment from the stormwater prior to infiltrating to groundwater

Project will remove stormwater from the combined sewer collection system allowing additional capacity in both the collection system to convey sewer and at the treatment plant to disinfect

Thank you!

Questions?





## MEMORANDUM

TO: Public Works Commission

FROM: Ashley Walenty, PE Water Resources Engineer  
Megan Moir, Division Director Water Resources

CC: Chapin Spencer, DPW Director

DATE: May 20, 2026

RE: Environmental Review Public Hearing for Crescent Beach Pump Station and  
Forcemain Rehabilitation Project

### **Introduction**

The Crescent Beach Pump Station and Forcemain rehabilitation project consists of replacement of an existing sewage pump station and forcemain that were constructed in 1966 and has been in service for approximately 55 years. The existing wet well and dry pit station will be replaced by an submersible station within the City's right-of-way (ROW) at the end of Surf Road in Burlington. The project will also abandon an existing 6-inch diameter cast iron forcemain that runs from the pump station through approximately 9-10 private parcels and discharges to the gravity sewer collection system located beneath the Burlington Bike Path. A new 6-inch diameter fused high-density polyethylene (HDPE) pipe will be installed within the City's (ROW) along Surf Road, to Shore Road and discharge to the gravity collection system at the intersection of Shore Road and Dale Road. The City's Water Resources Division (WRD) contracted with Hoyle Tanner (HT) to complete the design work for this rehabilitation project.

This project is being funded by the Clean Water State Revolving Fund (CSWRF) and all federally funded projects are required to comply with National Environmental Policy Act (NEPA). NEPA investigates various sources and categories to determine impacts the proposed project may have on those resources. An environmental report is prepared to assess these impacts and identify areas where mitigation measures may need to be made to the project. The State reviews this environmental report and issues their findings. This project will be issued a Finding of No Significant Impact (FONSI) due to the 50-foot wetland buffer within the proposed project area. A FONSI concludes that there are no environmental impacts to occur as a result of the implementation of the project. The States FONSI determination dictates that the City hold a Public Hearing to provide information to the public on the project for a public comment period. Following the completion of the comment period, the State will issue the final environmental review determination.

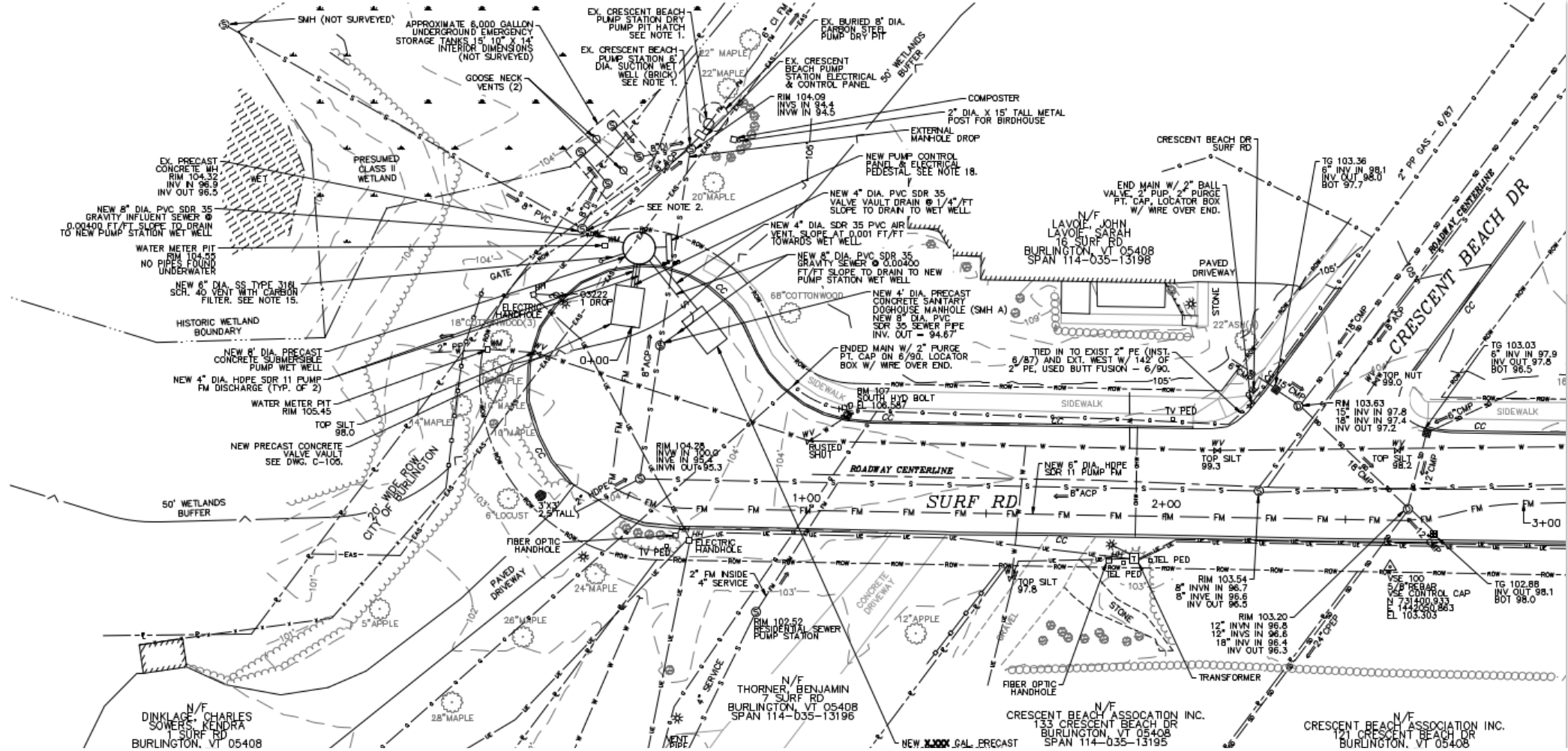
# Crescent Beach Pump Station and Forcemain Rehabilitation Project

Burlington Department of Public Work – Water Resources



**Environmental Review**  
Public Hearing  
May 20, 2026

# Crescent Beach Pump Station & Forcemain



# Purpose



**All federally funded projects are required to comply with National Environmental Policy Act (NEPA)**

**State Water Investment Division (WID) evaluate information submitted in the Environmental Information Document (EID) and issue a determination**

**Project funding to be from the Clean Water State Revolving Funds (CWSRF)**

# Environmental Information Document

Below is the list of sections that will be completed in order to submit the Environmental Informational Document

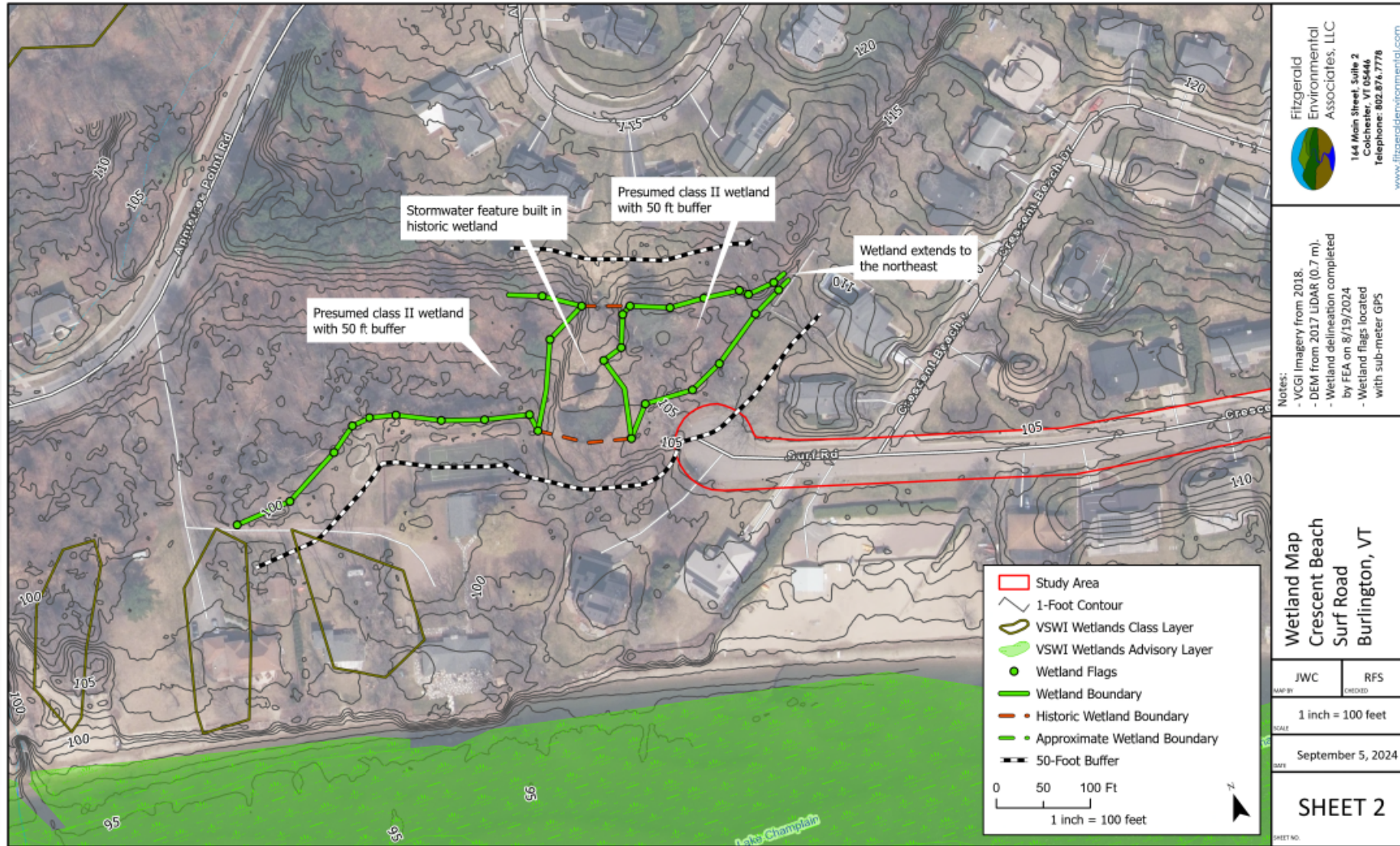
- **Environmental Justice Consideration**
- **Cultural, Historic and Archaeological Resources**
- **Land Use**
- **Intergovernmental Review of Federal Programs**
- **Wetland, Floodplains, coastal zones, wild and scenic rivers**
- **Fish and wildlife, and endangered species**
- **Drinking water and Groundwater Protection**
- **Air quality, Noise and Emissions**
- **NEPA Related Considerations**

# State Environmental Review Process

Finding of No Significant Impact



# Wetland



Thank you!

# Questions?





**CITY OF BURLINGTON  
DEPARTMENT OF PUBLIC WORKS**

645 Pine Street, Suite A  
Burlington, VT 05401  
802.863.9094 VOICE  
802.863.0466 FAX  
802.863.0450 TTY  
[www.burlingtonvt.gov/dpw](http://www.burlingtonvt.gov/dpw)

---

To: DPW Commissioners  
Fr: Chapin Spencer, Director ([cspencer@burlingtonvt.gov](mailto:cspencer@burlingtonvt.gov))  
Re: **DPW Director's Report**  
Date: May 20, 2026

**PLANBTV 2050 COMMUNITY EVENT WELL ATTENDED**

Approximately 350 residents and stakeholders attended the open house at the train station on April 30. It was a great event with lots of tables/areas for residents to provide feedback in a variety of ways. The feedback is still being compiled and will be shared when it is ready. I am very pleased with the collaboration across departments and hope this coordinated planning effort (with a plan uniting economic development, planning, parks & recreation and transportation) will enable us all to build a bold and impactful vision for Burlington's future. More info: Phillip Peterson, [ppeterson@burlingtonvt.gov](mailto:ppeterson@burlingtonvt.gov).

**CHAMPLAIN PARKWAY PROGRESS**

The Champlain Parkway project is projected to be completed on-time and on-budget. The Maple & Pine and King & Pine signals were energized on May 4. We are projecting the opening of the interstate connection sometime around late June 2026. We are planning a community celebration prior to the opening for the public to walk / run / bike on the new corridor. Stay tuned for the date and other event details. A previous City Council passed a motion a couple years ago requesting the signals in the King & Maple neighborhood run for at least 3 months prior to the interstate connection being made. Normally in projects like this, there is a 30-day testing phases before introducing a new condition. We are planning to go to the Board of Finance on May 18 and the Council on June 1 to have the Council revising its guidance to allow DPW to open the interstate connection when the project is substantially complete (late June) which would have the Maple and King signals in operation about 6 weeks prior to opening the interstate connection. More info: Corey Mims, [cmims@burlingtonvt.gov](mailto:cmims@burlingtonvt.gov).

**GREAT STREETS MAIN STREET PROGRESS**

Similarly to the Champlain Parkway, this Main Street project is projected to be completed on-time and on-budget. The most impactful remaining work is the installation of the brick crosswalks at the area of the Church and Main intersection. This work will close the Church and Main intersection during the week for the next 2-3 weeks. Remaining work includes completing sidewalks, paving, line striping and public art installation. A community celebration for this project is scheduled for July 17 & 18. More info: Maddy Suender, [msuender@burlingtonvt.gov](mailto:msuender@burlingtonvt.gov).

**NEIGHBORHOOD PLANNING ASSEMBLY TOUR**

Rob Goulding and I have been attending all the local Neighborhood Planning Assemblies this spring to provide an overview of this season's work. Overall, it has been well received. It's been a good forum for hearing resident input on community needs. There's been interest in how we prioritize paving and sidewalk work, questions about our process around unaccepted streets, and excitement about the completion of the Champlain Parkway and Great Streets Main Street. We've attached one of the presentations for context. More info: Rob Goulding, [rgoulding@burlingtonvt.gov](mailto:rgoulding@burlingtonvt.gov).

## **UPCOMING SPECIAL COUNCIL MTGS FOR UPCOMING PROJECTS**

As we complete the Champlain Parkway and Great Streets Main Street projects, we are entering important phases for upcoming projects – the Winooski Bridge and COBRI intersection and Reconnecting Bank & Cherry Streets. Both of these projects are in the Right-Of-Way phase and have special Council meetings to consider necessity and compensation for property rights that need to be acquired. Here are the upcoming meeting dates:

- Winooski Bridge and COBRI Intersection: May 21 site visit and hearings
- Cherry Street: June 22 site visit and hearings

More info: Maddy Suender, [msuender@burlingtonvt.gov](mailto:msuender@burlingtonvt.gov) and Julia Ursaki, [jursaki@burlingtonvt.gov](mailto:jursaki@burlingtonvt.gov).

Reach out with any questions. See you all on Wednesday.