

Meeting Agenda

Ward 2 Neighborhood Planning Assembly (NPA)

Jan. 8th, 2026 | 6:30-8:30pm | All are welcome



Join in person:

ONE Community Center, 20 Allen Street

Join remotely:

<https://zoom.us/j/93179389982>

O.N.E. Community Dinner

5:30-6:30pm | Free | Donations welcome

Menu: Middle Eastern-themed meal with Kofte-inspired Savory Strata, Armenian Green Beans, Lebanese Slaw, and Apricot Perok Cake

Music: TBA

Facilitator: Lauren Ebersol

Notetaker: Kason Hudman

6:30 pm Introduction

5 min Review and adopt/approve the agenda and previous minutes; introductions as time allows.

6:35 pm Public Forum (2 minutes max per person)

10 min Please state your full name, pronouns, street, and ward, and follow the NPA ground rules.

6:45 pm Traffic Calming Project

20 min *Parsa Pezeshknejad, Transportation Engineer with Burlington DPW*

Listen to a presentation regarding traffic calmers on Elmwood and Intervale Avenues with time for comments and questions.

7:05 pm Burlington School District

60 min *Jeannie Waltz, Polly Vanderputten, Tom Flanagan*

Hear from your School Commissioners and the Superintendent about the upcoming school year and budget with time for questions.

8:05 pm Updates from City Councilors

20 min *Melo Grant, Central District City Councilor*

Gene Bergman, Ward 2 City Councilor

8:25 pm Door prize drawing + Adjourn!

Our next meeting is Thursday, Jan. 8!

Scan the QR code ([or click here](#)) to: [Email us](#) • Go to [our website](#) • Watch meeting recordings on [CCTV's website](#) • Connect with us on [Instagram](#) • Request a time slot with the [request form](#) • Get to all links related to this meeting



Appendix to the Agenda

Ward 2 NPA Steering Committee

To contact the entire Ward 2 NPA Steering Committee, email ward2npa@googlegroups.com

Name	Email	Joined	Term expiration
Lauren Ebersol	lebersol27@gmail.com	2023	2027
Kason Hudson	kasonhudman@gmail.com	2024	2028
Charlie Giannoni	charliecpg@gmail.com	2024	2028
Marc Stannard	Marc.Stannard@outlook.com	2024	2028
Nora Aronds	noraaronds@yahoo.com	2025	2029
Grace Sherwood	Gsherwood703@gmail.com	2025	2029

NPA Guiding Principles

- Operate through democratic principles and democratic procedures.
- Provide a safe and welcoming forum where residents can actively share their voices about issues that matter to them, and where they can learn from the voices of others.
- Cultivate involvement by a diverse spectrum of community members through active outreach and through eliminating barriers to participation.
- Operate in a manner that models respectful, inclusive, culturally, and economically aware practices.
- Be a fun, creative, and vital organization that provides value and benefit through the multitude of perspectives shared by those who participate.

Ward 2 NPA Ground Rules

- Meetings should have **clearly defined agenda and roles**.
- **Honor time limits:** A best effort must be made to start on time, follow the agenda, and finish on time.
- **Listen to others:** Make efforts to be an open-minded member of the group.
- **Respect the agenda and the process:** Try to remain focused on the issue at hand.
- **Share your opinion respectfully:** Speak out, but not over, others' comments.
- **Treat people how you would like to be treated:** Be respectful of everyone, including guests.

Elected officials representing Ward 2

Mayor

Mayor Emma Mulvaney-Stanak	Progressive	mayor@BurlingtonVT.gov
----------------------------	-------------	------------------------

City Councilors

Central District (Wards 2 & 3)	Melo Grant	Progressive	megrant@burlingtonvt.gov	802-310-0962
Ward 2	Gene Bergman	Progressive	gbergman@burlingtonvt.gov	802-598-3602

School Board Members

Central District (Wards 2 & 3)	Jean Waltz	jwaltz@bsdvt.org	802-355-7856
Ward 2	Polly Vanderputten	pvanderputten@bsdvt.org	802-578-8653

Vermont State House Representatives

Chittenden-15	Troy Headrick	Independent	theadrick@leg.state.vt.us	(802) 828-2228
Chittenden-15	Brian Cina	Progressive/Democrat	bcina@leg.state.vt.us	(802) 828-2228
Chittenden-16	Kate Logan	Progressive/Democrat	klogan@leg.state.vt.us	(802) 828-2228
Chittenden-16	Jill Krowinski	Democrat	jkrowinski@leg.state.vt.us	(802) 828-2228
Chittenden-17	Abigail Duke	Democrat	aduke@leg.state.vt.us	(802) 828-2228

Vermont State Senators

Chittenden-Central	Tanya Vyhovsky	Progressive/Democrat	tvyhovsky@leg.state.vt.us	(802) 828-2228
Chittenden-Central	Martine Gulick	Democrat	mgulick@leg.state.vt.us	(802) 828-2228
Chittenden-Central	Philip Baruth	Democrat/Progressive	pbaruth@leg.state.vt.us	(802) 503-5266

Elmwood and Intervale Traffic calming

Jan 8th 2026

Ward2 NPA meeting



Where?



Why are we doing this ?

- Speeding
- Crashes

Elmwood

Metric	Observed	TCM Threshold
85th Percentile Speed	26 mph	> 25 mph
Daily Traffic Volume	2,200	> 1,500 vehicles/day
Bike Volume	470	> 250 bikes/day
Crash History	22 (all time), 5 injury, 4 bike crashes	> 5 crashes in 3 years

Intervale Ave

Metric	Observed	TCM Threshold
85th Percentile Speed	27 mph	> 25 mph
Daily Traffic Volume	1100	> 1,500 vehicles/day
Bike Volume	100	> 250 bikes/day
Crash History	9 (all time), 2 injury	> 5 crashes in 3 years

Why are we doing this ?

- Speeding
- Crashes
- Requests

“Please add speed bumps to Intervale Ave. People fly down that road and it is also in need of new paving. ...”

“Traffic calming needed on Intervale Avenue.”

“Elmwood Ave has been used as a drag race strip for the past week or two by a car with a super loud muffler Are there any traffic calming efforts available to help?”

- Elmwood
 - 2 resident traffic calming requests

- Intervale:
 - 3 resident traffic calming requests

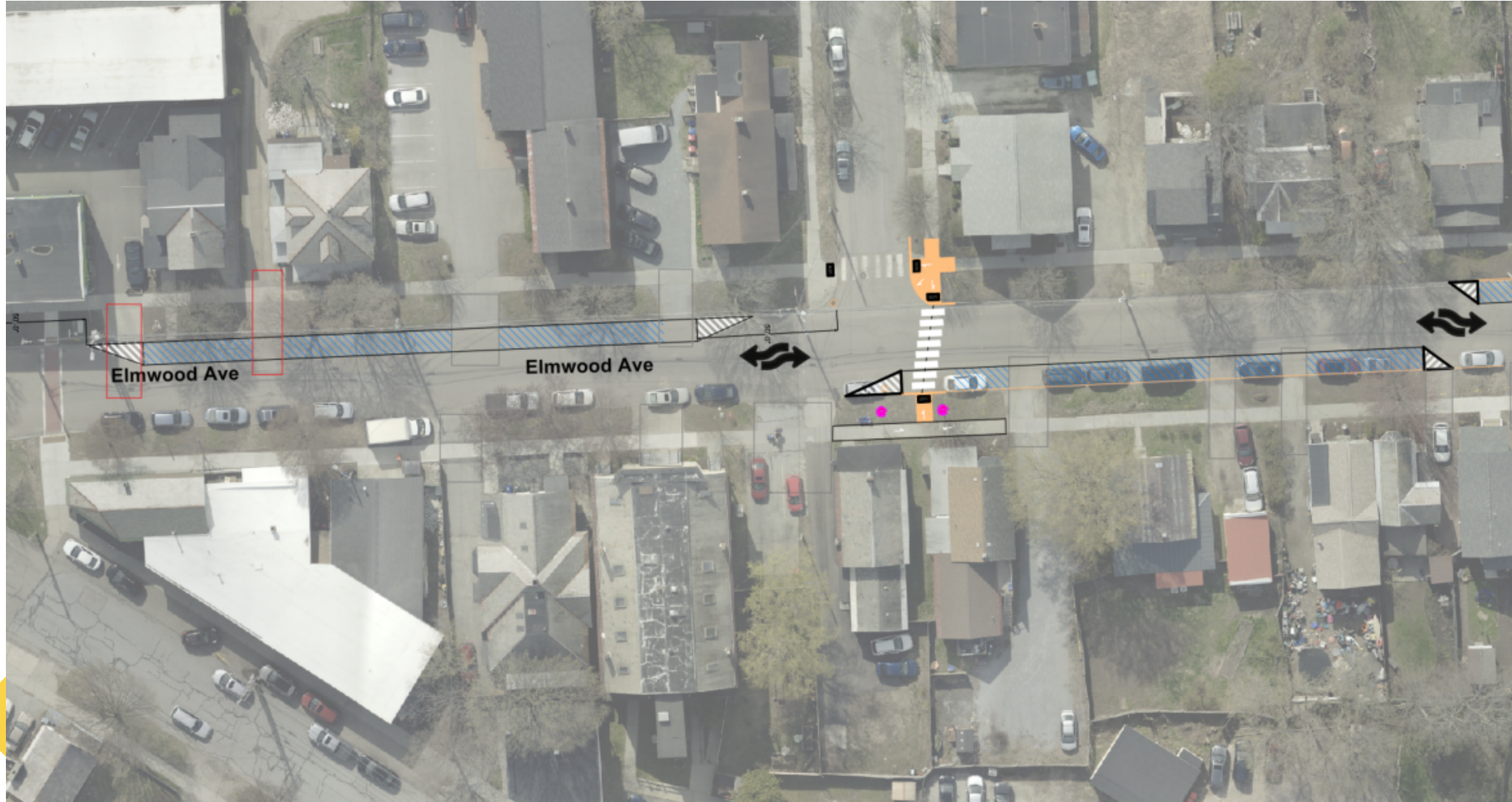
Elmwood Ave (Parking chicane)

A parking chicane uses parked cars and painted extensions to create a slight curve in the roadway, which naturally slows traffic

1 Parking space loss for chicanes and two parking spaces for crosswalk.



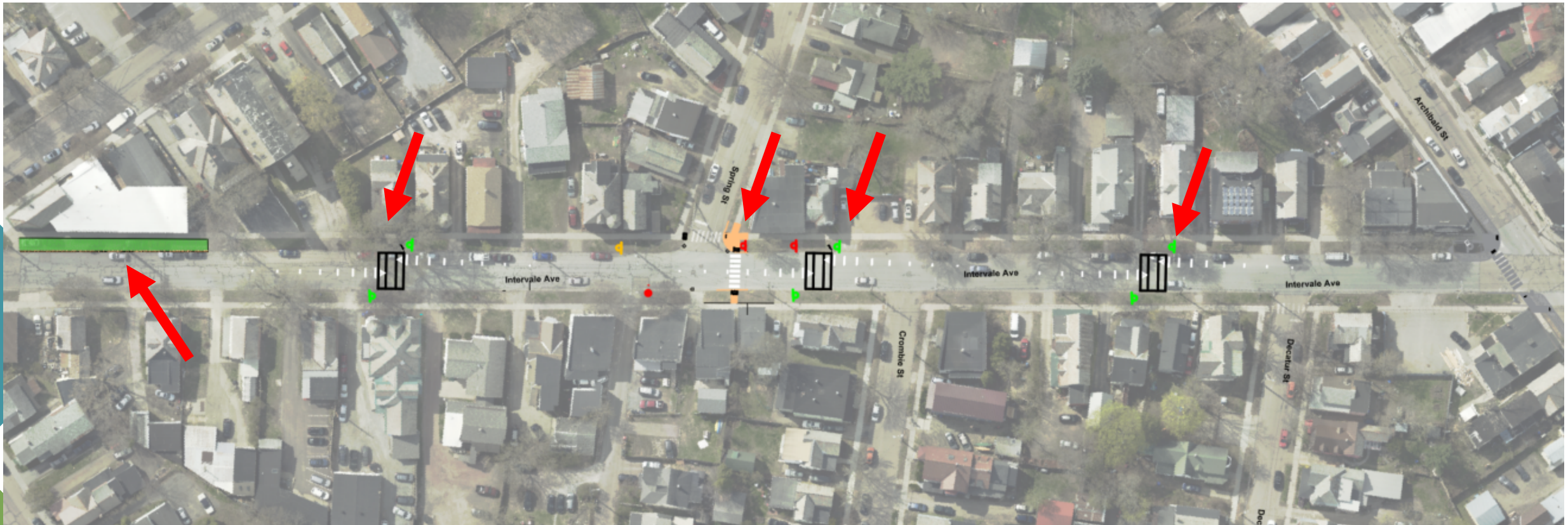
Elmwood Ave (Parking chicane)



Elmwood Ave (Parking chicane)



Intervale Ave (Speed tables)



Intervale Ave (Speed tables)



Intervale Ave (Speed tables)



Net steps

- January – February: Finalize design
- March 18: Commission meeting
- Spring: Advertise bids
- Summer: Begin construction

Questions

Contact info:

Parsa Pezeshknejad, Ph.D., Project manager

ppezeshknejad@burlingtonvt.gov

802-734-2208

Phillip Peterson, PE, Senior Transportation Engineer & Planner

ppeterson@burlingtonvt.gov



NPA Budget Update

January 8 2025



Budgetary Assumptions

Full list of assumptions posted on budget website

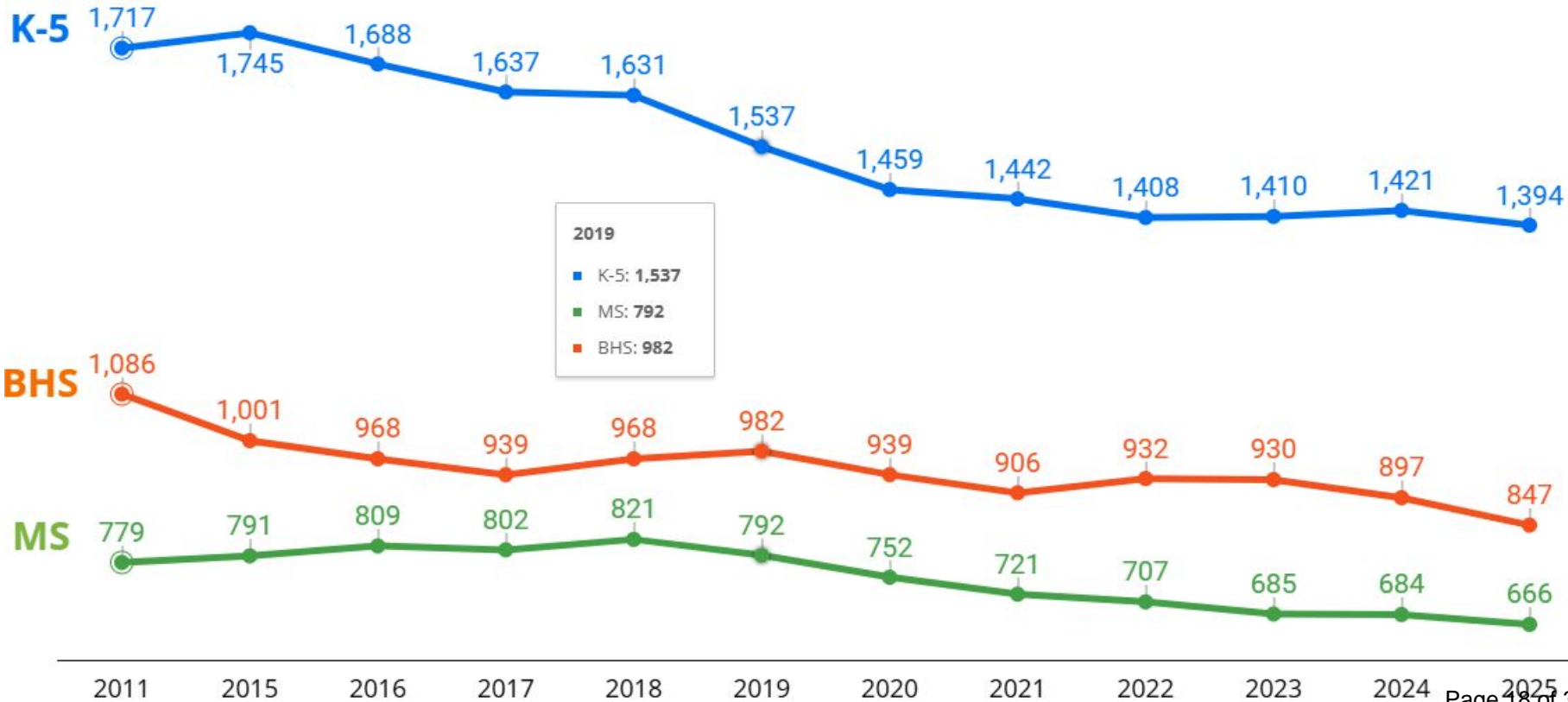
Level Services Budget

- To maintain the current level of services, the overall budget would need to increase by about 5%.
 - ***The General Fund budget would need to increase about 6%, but the initial tax impact will not be available until after Dec 1.***

Major Drivers

- Wages: 5% increase based on pattern of settled bargaining agreements.
- Benefits: 8% increase in health insurance premiums.
- Debt Service: 6.6% the last major increase associated with BHS/BTC.
- Federal funding: \$2m of program costs in excess of federal revenue.
- Rent: \$2m of savings associated with the end of the DtBHS lease.

BSD Enrollment History



Draft Board Guidance

- Realign staffing to reflect lower projected enrollment and ensure Act 73 class size minimums are met.
- Limit budget growth due to the impact of BHS/BTC debt service.
- Identify funding needed to support specific strategic plan activities.
- Continue to offer academically rigorous programming for all learners that leads to improved student outcomes.
- Present the Board with at least three budget scenarios reflecting different tax impacts due to uncertainty in federal and state funding.



3.2% Decline in Enrollment from Last Year

- Declining school-aged population in Burlington (as well as the county and state).
 - Housing appears to be the most significant obstacle.
- Substantial decrease in the number of refugees being resettled in Burlington (and across the country).
- Neither private school enrollment nor school choice are having a meaningful impact on enrollment.

Areas of Potential Reductions

- Enrollment driven adjustments based on Equitable Budgeting Model
 - 4.5 FTE teachers
- Superintendent is recommending reductions to projected Central Office budgets (third consecutive year)
- Superintendent established a work group to brainstorm additional reduction ideas to consider, based on tax landscape and board guidance.

RISE Allocation

Nearly \$1.6m of School-directed, Equity-oriented Investments

- RISE allocations decrease by about \$50,000 district based on reduced enrollment.
- Improve enrollment data also contributed to the reduction.

FY25 Audit and Fund Balance

FY25 Audit is in final phase of review

FY25 Audited Fund Balance

- Approximately \$2,400,000 available to support FY25 budget.
 - This surplus is in line with prior year results.
- Represents roughly 2% of the total budget.

Fund Balance is One Time Revenue

- Careful budget management should result in annual surpluses.
- Currently supports significant costs associated with rent for temporary spaces (DtBHS, BTC, etc.).

Level Services Budget Summary

5.6% tax rate increase (current level-service) includes:

- 5% state buydown of tax rates (without which, the tax impact would be 10.6%)
- \$500k 4.5 FTE's and \$50k District Office reductions
- \$1m DTBHS Rent Savings
- \$450K savings from reduced bond borrowing

Scenario Overviews

Area	Scenario 1 5.6% tax increase with buydown	Scenario 2 4.6% tax increase with buydown	Scenario 3 0% tax increase with buydown
<i>Additional Savings Target</i>	<i>Level-service</i>	<i>\$1.25 million</i>	<i>\$5.5 million</i>
Direct Instruction - Teachers	4.5 FTE	6.5 FTE	12 FTE
School Support Staff - Other Educators on Teacher and Para Contracts	0 FTE	0.0 FTE	9.5 FTE
District Services/Admin	0 FTE	3.5 FTE	4.0 FTE
Other reductions	\$1.5m	\$1.75m	Close a school

Next Steps

- The Superintendent will present a recommendation to the full school board on January 14. The school board will vote on the budget recommendation on January 20.

Budget Development Timeline

- 1/14** School Board meeting
- 1/20** School Board meeting
- 3/3** Town Meeting Day budget vote

Subject to change

Full budget timeline available at:

<http://www.bsdt.org/district/budget/>



Appendix

The following slides are provided for reference.

Equitable Budgeting

A Brief History

- Research-based model created with input from the community.
- Overwhelming support for allocating resources to the students who need them most.
- Provides a foundational level of support plus RISE funds for investments unique to each school community.
- Recognize that our staffing level must be responsive to enrollment changes.

Community Survey: Who did we hear from?

We heard from...

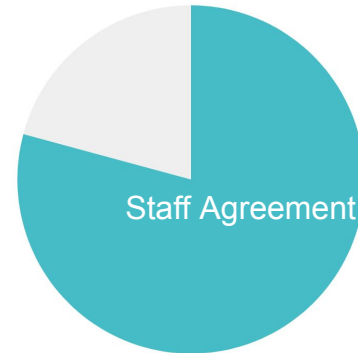
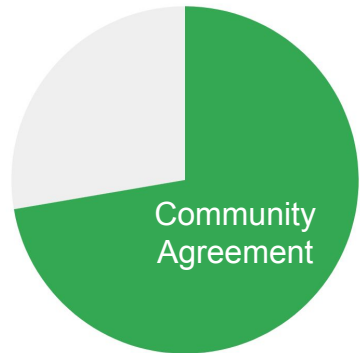
- 450+ students, family members, staff, and community members
- Individuals affiliated with every BSD school and program
- 43.2% of respondents' students receive free or reduced lunch
- 21.7% of respondents' students receive special education services
- 20.9% of our respondents self identified as BIPOC
- 14.4% of respondents speak a language other than English in their home



2020 Community Survey: What did we say?

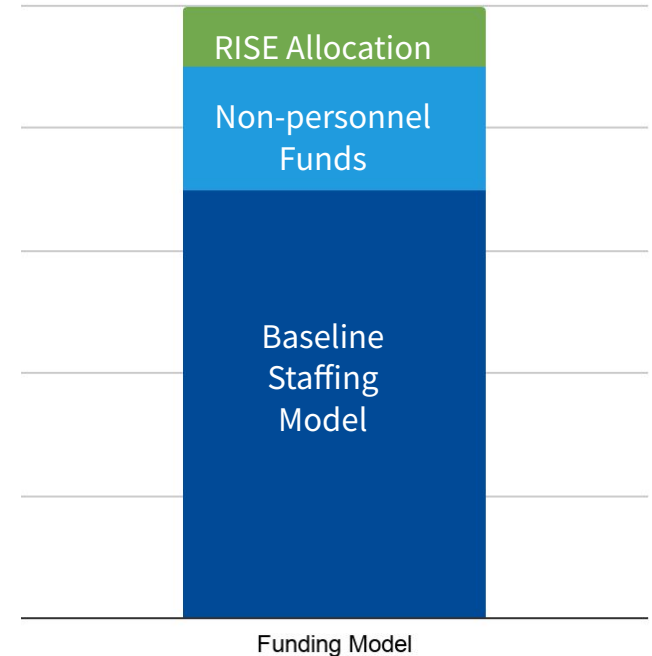
*72% of all respondents and 79% of BSD staff
strongly agree or agree that*

***resources should be allocated in a way that supports
the students who need them most - even if it means
reducing the resources at their school(s).***



Our proposed model has three components

- A **staffing model** will provide each school with its core staffing, using staff:student ratios (e.g. 1 counselor staff for every 200 students)
- Non-personnel funds will be allocated based on a **per-student** basis
- An Equity Allocation will provide additional funding using a **weighted student formula**, meaning more funds in schools with greater need
 - Schools will have discretion in how best to serve their students using these funds
 - Intent and desired outcomes will be documented for future evaluation



Tax Rates

Tax rates are the result of four major inputs

- Education Spending: amount of Education Fund support a district's budget requires - something a district controls!
- Long Term Weighted Average Daily Membership: enrollment that weighs factors such as poverty and English Learners.
- Dollar Yield: a state variable reflecting the amount of money in the education fund. Now adjusted by the statewide CLA.
- Common Level of Appraisal (CLA): a measure of property values in each community, adjusted by the statewide CLA.