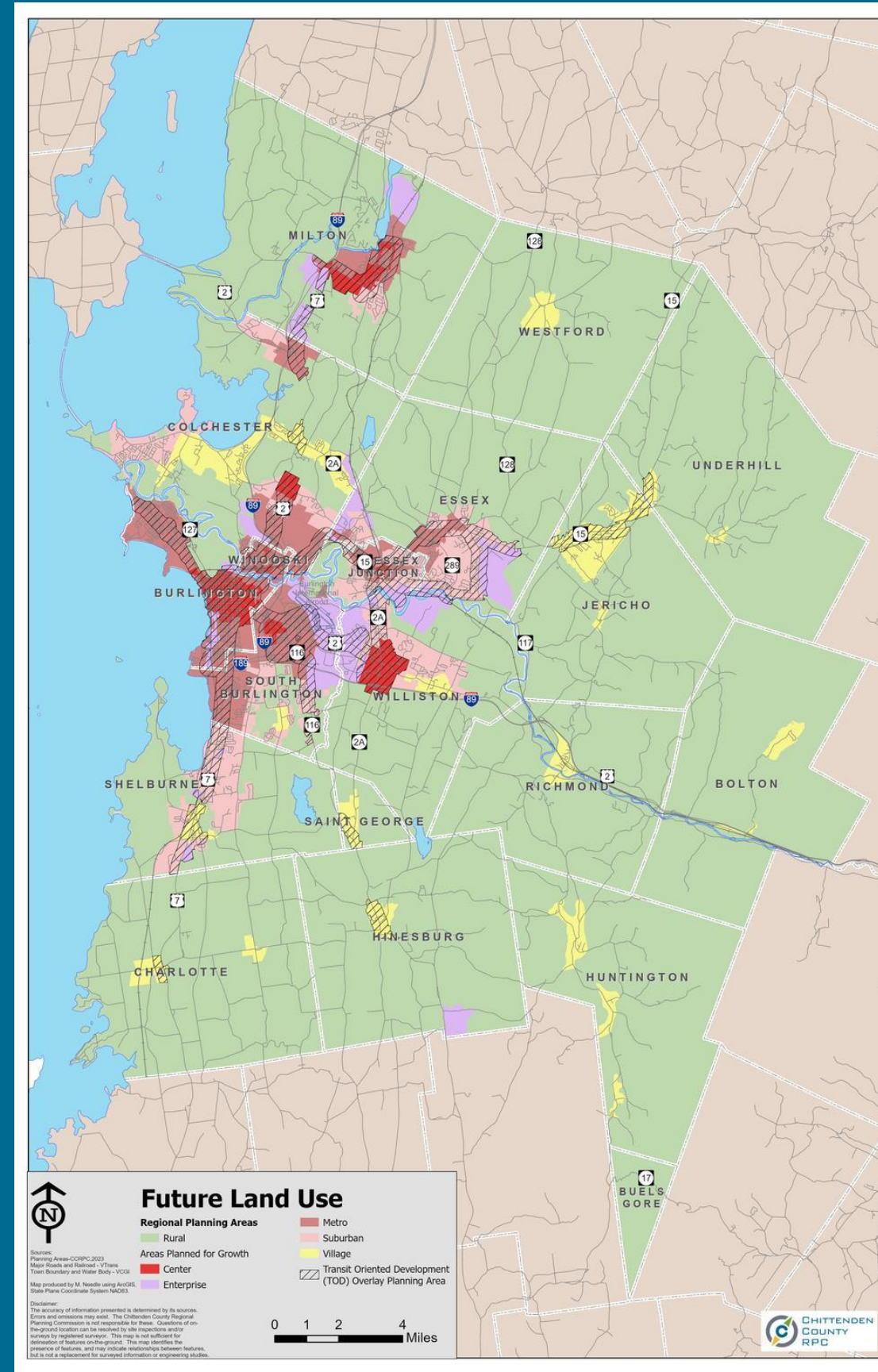


Group Agreements



- Respect and accept diversity in ability, culture, and perspectives.
- Engage in respectful dialogue.
- Work towards a clear mission, goals, and objectives.
- Keep personal stories and experiences confidential.
- Make space for everyone to participate

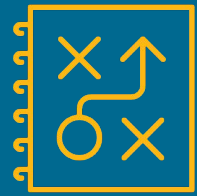


What does the Chittenden County Regional Planning Commission (CCRPC) do?



CCRPC works with the cities and towns in Chittenden County to make informed decisions about how to use and develop land, infrastructure, and regional resources.

What does that mean?



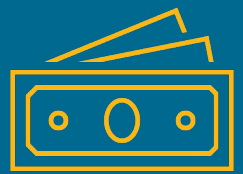
Authors regional plans to guide the development of the county.



Supports cities and towns in implementing local plans through project support.



Works with the State of Vermont to implement policies at the local level.



Acts as a pass-through for both federal and state funding. **For projects to be funded through CCRPC, they need to align with the regional plan (what we want to talk about today)!

ECOS Plan Structure

- 20 Chapters with 17 Goals
- Goals for the following topics:

Ecological Systems

Watershed Health

Working Lands

Energy

Transportation

Housing

Health

Land Use

Economy

Household Finance

Emergency Management

Infrastructure & Facilities

Arts and Culture

Scenic, Recreational, & Historic
Resources

Civic Engagement

Social Connectedness

Planning Practices

Why are Regional Plans Important?

The Regional Plan is a document that sets a vision for the future of development in Chittenden County (it is required by the State of Vermont).



Reflects and address community concerns and hopes



Ensures Coordination Between Municipalities & State Agencies



Informs funding decisions to implement goals.

Supplemental Plans



1. Metropolitan Transportation Plan (MTP)

1. Transportation Improvement Plan (TIP)
2. Active Transportation Plan
3. Park & Ride Plan

2. Comprehensive Economic Development Strategy (CEDS)

3. Regional All-Hazards Mitigation Plan (AHMP)

4. Enhanced Energy Plan (EEP)

5. Equitable Planning Practices

Community Engagement & Why



Today, we are looking longer term- to plan for the next 8 years strategically. **All input gathered today will influence goals and actions** in the Regional Plan and help to shape the future.

Today's Small Group Discussion Priorities



Economy &
Household Finance



Civic Engagement & Social
Connectedness

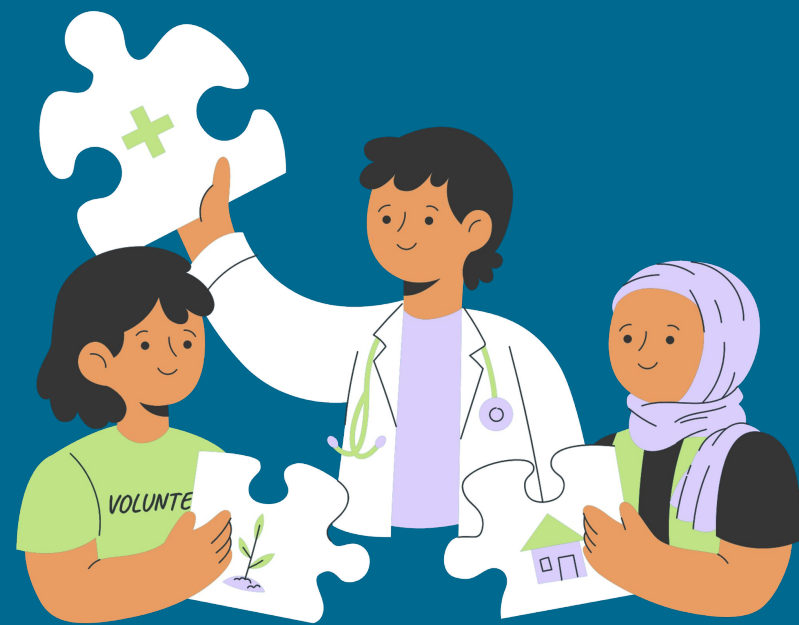


Housing & Health



Other!

Group Discussion



Please Share 1-3 topics, issues, or insights discussed in your small group!

THANK YOU!

